





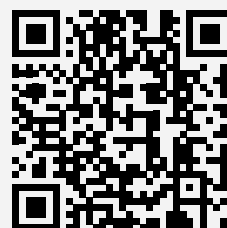
LIVELINK RETAIL

THE MAXIMUM FREEDOM OF SMART LIGHT CONTROL

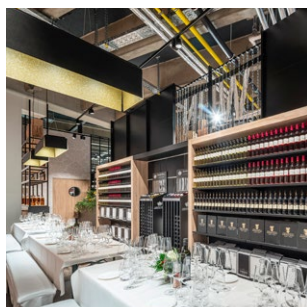
Window display or the complete store? New installation or refurbishment? LIVELINK RETAIL brings a new freedom and flexibility to intelligent store lighting: the light management system based on Bluetooth technology makes your light future-proof with minimal effort, regardless of the status of the building technology. This saves time, money and energy.

- 
Maximum freedom
 Use of the existing electrical infrastructure. No control line required thanks to Bluetooth wireless technology.
- 
Scalable
 From a small promotion area or window display to the complete store.
- 
Sustainable and efficient
 Reduce energy consumption with intelligent luminaires and automated control.
- 
Smart
 Integration of Human Centric Lighting and IoT components possible.

Find more information here:



oktalite.com/en/led-iq





YOUR BENEFITS. READY FOR USE IMMEDIATELY.

LIVELINK RETAIL does not require a separate line to control best light with high precision. You use your digital lighting assistant conveniently via smartphone or tablet. Light scenes are easily called up and luminaires individually adjusted via app or push-button. Colours, intensity, animation and the timer can be selected intuitively. HCL and other IoT components can be integrated. Your advantage: appropriate luminaires and accessories require no additional hardware and are ready for immediate use.

LIVELINK RETAIL – maximum freedom to efficiently and sustainably control light in the retail sector.



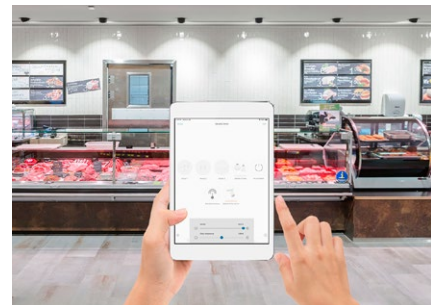
Store operators

- Simply modernise and flexibly expand
- No «technical know-how» needed
- Reduce energy consumption
- Use rooms multi-functionally by means of scenes and sensors
- Use of the existing electrical infrastructure; no control line required



Commissioners

- Intuitive commissioning, programming and control via the LiveLink Retail app
- Locate and assign luminaires wirelessly and simply
- Adapt and scale the system quickly



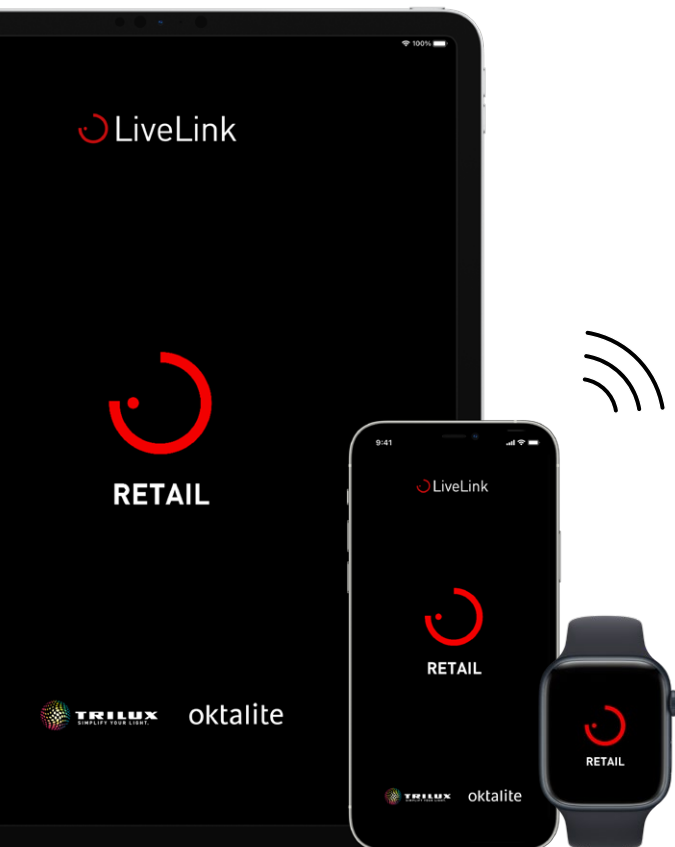
Users

- Individual operation of luminaires
- Simple visual luminaire selection
- Intuitively adjust light colour and intensity
- Enjoy full automation, sit back and relax

FUNCTIONS THAT INSPIRE

LIVELINK RETAIL scores with a wide range of smart functions that open up unimagined possibilities for displaying scenes and controlling with light.

- ✓ **Dynamic animation**
Attract attention with scene sequences
- ✓ **Dynamic light scenes**
With daylight-dependent, dynamic control
- ✓ **Flexible adjustment**
Adjust scenes and luminaires across areas
- ✓ **Calendar / timer function**
Plan e.g. Sundays open for business
- ✓ **Display sales highlights**
Specifically highlight special areas
- ✓ **Switching and dimming (1-100%)**
Flexibly display retail spaces and surfaces in real time
- ✓ **Event light**
Atmospheric light in white, active or RGB(W) for events
- ✓ **Remote maintenance**
Expert help from afar, anytime and anywhere
- ✓ **250 luminaires / BLE system**
Interconnect up to 8 networks
- ✓ **Efficient general light**
Saves energy if little light is needed
- ✓ **Interaction through sensor technology**
Movement / brightness control and full automation



Available for free for Tablet, Smartphone, Smartwatch.

Okталite Lichttechnik GmbH
Mathias-Brüggen-Straße 73
50829 Cologne, Germany
T +49 221 59767-0
F +49 221 59767-40
mail@oktalite.com
www.oktalite.com