



oktalite

MEMBER OF



TRILUX
SIMPLIFY YOUR LIGHT.

YUVIO

CREATES RETAIL EXPERIENCES.

YUVIO INDIVIDUAL. DIFFERENT. UNIQUE.

Customised retail lighting solutions – for today and tomorrow.

YUVIO is different: an archetypal design object with a clear and recognisable shape. The housing: square, flat and elegant with precise radii at the edges. And with a special technology for light control that is visibly different.

With our passion for retail and our love of light, we create contemporary, sustainable and energy-saving solutions to make the sales areas of the various retail formats attractive and inviting.

With our focus on the individual needs of customers, our lighting solutions strike a balance between, on the one hand, the emotionality of the shopping experience, and, on the other, rationality and cost-effectiveness.

Content

Overview of the Yuvio spotlight range	04
Yuvio Track in detail	08
Yuvio Twin in detail	12
Yuvio lighting technology	16
Yuvio light colours	24
LiveLink light management	26
Yuvio product overview	28
Contact addresses	30

YUVIO UNIVERSAL AND VERSATILE.

Universally developed, with various light distribution characteristics, matched to the typical applications of a store: for nuanced lighting concepts with consistent design and quality of light.

Standard colours



Traffic white



Deep black



Metallic grey

Minimalist: the drivers disappear almost invisibly into the track.

Versatile: choose between Yuvio Track with one light head or Yuvio Twin with two.

Brilliant: Yuvio functions with free-form lenses that combine the advantages of reflector and lens technology with striking aesthetics.

RAL special colours on request¹



Pigeon blue



Cobalt blue



Signal yellow

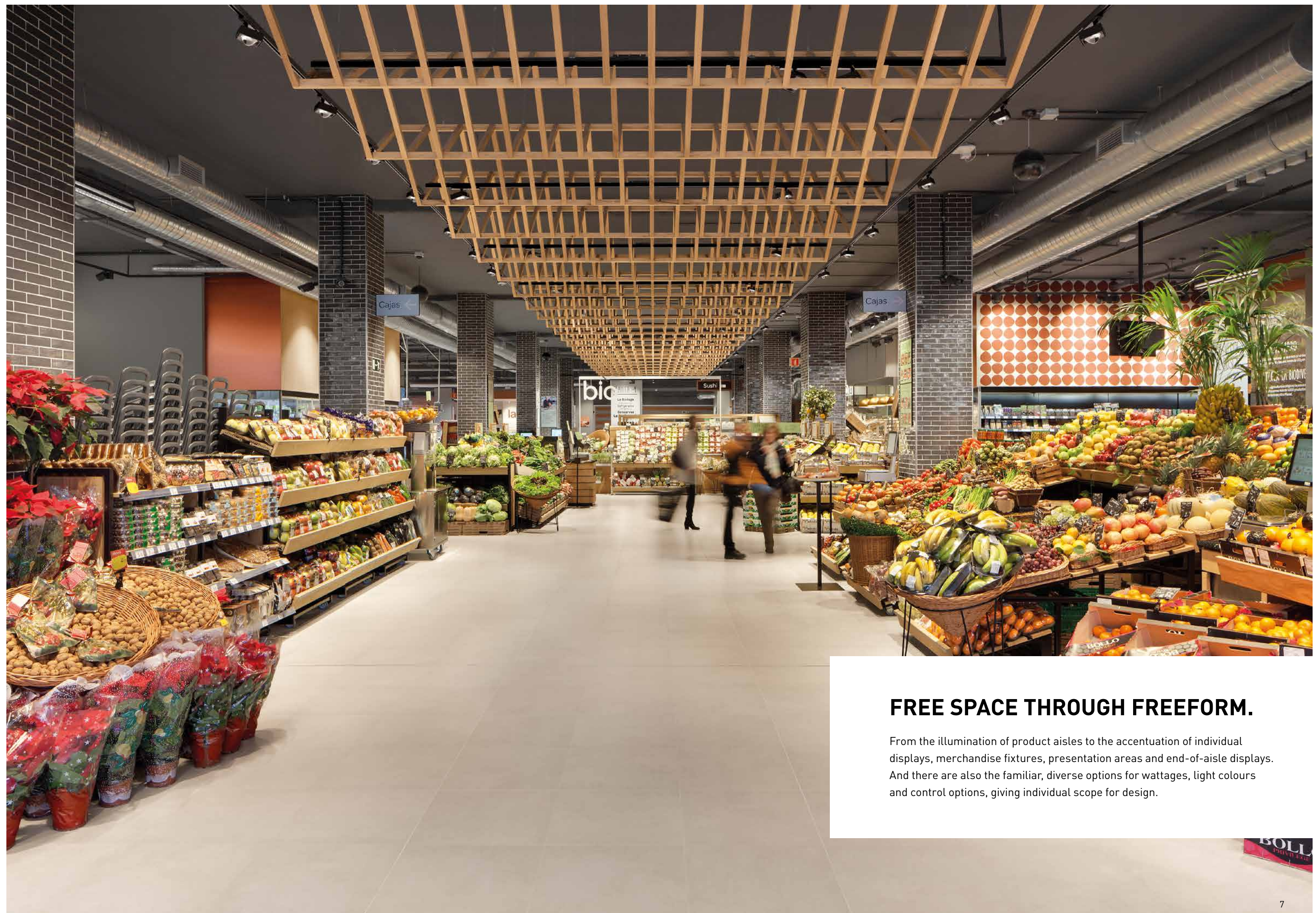


Bright ivory



Beige-grey

¹The colours shown here serve as reference for all possible RAL colours.



FREE SPACE THROUGH FREEFORM.

From the illumination of product aisles to the accentuation of individual displays, merchandise fixtures, presentation areas and end-of-aisle displays. And there are also the familiar, diverse options for wattages, light colours and control options, giving individual scope for design.

YUVIO TRACK THE UNIVERSAL SPOTLIGHT.

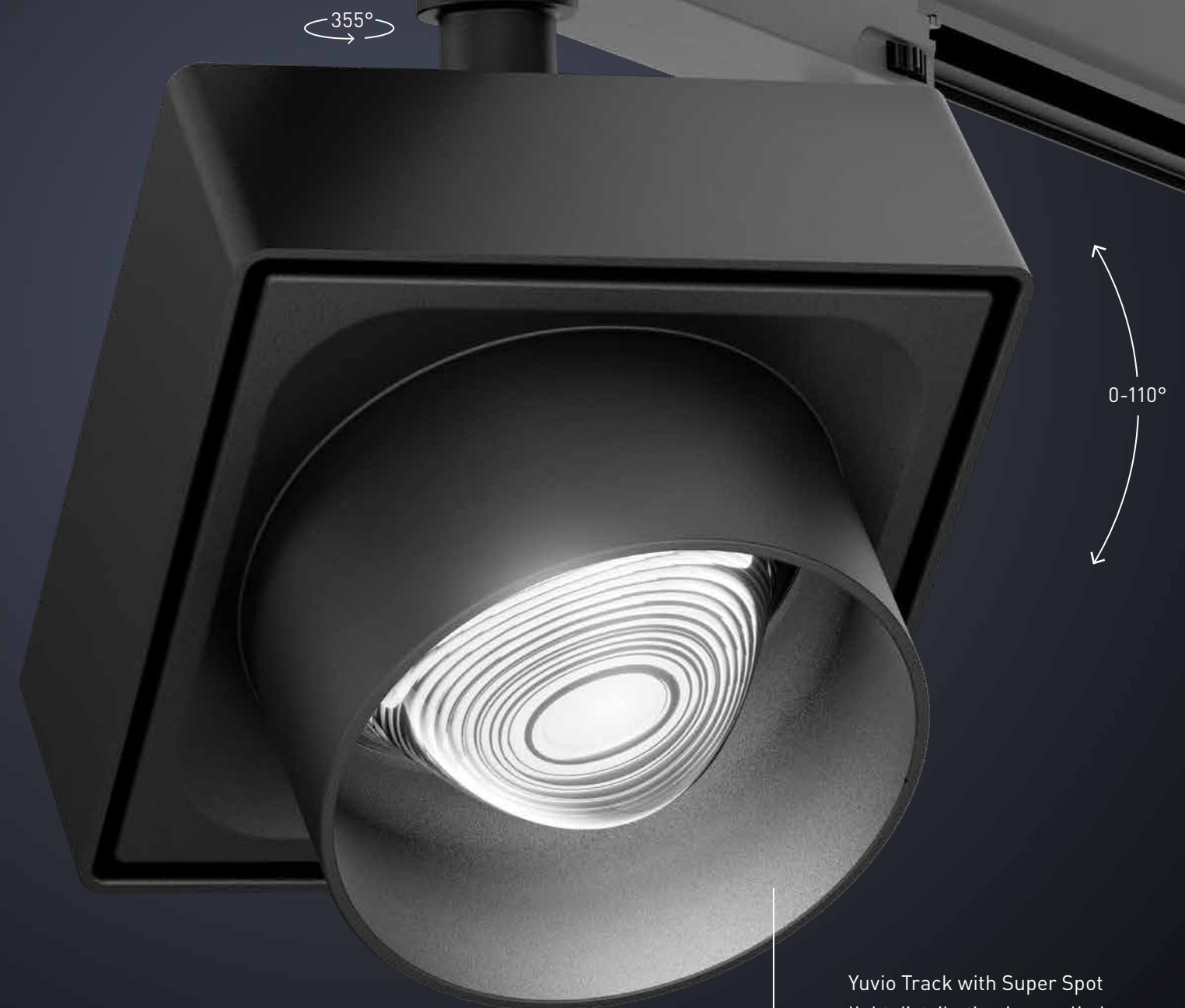
A spotlight with a strong identity – Yuvio Track is equipped with the classic, rotationally symmetric distribution characteristics from Super Spot to Flood as well as a special planar oval light distribution (34°× 78°). Also available with the full range of standard and special light colours – for the optimum balance of efficiency, colour atmosphere and colour rendering, even for specific groups of merchandise.¹

FLEXIBILITY WITHOUT LIMITS.

Yuvio Track spotlights can be rotated through 355° and swivelled from 0° to 110° – for a practical operating radius.

SMART TECHNOLOGY ACCORDING TO CHOICE.

Yuvio Track spotlights can be integrated into any smart light management system: as well as the switchable standard version, you have the option of DALI or wireless control with Bluetooth LE.²



Yuvio Track with Super Spot light distribution is supplied with a snoot. For optimum visual perception.

¹See page 24 – Yuvio light colours

²See page 26 – LiveLink light management



EFFICIENT AND IMPRESSIVE.

Thanks to the exclusive lighting technology of the concise free-form lenses, which not only provide the highest quality of light but also a diverse and unmistakable appearance. Vibrant and rich in contrast with significant accents – the right lighting tool for numerous retail formats.

YUVIO TWIN PERFECT ALIGNMENT TO THE TARGET SURFACE.

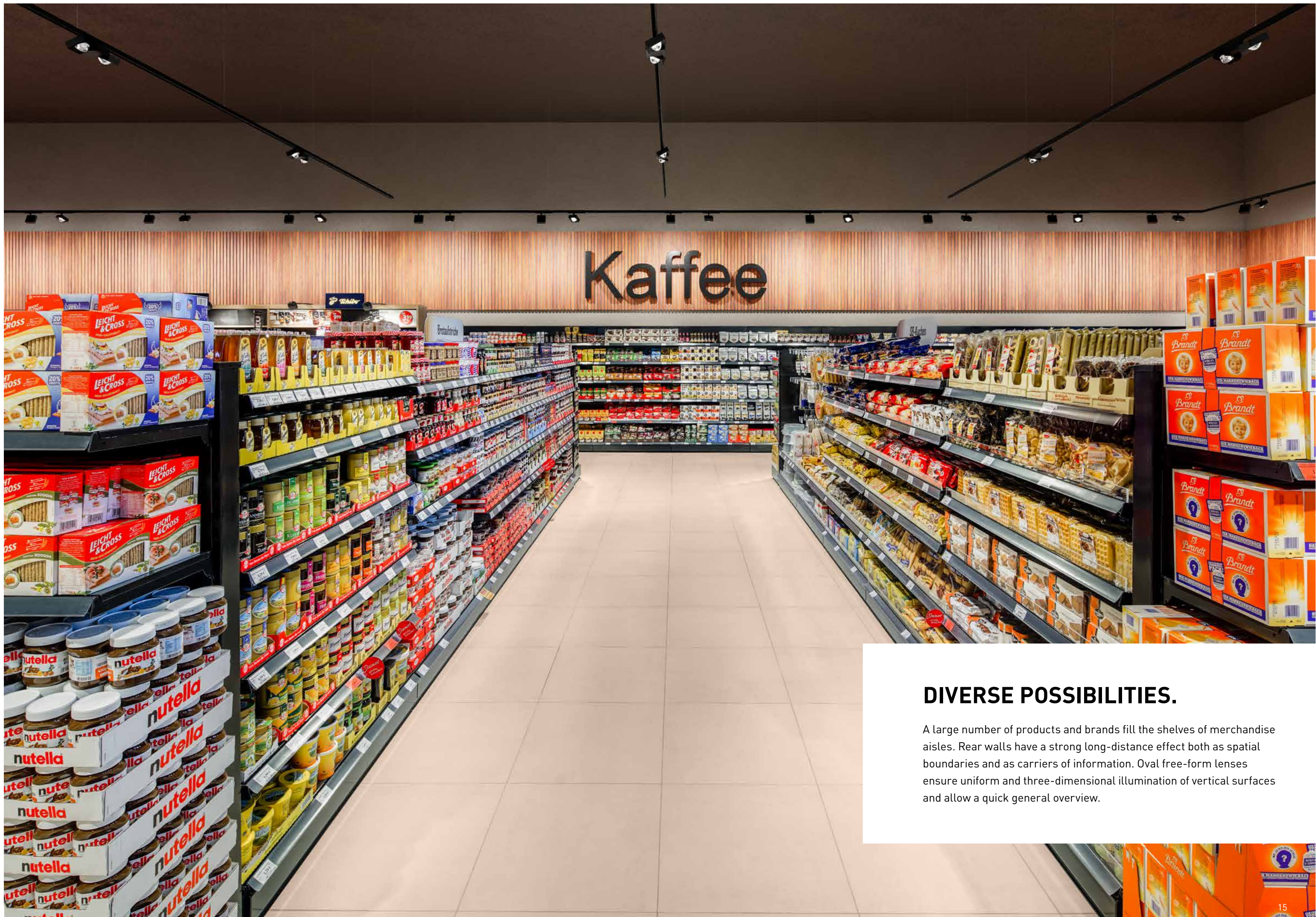
Consistent design and uniformly high quality of light in the store. Illumination not only for individual accenting but also for merchandise aisles and rear walls: this is the idea behind Yuvio Twin, the ideal complement to Yuvio Track.

Its special planar oval light distribution ($34^{\circ} \times 78^{\circ}$) is ideal for the uniform illumination of shelves and rear walls. Two spotlight heads per luminaire generate high lumen packages.

Yuvio Twin can be planned with an axis spacing of up to 3 m so that light points can be effectively saved.

A pre-attached lock on the track adapter ensures absolute parallelism to the track. When the lock is removed, Yuvio Twin can be rotated through 314° . Each light head can be swivelled 30° in both directions.





DIVERSE POSSIBILITIES.

A large number of products and brands fill the shelves of merchandise aisles. Rear walls have a strong long-distance effect both as spatial boundaries and as carriers of information. Oval free-form lenses ensure uniform and three-dimensional illumination of vertical surfaces and allow a quick general overview.

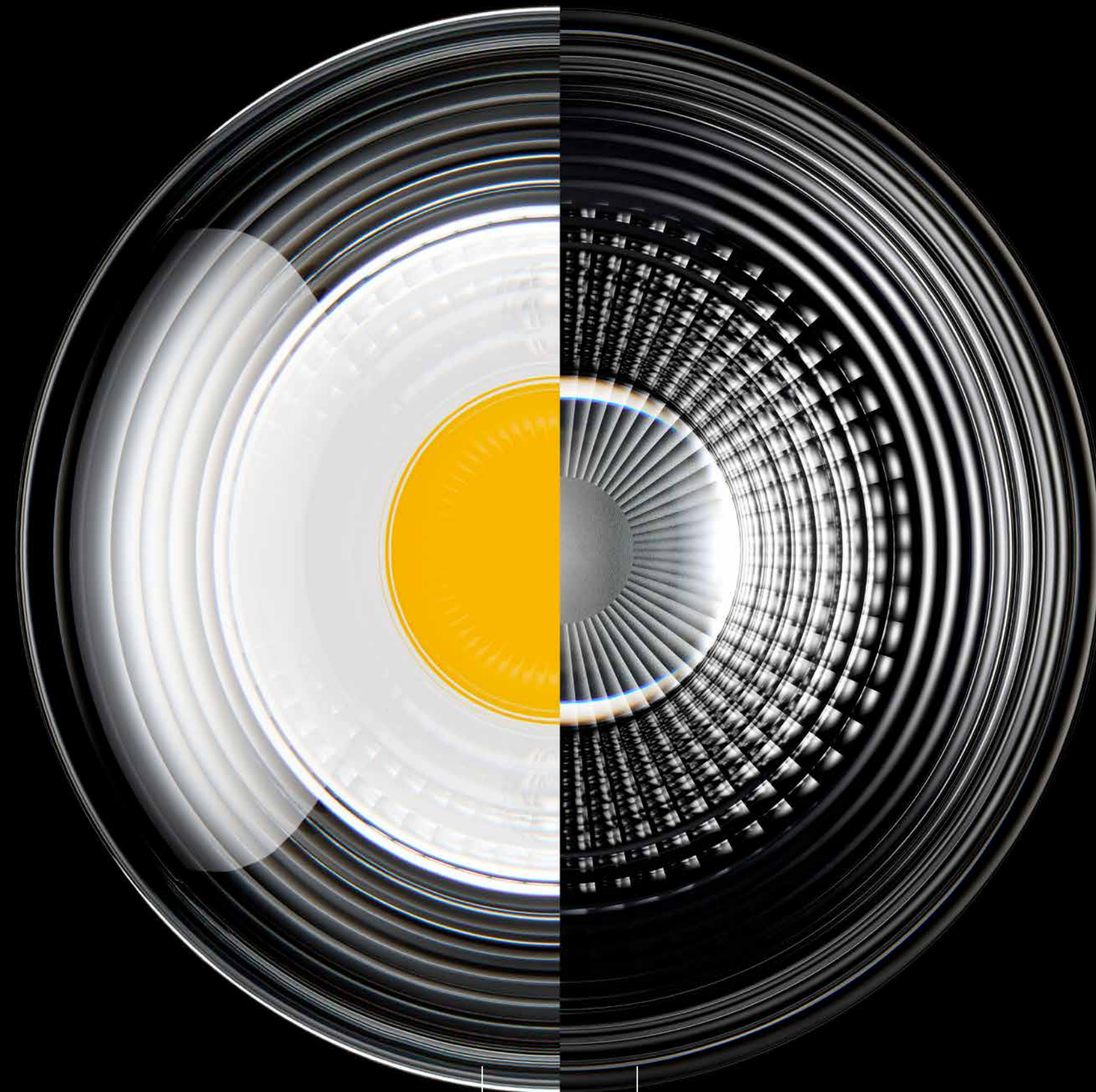
YUVIO LIGHT CONTROL.

The lighting technology of Yuvio consists of a lens optic with an applied facettet structure.

The free-form lenses made of transparent, thermoplastic material not only look different to conventional lighting technology but also feature special properties:

- ✓ High UV resistance:
no yellowing and brittling
- ✓ Robust material properties:
scratch-resistant and non-splintering
- ✓ Very high transmission factor:
light output ratio >90 %*
- ✓ Very easy to recycle:
PMMA (polymethylmethacrylate / acrylic glass)
- ✓ High quality long-distance effect:
free-form lenses as a design element

*for distribution characteristics without snoot
(used with Super Spot)



Frontal view of the
Medium Flood free-form lens

Light injection side of the
Medium Flood free-form lens

FACETTED STRUCTURE IN THE LIGHT INJECTION AREA.

The structure applied to the rear is identical in type and size for all rotationally symmetric beam angles. It runs from the position of the light injection in a star shape in grooves, facets and rings from the inside to the outside.

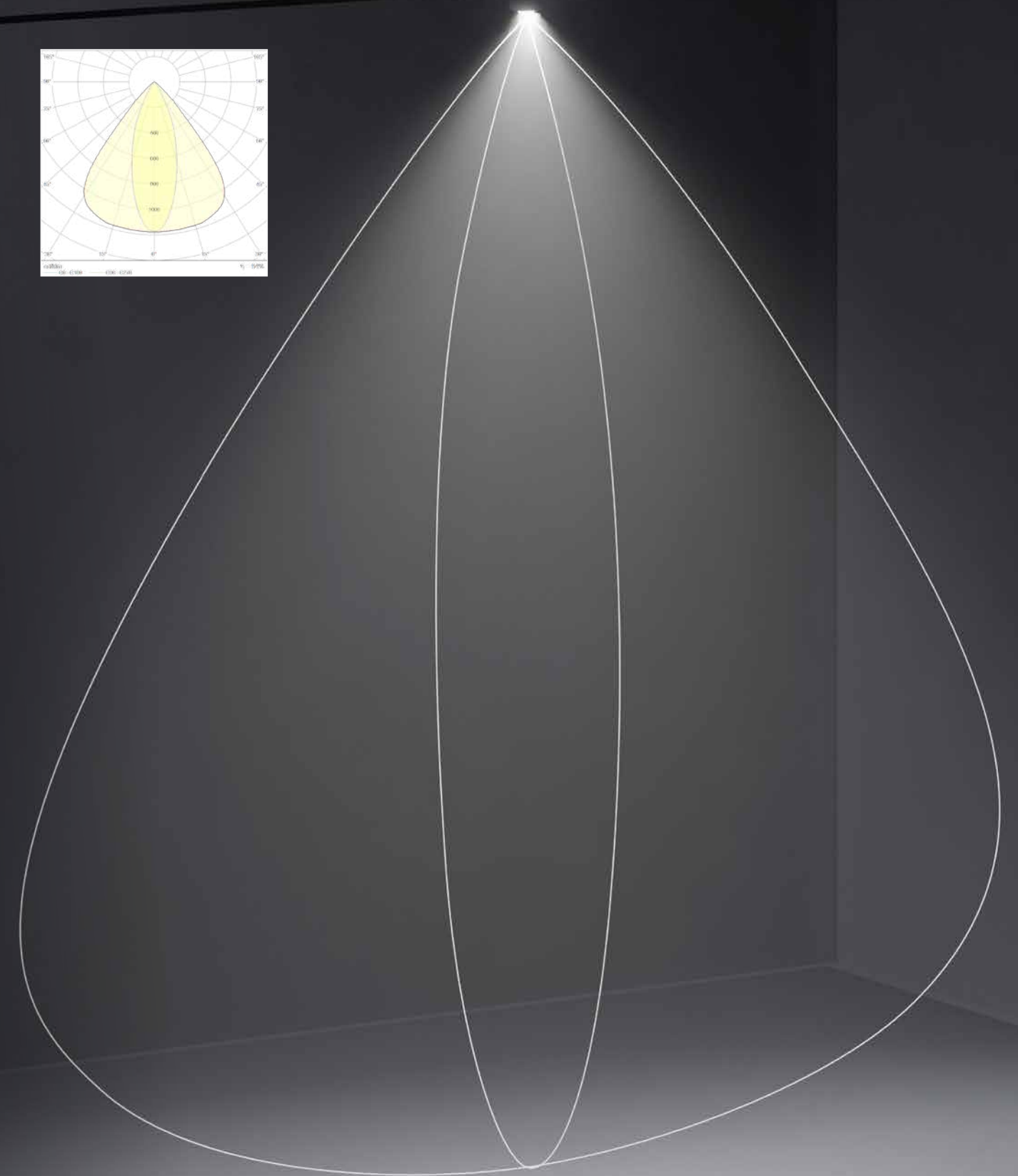
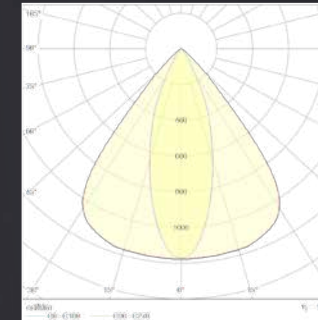
The specially defined gradient and degree of the frosting ensures high image quality on the illuminated surface with a very uniform halo, and at the same time increases visual comfort.

YUVIO UNIQUE LIGHT DISTRIBUTION.

The shape of the lens in combination with the applied structure defines the light distribution and quality of the light image.

The shape for the planar oval distribution (beam angle $34^\circ \times 78^\circ$) is reminiscent of the symbol for infinity.

The shape itself, the clear facets in the light injection area and partially frosted segments of the lens ensure a precise light image without disturbing colour shifts at the edge of the light beam.



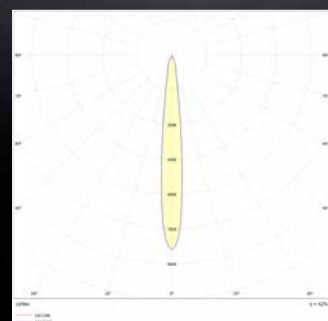
YUVIO LIGHTING TECHNOLOGY

PRECISION DOWN TO THE LAST DETAIL.

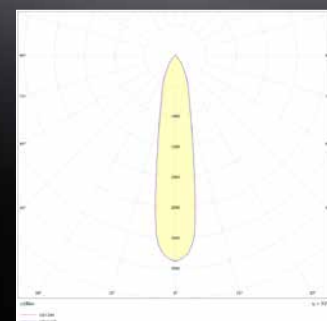
The free-form lenses are the visible feature of Yuvio's qualitative and unique lighting technology.

The result of the high-precision optical system is a solution that is virtually unrivalled on the market in terms of image quality, uniformity, visual comfort and diversity of applications. In addition to the unique oval light distribution, four rotationally symmetric distributions are also available.

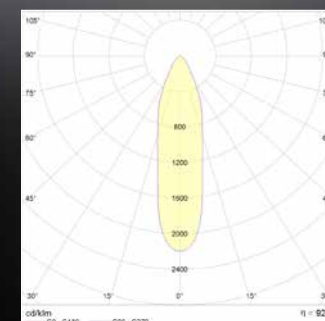
Beam characteristics



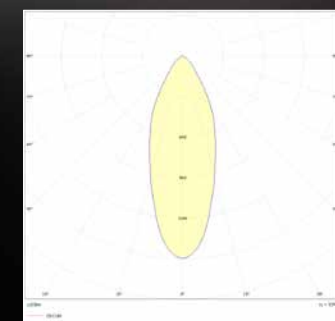
Super Spot – 12°



Spot – 20°



Medium Flood – 26°

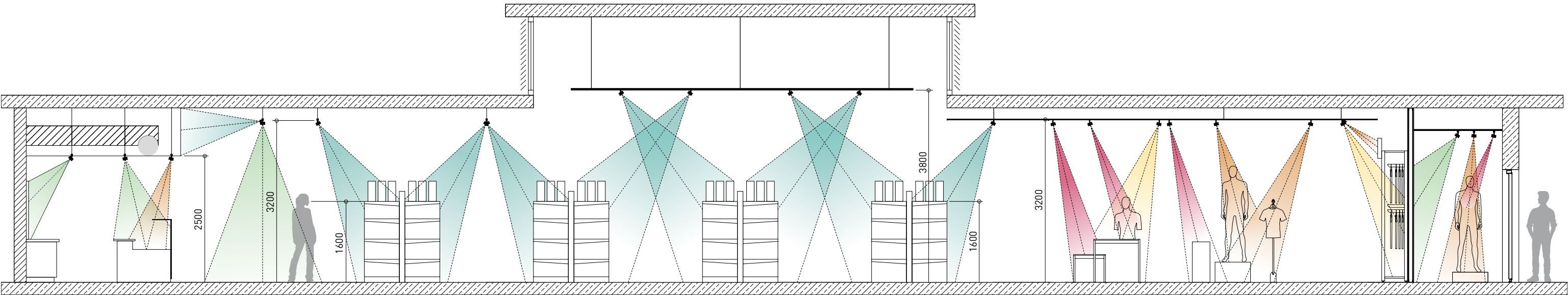
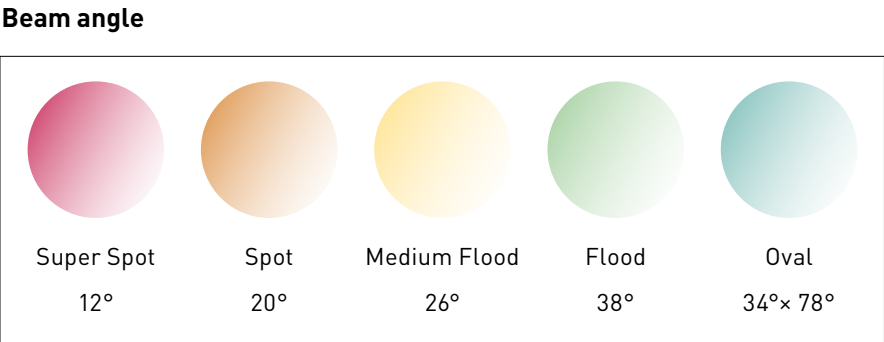


Flood – 38°

YUVIO

ONE SOLUTION – DIVERSE APPLICATION POSSIBILITIES.

The question of which light distribution is the right choice depends on the specific lighting task and the conditions on location.



SUPER SPOT

Super Spot free-form lenses produce a very narrow, point-shaped light image in the centre with a softly fading halo.

They are suitable for bridging larger distances as well as for the intensive three-dimensional illumination of objects.

SPOT

Spot free-form lenses are characterised by a point-shaped focus in the centre of the light image. The high illuminance levels within a small area create dynamic, vibrant presentations of the room or space.

MEDIUM FLOOD

Medium Flood free-form lenses model the surfaces of illuminated objects and softly emphasise them. When aligned vertically, they are suitable for more powerful ambient lighting.

FLOOD

Flood free-form lenses have a wide, softly fading light beam, and are used for general lighting or to illuminate larger surfaces or objects.

OVAL

Oval free-form lenses are the major differentiating feature of this special technology. They are predestined for the uniform illumination of linear merchandise fixtures from normal room heights.

The oval distribution is also very suitable for the general lighting of aisle zones.



YUVIO QUALITY OF LIGHT BY CONVICTION.

Our qualitative light inspired by the sun redefines brilliance, colour diversity and atmospheric lighting: more colour-intensive with greater colour fidelity and colour harmony. Artificial light – more natural than ever.

We continuously adapt the parameters of our lighting solutions to the needs of the market and the wishes of customers. In addition to the standard light colours, our colour-intensifying light colours BRILLIANT FOOD and BRILLIANT COLOUR ($R_a > 95$) as well as EFFICIENT WHITE and EFFICIENT COOL ($R_a > 90$) ensure the optimum display of merchandise with an extremely saturated colour impression of the illuminated areas.



2700 K, 3000 K
and Brilliant Food for
warm atmospheres

Brilliant Colour
and Efficient White
as all-rounders

3500 K, 4000 K
and Efficient Cool for
cooler atmospheres

BRILLIANT FOOD

The Brilliant Food special light colour enhances every fresh food area in the store. Fruit and vegetables benefit from more radiance and merchandise is displayed in rich and authentic colours.

For new shopping experiences.



BRILLIANT COLOUR

The Brilliant Colour special light colour ensures brilliant colours ($R_a > 95$) with outstanding colour rendering and intensive colour saturation. Fashion and merchandise are presented with an attractive depth of field.

For more emotionality in retail.



EFFICIENT WHITE

The Efficient White special light colour gives products an outstanding white appearance. Thanks to high efficiency combined with excellent colour rendering, product ranges look fresh and clear.

For more appeal in the store.



EFFICIENT COOL

The Efficient Cool special light colour features quality of light with a high colour temperature. This is ideal for stylish applications such as automotive show-rooms. The colour effect of drugstore products and fresh foods such as fish is optimised.

For a cooler illumination of merchandise.



LIVELINK LIGHT MANAGEMENT WHEN SMART INTELLIGENCE COMES TO LIGHT.

Optimum lighting, minimum energy consumption: light management with LiveLink enables the intelligent control of even complex lighting installations, reduces energy consumption by up to 85% and lowers your own carbon footprint.

From energetic optimisation to emotionalisation: New system or refurbishment of existing buildings? Window display or the complete store? Indoor or outdoor? Wireless or wired?

The diversity of the LiveLink light management portfolio offers the right solution for every project and almost every application.

DALI OR RADIO – THE PROJECT DETERMINES THE TECHNOLOGY.

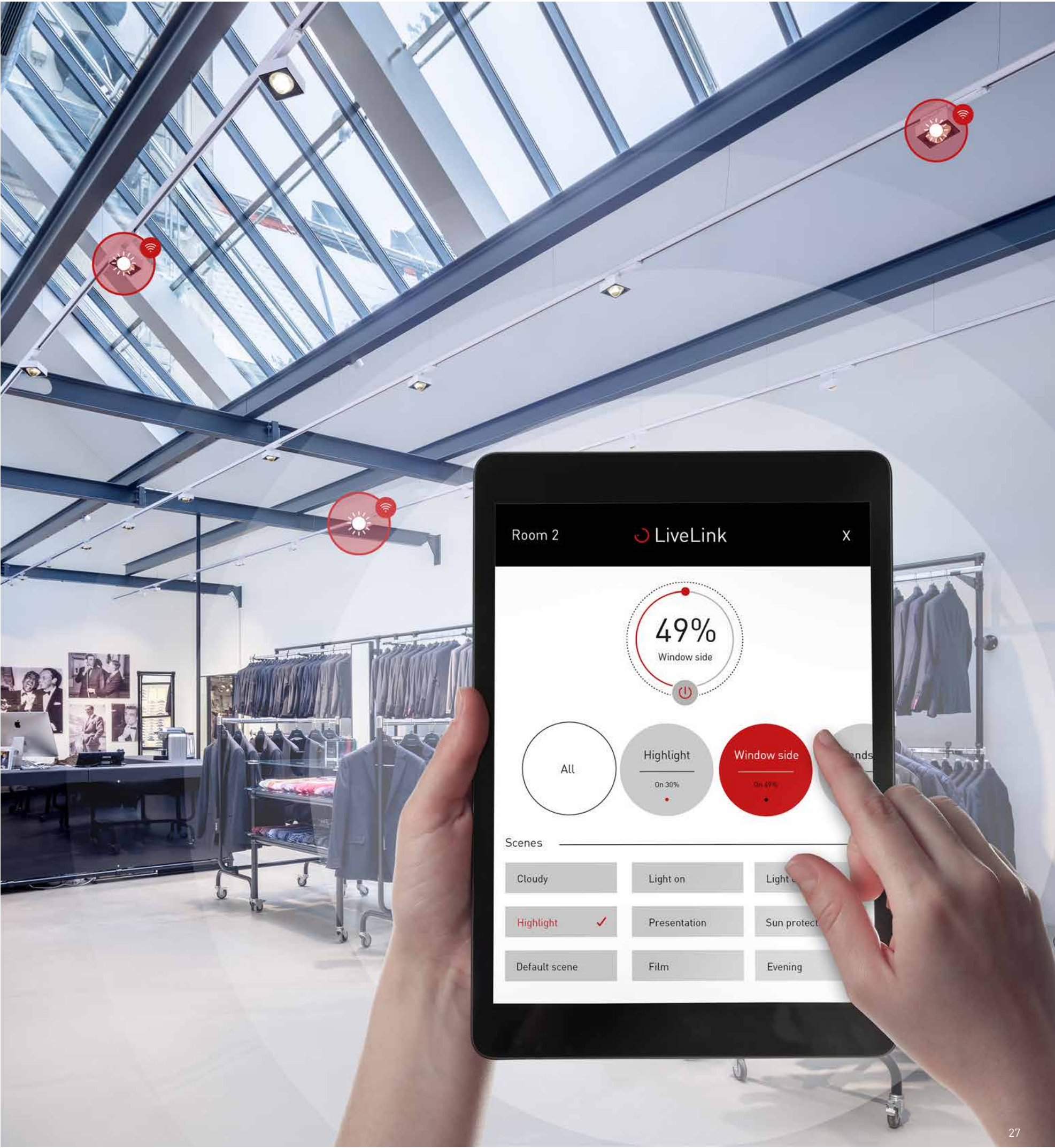
The LiveLink Retail app uses Bluetooth® Low Energy technology to make lighting in sales spaces future-proof with minimal effort and without additional cabling. That saves time, money and energy.

With the new LiveLink ONE app, you can control DALI-based lighting systems with a single app and benefit from intelligent functions for energy-efficient light management.

Simple commissioning and expandability, automated or time-dependent lighting control, and connectivity even without an internet connection.



Find out more at:
www.trilux.com/retail








YUVIO

TECHNICAL FEATURES



YUVIO TRACK

	Luminaire type Track spotlight
	Applications End-of-aisle displays, high decorative elements, merchandise fixtures, rear walls, graphics, store windows
	Action radius rotatable through 355°, pivotable 0-110°
	Fixing 3-circuit track, not suitable for vertical mounting
	Lighting technology LED, LED DALI, LED BLE
	Beam characteristic Super Spot, Spot, Medium Flood, Flood, Oval
	LED Luminous flux class 1,500 lm – 5,000 lm
	Light colours CRI 80 2700 K, 3000 K, 3500 K, 4000 K
	Light colours CRI 90 3100 K - Brilliant Colour, 3200 K - Efficient White, 4000 K - Efficient Cool
	Food light colour 2700 K - Brilliant Food, Meat, Meat+Fish
	Supply unit Integrated driver
	Colours Deep black (RAL 9005), metallic grey (RAL 9006), traffic white (RAL 9016); other colours on request
	Surface structure powder-coated
	Rated voltage 220 - 240 V, 50/60 Hz
	Weight approx. 1.5 kg

CE  IP20



YUVIO TWIN

	Luminaire type Track spotlight
	Application General lighting, merchandise aisles, rear walls, aisle zone
	Action radius rotatable through 314°, pivotable by 30° to each side
	Fixing 3-circuit track, not suitable for vertical mounting
	Lighting technology LED, LED DALI, LED BLE
	Beam characteristic Oval
	LED Luminous flux class 2 × 3,000 lm – 2 × 5,000 lm
	Light colours CRI 80 2700 K, 3000 K, 3500 K, 4000 K
	Light colours CRI 90 3200 K - Efficient White, 4000 K - Efficient Cool
	Food light colour –
	Supply unit Integrated driver
	Colours Deep black (RAL 9005), metallic grey (RAL 9006), traffic white (RAL 9016); other colours on request
	Surface structure powder-coated
	Rated voltage 220 - 240 V, 50/60 Hz
	Weight approx. 2.5 kg

CE  IP20



CONTACTS

TRILUX GmbH & Co. KG
Heidestrasse
59759 Arnsberg, Germany
PO Box 19 60
D-59753 Arnsberg
Tel. +49 2932 301-0
info@trilux.de
www.trilux.com

TRILUX LIGHTING LIMITED
TRILUX HOUSE, Winsford Way
Boreham Interchange
Chelmsford, Essex
CM2 5PD
Tel. +44 1245 463463
info.co.uk@trilux.com
www.trilux.com

All technical data including dimensional and weight specifications have been checked carefully. Errors excepted. Possible colour deviations are due to printing processes. We reserve the right to modify in the interest of progress. Luminaires are partly shown with accessories that must be ordered separately. Images of installations may show custom manufactured luminaires. Printed on PEFC-certified paper in an environmentally friendly way.

