



## B.VEO TRACK

### TRACK LIGHTS

What is special about this single spotlight variant is its extremely narrow housing that visually almost fuses with the power track. In that way a very uncluttered pattern of the ceiling lighting is obtained. This becomes possible through the integration of the driver into the adapter.



#### Subdued look

Uncluttered ceiling pattern due to extremely flat housing, spotlight with pinpoint accuracy.



#### Economical mounting

Fast, tool-free, inexpensive due to use of existing 3-current power tracks



#### Flexible illumination

Accents set easily: spotlight head turning through 355° and tilting through 90°



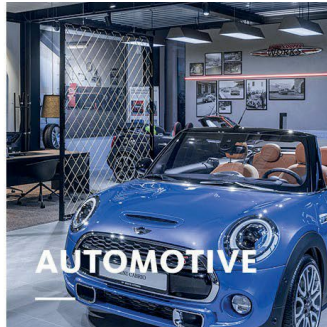
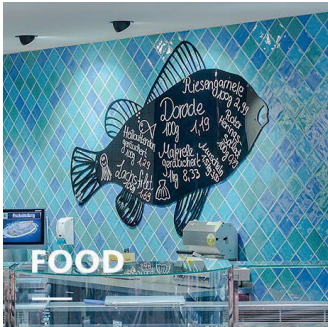
#### Strong directional spotlight

Maximum power by up to 5000 lumens in the mini spotlight



#### Intelligent light

Smart lighting management optionally with control line or wireless



**B.VEO TRACK**[www.oktalite.com/bveo-track-t](http://www.oktalite.com/bveo-track-t)

Luminaire type	Track Lights
Application areas	Accent lighting
Range of action	Can be rotated through 355° and swiveled through 90
Fastening	3P conductor rail, not suitable for vertical mounting
Lighting technology	LED, LED IQ DALI, LED IQ BLE
Beam angle	Spot, Medium Flood, Flood, Wide Flood, Very Wide Flood
LED luminous flux class	1500 lm - 5000 lm
Light colour CRI 80	2700 K, 3000 K, 3500 K, 4000 K
Light colour CRI 90	3100 K - Brilliant Colour, 3200 K - Efficient White, 4000 K - Efficient Cool
Light colour Food	2700 K - Brilliant Food, Meat, Meat + Fish
Variable light colour	Tunable White (2700 K - 6500 K)
Supply unit	Integrated driver
	RAL 9005 jet black
Luminaire colour	RAL 9006 white aluminum RAL 9016 traffic white Special colours on request
Surface	Structure powder-coated
Nominal voltage	220 - 240 V, 50/60Hz
Weight	approx. 1.1 kg
Test mark	