



## CANILO PLUS

Suspended luminaires

The CANILO PLUS pendant luminaire adds another power package to the Canilo luminaire family. With up to 6000 lumens, it is the ideal choice for rooms with high ceilings or areas where strong accents and a dramatic interplay of light and shadow are desired. The tool-free adjustment of the pendant length guarantees simple installation.



### Individual style

Side flap can be color-matched to customer CI



### Uniform effect

The suspension and bracket specify the mounting direction and ensure a calm overall appearance if there are several luminaires.



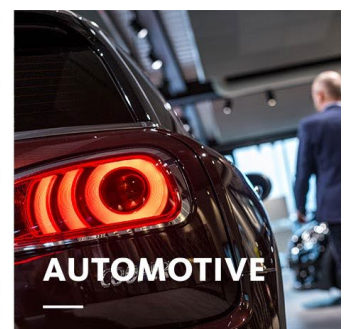
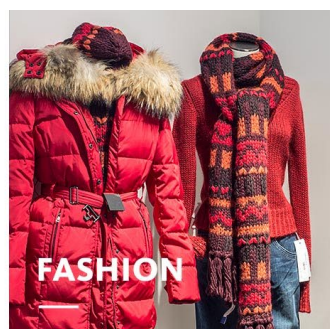
### Various mounting options

A ceiling canopy, a ceiling round or an adapter for attaching to conductor rails are available for mounting






### High visual comfort

Recessed reflector ensures good glare control with no loss of light



## CANILO PLUS

[www.oktalite.com/canilo-plus](http://www.oktalite.com/canilo-plus)

|                         |   |
|-------------------------|---|
| Luminaire type          | Suspended luminaires  |
| Application areas       | Accent lighting   |
| Range of action         | rigid   |
| Fastening               | 3P conductor rail, structure  |
| Ceiling thickness       | 1 - 25 mm   |
| Pendulum length         | 1500 mm, 3000 mm  |
| Lighting technology     | LED   |
| Beam angel              | Spot, Medium Flood, Flood, Wide Flood, Very Wide Flood  |
| LED luminous flux class | 4000 lm   |
| Light colour CRI 80     | 3000 K, 4000 K  |
| Light colour CRI 90     | 3200 K - Efficient White  |
| Supply unit             | Integrated driver   |
| Luminaire colour        | RAL 9005 jet black  |
|                         | RAL 9016 traffic white  |
|                         | Special colours on request  |
| Surface                 | structure powder-coated   |
| Nominal voltage         | 220 - 240 V, 50/60Hz  |
| Weight                  | approx. 3.0 kg  |
| Test mark               |    |

