



TOKO PLUS

RECESSED LUMINAIRE

This LED downlight is an ideal partner for the sales floor. The simple design makes TOKO PLUS the favourite. The ceiling-recessed luminaire reliably supplies optionally homogeneous or accentuated light for all groups of goods. Equipped with our unique 3D faceted reflectors, the luminaire with four beam angles provides more possibilities for targeted illumination.



Four beam angles thanks to 3D faceted reflector

Homogeneous or accentuated illumination quite easy: Beam angled of 28°, 38°, 48° and 60°



Strong luminous flux

Up to 5000 lm ideal for rooms with high ceilings



Well thought-out fastening

Our own development for easy assembly



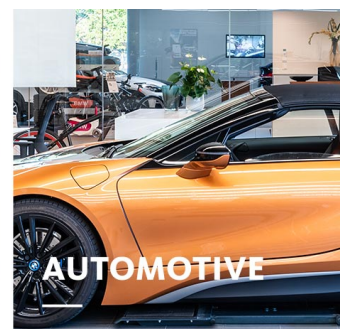
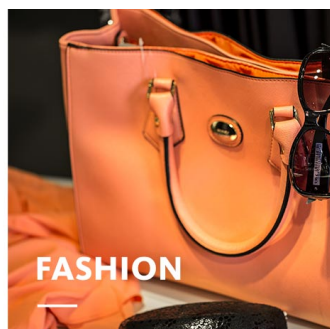
Large LED selection

Six white light colours up to 5000 lm



Intelligent lighting

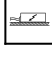
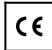
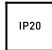

LED^{IO} for your smart lighting management

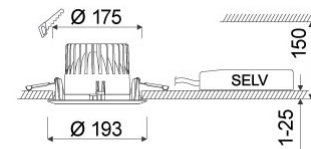


TOKO PLUS

oktalite

www.oktalite.com/toko-plus-r

Type of luminaire	recessed luminaire
Application areas	base illumination
Pan/tilt range	fixed
Mounting	Okталite folding spring
Ceiling thickness	1 - 25 mm
Lighting technology	LED ^{IQ} DALI
LED Luminous Flux Class	4000 lm - 5000 lm
Light colour White	2700 K, 3000 K, 3000 K - Efficient White, 3000 K - Brilliant Colour, 3500 K, 4000 K
Cooling	passive
Supply unit	DALI driver separate
Luminaire colour	RAL 9005 jet black RAL 9006 white aluminium RAL 9016 traffic white Special colours on request
Surface	structure powder-coated
Nominal voltage	220 - 240 V, 50/60Hz
Lighting controls	DALI DT6
Weight	Approx. 1.2 kg
Components	 Luminaire housing  Supply unit
Test seal	  



Technical details as well as weight specifications and measurements have been prepared with care. Errors excepted. All dimensions in mm · LED service life data: L80/B10 at ambient temperature (ta) 25°C. Rated lamp service life 50,000h. Luminous flux and efficiency specifications are subject to a tolerance of +/- 10%. Min CRI Ra: >80 / >90 · Product images are used as an example and may differ from the original · We reserve the right to make changes, insofar as they serve progress. Okталite Lichttechnik GmbH · Mathias-Brüggen-Str. 73 · 50829 Cologne · T +49 221 59767-0 · F +49 221 59767-40 · mail@oktalite.com · www.oktalite.com · 2020-11-26

Luminaire housing - LED^{IQ} DALI

TOKO PLUS

oktalite

Beam angle

Medium Flood



LED Luminous Flux Class	Light colour	CRI R _a	system luminous flux	System performance	Cover	Order number		
						white	silver	black
4000 lm	3000 K - Brilliant Colour	97	3800 lm	46 W	clear	10217722	10217723	10217724
4000 lm	3000 K - Brilliant Colour	97	3975 lm	46 W	without	10217650	10217651	10217652
5000 lm	2700 K	81	4425 lm	36 W	clear	10217707	10217708	10217709
5000 lm	2700 K	81	4630 lm	36 W	without	10217635	10217636	10217637
5000 lm	3000 K	83	4550 lm	36 W	clear	10217710	10217711	10217712
5000 lm	3000 K	83	4760 lm	36 W	without	10217638	10217639	10217640
5000 lm	3000 K - Efficient White	94	4800 lm	46 W	clear	10217713	10217714	10217715
5000 lm	3000 K - Efficient White	94	5020 lm	46 W	without	10217641	10217642	10217643
5000 lm	3500 K	84	4640 lm	36 W	clear	10217716	10217717	10217718
5000 lm	3500 K	84	4855 lm	36 W	without	10217644	10217645	10217646
5000 lm	4000 K	83	4795 lm	36 W	clear	10217719	10217720	10217721
5000 lm	4000 K	83	5015 lm	36 W	without	10217647	10217648	10217649

Technical details as well as weight specifications and measurements have been prepared with care. Errors excepted. All dimensions in mm · LED service life data: L80/B10 at ambient temperature (ta) 25°C. Rated lamp service life 50,000h. Luminous flux and efficiency specifications are subject to a tolerance of +/- 10%. Min CRI Ra: >80 / >90 · Product images are used as an example and may differ from the original · We reserve the right to make changes, insofar as they serve progress. Oktalite Lichttechnik GmbH · Mathias-Brüggen-Str. 73 · 50829 Cologne · T +49 221 59767-0 · F +49 221 59767-40 · mail@oktalite.com · www.oktalite.com · 2020-11-26

**TOKO PLUS****oktalite**

Beam angle

Flood



LED Luminous Flux Class	Light colour	CRI R _a	system luminous flux	System performance	Cover	Order number		
						white	silver	black
4000 lm	3000 K - Brilliant Colour	97	3800 lm	46 W	clear	10217740	10217741	10217742
4000 lm	3000 K - Brilliant Colour	97	3975 lm	46 W	without	10217668	10217669	10217670
5000 lm	2700 K	81	4425 lm	36 W	clear	10217725	10217726	10217727
5000 lm	2700 K	81	4630 lm	36 W	without	10217653	10217654	10217655
5000 lm	3000 K	83	4550 lm	36 W	clear	10217728	10217729	10217730
5000 lm	3000 K	83	4760 lm	36 W	without	10217656	10217657	10217658
5000 lm	3000 K - Efficient White	94	4800 lm	46 W	clear	10217731	10217732	10217733
5000 lm	3000 K - Efficient White	94	5020 lm	46 W	without	10217659	10217660	10217661
5000 lm	3500 K	84	4640 lm	36 W	clear	10217734	10217735	10217736
5000 lm	3500 K	84	4855 lm	36 W	without	10217662	10217663	10217664
5000 lm	4000 K	83	4795 lm	36 W	clear	10217737	10217738	10217739
5000 lm	4000 K	83	5015 lm	36 W	without	10217665	10217666	10217667

Technical details as well as weight specifications and measurements have been prepared with care. Errors excepted. All dimensions in mm · LED service life data: L80/B10 at ambient temperature (ta) 25°C. Rated lamp service life 50,000h. Luminous flux and efficiency specifications are subject to a tolerance of +/- 10%. Min CRI Ra: >80 / >90 · Product images are used as an example and may differ from the original · We reserve the right to make changes, insofar as they serve progress. Oktalite Lichttechnik GmbH · Mathias-Brüggen-Str. 73 · 50829 Cologne · T +49 221 59767-0 · F +49 221 59767-40 · mail@oktalite.com · www.oktalite.com · 2020-11-26



TOKO PLUS

oktalite

Beam angle

Wide Flood



LED Luminous Flux Class	Light colour	CRI R _a	system luminous flux	System performance	Cover	Order number		
						white	silver	black
4000 lm	3000 K - Brilliant Colour	97	3800 lm	46 W	clear	10217758	10217759	10217760
4000 lm	3000 K - Brilliant Colour	97	3970 lm	46 W	without	10217686	10217687	10217688
5000 lm	2700 K	81	4425 lm	36 W	clear	10217743	10217744	10217745
5000 lm	2700 K	81	4625 lm	36 W	without	10217671	10217672	10217673
5000 lm	3000 K	83	4550 lm	36 W	clear	10217746	10217747	10217748
5000 lm	3000 K	83	4755 lm	36 W	without	10217674	10217675	10217676
5000 lm	3000 K - Efficient White	94	4800 lm	46 W	clear	10217749	10217750	10217751
5000 lm	3000 K - Efficient White	94	5020 lm	46 W	without	10217677	10217678	10217679
5000 lm	3500 K	84	4640 lm	36 W	clear	10217752	10217753	10217754
5000 lm	3500 K	84	4850 lm	36 W	without	10217680	10217681	10217682
5000 lm	4000 K	83	4790 lm	36 W	clear	10217755	10217756	10217757
5000 lm	4000 K	83	5010 lm	36 W	without	10217683	10217684	10217685

Technical details as well as weight specifications and measurements have been prepared with care. Errors excepted. All dimensions in mm · LED service life data: L80/B10 at ambient temperature (ta) 25°C. Rated lamp service life 50,000h. Luminous flux and efficiency specifications are subject to a tolerance of +/- 10%. Min CRI Ra: >80 / >90 · Product images are used as an example and may differ from the original · We reserve the right to make changes, insofar as they serve progress. Oktalite Lichttechnik GmbH · Mathias-Brüggen-Str. 73 · 50829 Cologne · T +49 221 59767-0 · F +49 221 59767-40 · mail@oktalite.com · www.oktalite.com · 2020-11-26

**TOKO PLUS****oktalite**

Beam angle

Very Wide Flood



LED Luminous Flux Class	Light colour	CRI R _a	system luminous flux	System performance	Cover	Order number		
						white	silver	black
4000 lm	3000 K - Brilliant Colour	97	3800 lm	46 W	clear	10217776	10217777	10217778
4000 lm	3000 K - Brilliant Colour	97	3975 lm	46 W	without	10217704	10217705	10217706
5000 lm	2700 K	81	4425 lm	36 W	clear	10217761	10217762	10217763
5000 lm	2700 K	81	4625 lm	36 W	without	10217689	10217690	10217691
5000 lm	3000 K	83	4550 lm	36 W	clear	10217764	10217765	10217766
5000 lm	3000 K	83	4760 lm	36 W	without	10217692	10217693	10217694
5000 lm	3000 K - Efficient White	94	4800 lm	46 W	clear	10217767	10217768	10217769
5000 lm	3000 K - Efficient White	94	5020 lm	46 W	without	10217695	10217696	10217697
5000 lm	3500 K	84	4640 lm	36 W	clear	10217770	10217771	10217772
5000 lm	3500 K	84	4850 lm	36 W	without	10217698	10217699	10217700
5000 lm	4000 K	83	4795 lm	36 W	clear	10217773	10217774	10217775
5000 lm	4000 K	83	5015 lm	36 W	without	10217701	10217702	10217703

Efficient White: R₉ = 75, R_r = 91, R_g = 102Brilliant Colour: R₉ = 94, R_r = 95, R_g = 104

Technical details as well as weight specifications and measurements have been prepared with care. Errors excepted. All dimensions in mm · LED service life data: L80/B10 at ambient temperature (ta) 25°C. Rated lamp service life 50,000h. Luminous flux and efficiency specifications are subject to a tolerance of +/- 10%. Min CRI Ra: >80 / >90 · Product images are used as an example and may differ from the original · We reserve the right to make changes, insofar as they serve progress. Oktalite Lichttechnik GmbH · Mathias-Brüggen-Str. 73 · 50829 Cologne · T +49 221 59767-0 · F +49 221 59767-40 · mail@oktalite.com · www.oktalite.com · 2020-11-26



Optic Toko Plus - LED^{IQ} DALI

oktalite

Optic 3D faceted reflectors
 Type Optic integrated

Beam angle
Medium Flood

Toko Plus - MF			
Höhe [m]	KegelØ [cm]	E(0°) [lx/klm]	E(C0) [lx/klm]
1	52	2233	1014
2	103	558	253
3	155	248	113

Cover	LOR
without	91 %
clear	87 %

Beam angle
Flood

Toko Plus - FL			
Höhe [m]	KegelØ [cm]	E(0°) [lx/klm]	E(C0) [lx/klm]
1	70	1772	751
2	139	443	188
3	209	197	83

Cover	LOR
without	91 %
clear	87 %

Beam angle
Wide Flood

Toko Plus - WFL			
Höhe [m]	KegelØ [cm]	E(0°) [lx/klm]	E(C0) [lx/klm]
1	98	1341	485
2	197	335	121
3	295	149	54

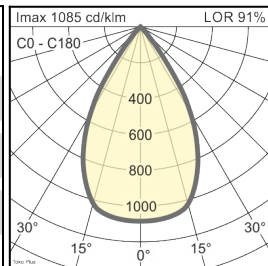
Cover	LOR
without	91 %
clear	87 %

Technical details as well as weight specifications and measurements have been prepared with care. Errors excepted. All dimensions in mm · LED service life data: L80/B10 at ambient temperature (ta) 25°C. Rated lamp service life 50,000h. Luminous flux and efficiency specifications are subject to a tolerance of +/- 10%. Min CRI Ra: >80 / >90 · Product images are used as an example and may differ from the original · We reserve the right to make changes, insofar as they serve progress. Oktalite Lichttechnik GmbH · Mathias-Brüggen-Str. 73 · 50829 Cologne · T +49 221 59767-0 · F +49 221 59767-40 · mail@oktalite.com · www.oktalite.com · 2020-11-26

Beam angle

Very Wide Flood

Toko Plus - VFL			
Höhe [m]	KegelØ [cm]	E(0°) [lx/klm]	E(C0) [lx/klm]
1	116	1085	353
2	232	271	88
3	348	121	39



Cover

LOR

without

91 %

clear

87 %

Technical details as well as weight specifications and measurements have been prepared with care. Errors excepted. All dimensions in mm · LED service life data: L80/B10 at ambient temperature (ta) 25°C. Rated lamp service life 50,000h. Luminous flux and efficiency specifications are subject to a tolerance of +/- 10%. Min CRI Ra: >80 / >90 · Product images are used as an example and may differ from the original · We reserve the right to make changes, insofar as they serve progress. Oktalite Lichttechnik GmbH · Mathias-Brüggen-Str. 73 · 50829 Cologne · T +49 221 59767-0 · F +49 221 59767-40 · mail@oktalite.com · www.oktalite.com · 2020-11-26



Supply unit - LED^{IQ} DALI

DALI driver

oktalite

Connection type	Pre-wired plug-in connectivity
Mains connection	GST 18i3
Cable length secondary	400 mm
Nominal voltage	220 - 240 V, 50/60Hz
protection	IP20
protection class	I, II
Lighting controls	DALI DT6
Lighting technology	LED ^{IQ} DALI

Lighting technology	Luminaire connection	Output	System performance	max. luminaires B16	Order number
LED IQ DALI	RNV	950 mA	36 W	50	10185640
LED IQ DALI	RNV	1200 mA	46 W	20	10185643

Technical details as well as weight specifications and measurements have been prepared with care. Errors excepted. All dimensions in mm · LED service life data: L80/B10 at ambient temperature (ta) 25°C. Rated lamp service life 50,000h. Luminous flux and efficiency specifications are subject to a tolerance of +/- 10%. Min CRI Ra: >80 / >90 · Product images are used as an example and may differ from the original · We reserve the right to make changes, insofar as they serve progress. Oktalite Lichttechnik GmbH · Mathias-Brüggen-Str. 73 · 50829 Cologne · T +49 221 59767-0 · F +49 221 59767-40 · mail@oktalite.com · www.oktalite.com · 2020-11-26