

LORETO SQUARE

SUSPENDED LUMINAIRE

With LORETO SQUARE, our round panel light has found its worthy supplement. The power package can be fitted up to 11000 lumens for the effective customer guidance in malls and entrance areas. Whether surface-mounted or suspended, the "new one" permits a varied play with shapes and sizes. In that way lighting can be integrated as a visible area into modern shop fitting concepts for great mixing and matching.

Flexible dimensions

330, 600, 870 - from the combination of these dimensions the luminaire size as a custom-made design is obtained



Alternative shape

Square shape as the standard or rectangular shape as a custom-made design



Optional type of installation

Suspended installation or ceiling mounting selectable



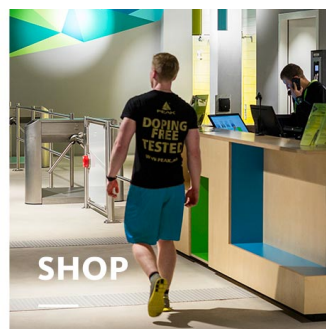
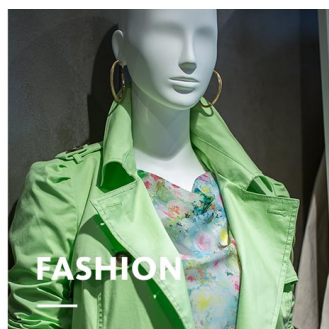
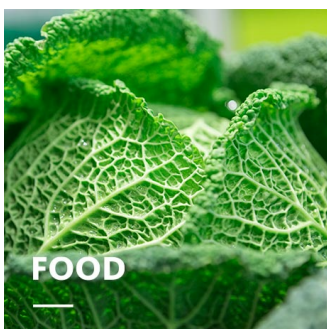
Different light colours

3000 K, 4000 K or ACTIVE for flowing light mood



Intelligent lighting

LED^{IQ} for your smart lighting management



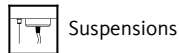
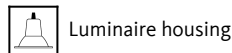
LORETO SQUARE

oktalite

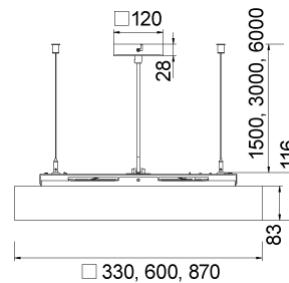
www.oktalite.com/loreto-square-p

Type of luminaire	suspended luminaire
Application areas	base illumination
Pan/tilt range	fixed
Mounting	Surface mounted
Lighting technology	LED ^{IQ} DALI
LED Luminous Flux Class	1500 lm - 11000 lm
Light colour White	3000 K, 4000 K, Active 2700-6500 K
Cooling	passive
Supply unit	DALI driver integrated
Luminaire colour	RAL 9005 jet black RAL 9006 white aluminium RAL 9016 traffic white Special colours on request

Surface	structure powder-coated
Suspension length	1500mm, 3000mm, 6000mm
Nominal voltage	220 - 240 V, 50/60Hz
Lighting controls	DALI DT6, DALI DT8 (Active)
Installation	Recommended for new installation.
Weight	4.9 kg / 11.2 kg / 19.8 kg
Components	



Test seal



Technical details as well as weight specifications and measurements have been prepared with care. Errors excepted. All dimensions in mm · LED service life data: L80/B10 at ambient temperature (ta) 25°C. Rated lamp service life 50,000h. Luminous flux and efficiency specifications are subject to a tolerance of +/- 10%. Min CRI Ra: >80 / >90 · Product images are used as an example and may differ from the original · We reserve the right to make changes, insofar as they serve progress. Oktalite Lichttechnik GmbH · Mathias-Brüggen-Str. 73 · 50829 Cologne · T +49 221 59767-0 · F +49 221 59767-40 · mail@oktalite.com · www.oktalite.com · 2020-10-01

**LORETO SQUARE****oktalite**

Size	LED Luminous Flux Class	Light colour	CRI R _a	system luminous flux	System performance	Order number		
						white	silver	black
□ 330 mm	1500 lm	3000 K	80	1410 lm	14 W	10194156	10194157	10194158
□ 330 mm		4000 K	80	1450 lm	14 W	10194159	10194160	10194161
□ 330 mm		Active 2700-6500 K	-	-		10202319	10202320	10202321
□ 330 mm		2700 K	80	1275 lm	14 W			
□ 330 mm		6500 K	80	1385 lm	14 W			
□ 600 mm	5000 lm	3000 K	80	5390 lm	42 W	10194168	10194169	10194170
□ 600 mm		4000 K	80	5670 lm	42 W	10194171	10194172	10194173
□ 600 mm		Active 2700-6500 K	-	-		10202325	10202326	10202327
□ 600 mm		2700 K	80	5730 lm	45 W			
□ 600 mm		6500 K	80	5745 lm	41 W			
□ 870 mm	11000 lm	3000 K	80	11775 lm	85 W	10194180	10194181	10194182
□ 870 mm		4000 K	80	12585 lm	85 W	10194183	10194184	10194185
□ 870 mm		Active 2700-6500 K	-	-		10202331	10202332	10202333
□ 870 mm		2700 K	80	12115 lm	94 W			
□ 870 mm		6500 K	80	12140 lm	87 W			

Technical details as well as weight specifications and measurements have been prepared with care. Errors excepted. All dimensions in mm · LED service life data: L80/B10 at ambient temperature (ta) 25°C. Rated lamp service life 50,000h. Luminous flux and efficiency specifications are subject to a tolerance of +/- 10%. Min CRI Ra: >80 / >90 · Product images are used as an example and may differ from the original · We reserve the right to make changes, insofar as they serve progress. Oktalite Lichttechnik GmbH · Mathias-Brüggen-Str. 73 · 50829 Cologne · T +49 221 59767-0 · F +49 221 59767-40 · mail@oktalite.com · www.oktalite.com · 2020-10-01



Optic - LED^{IQ} DALI

Optic Loreto - LED^{IQ} DALI

oktalite

Optic

Diffuser (opal)

Type

Optic integrated

Beam angle

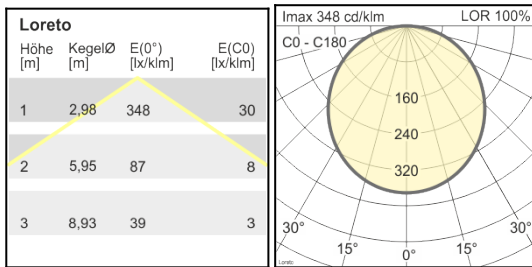
Lambertian light distribution

Cover

LOR

without

100 %



Technical details as well as weight specifications and measurements have been prepared with care. Errors excepted. All dimensions in mm · LED service life data: L80/B10 at ambient temperature (ta) 25°C. Rated lamp service life 50,000h. Luminous flux and efficiency specifications are subject to a tolerance of +/- 10%. Min CRI Ra: >80 / >90 · Product images are used as an example and may differ from the original · We reserve the right to make changes, insofar as they serve progress. Oktalite Lichttechnik GmbH · Mathias-Brüggen-Str. 73 · 50829 Cologne · T +49 221 59767-0 · F +49 221 59767-40 · mail@oktalite.com · www.oktalite.com · 2020-10-01



Mounting - LED^{IQ} DALI

Suspensions

oktalite

Lead colour	transparent
Luminaire connection	GST15/5
Number of wire suspensions	4 wires

Mounting	Suspension length	Order number		
		white	silver	black
Surface mounted	1500mm	10207324	10207325	10207326
Surface mounted	3000mm	10207327	10207328	10207329
Surface mounted	6000mm	10207330	10207331	10207332

Technical details as well as weight specifications and measurements have been prepared with care. Errors excepted. All dimensions in mm · LED service life data: L80/B10 at ambient temperature (ta) 25°C. Rated lamp service life 50,000h. Luminous flux and efficiency specifications are subject to a tolerance of +/- 10%. Min CRI Ra: >80 / >90 · Product images are used as an example and may differ from the original · We reserve the right to make changes, insofar as they serve progress. Oktalite Lichttechnik GmbH · Mathias-Brüggen-Str. 73 · 50829 Cologne · T +49 221 59767-0 · F +49 221 59767-40 · mail@oktalite.com · www.oktalite.com · 2020-10-01