



## LOBU

TRACK LIGHT

LOBU brings reduced luminaire design in a small structural shape with powerful lighting characteristics onto the sales floor. The best possible light distribution in every tilted position systematically sets the scene for the goods. Colour combination possibilities for the housing and the reflector ring provide design freedom for more individuality.



### High mobility

Can be tilted through 220° and turned through up to 355°



### Efficient power package

Large lumen package with low size



### Optional design

Front ring optionally in black available



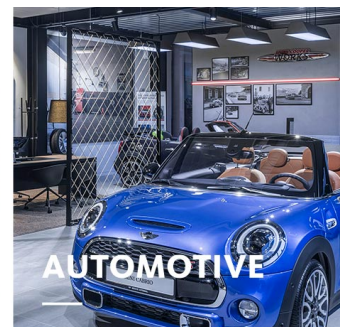
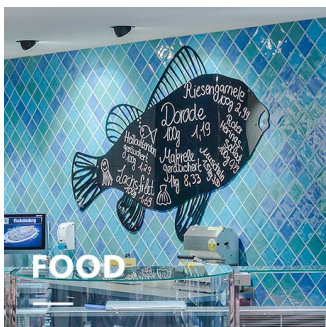
### Five reflectors

Five different segmented reflectors for optimum light distribution



### Smart lighting





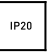

LED<sup>IO</sup> for intelligent lighting management



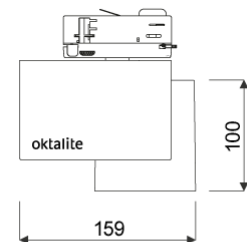
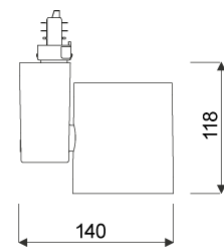
# LOBU

# oktalite

[www.oktalite.com/lobu-t](http://www.oktalite.com/lobu-t)

Type of luminaire	track light
Application areas	Accent lighting
Pan/tilt range	355° turning range, 220° swivel range
Mounting	3P Power Track Typ Global DALI, not suitable for vertical mounting
Lighting technology	LED <sup>IQ</sup> DALI
LED Luminous Flux Class	2000 lm - 4000 lm
Light colour White	2700 K, 3000 K, 3000 K - Efficient White, 3000 K - Brilliant Colour, 3500 K, 4000 K
Light colour Food*	M, M+F, BF
Cooling	passive
Supply unit	DALI driver integrated
Luminaire colour	RAL 9005 jet black RAL 9006 white aluminium RAL 9016 traffic white Special colours on request
Surface	structure powder-coated
Nominal voltage	220 - 240 V, 50/60Hz
Lighting controls	DALI DT6
Installation	Recommended for new installation.
Weight	Approx. 1.3 kg
Components	 Luminaire housing  Optic
Test seal	   

\* M = Meat,  
M = Meat, F = Fish,  
BF = Brilliant Food



Technical details as well as weight specifications and measurements have been prepared with care. Errors excepted. All dimensions in mm · LED service life data: L80/B10 at ambient temperature (ta) 25°C. Rated lamp service life 50,000h. Luminous flux and efficiency specifications are subject to a tolerance of +/- 10%. Min CRI Ra: >80 / >90 · Product images are used as an example and may differ from the original · We reserve the right to make changes, insofar as they serve progress. Oktalite Lichttechnik GmbH · Mathias-Brüggen-Str. 73 · 50829 Cologne · T +49 221 59767-0 · F +49 221 59767-40 · mail@oktalite.com · www.oktalite.com · 2020-09-28

**LOBU****oktalite**

LED Luminous Flux Class	Light colour	CRI R <sub>a</sub>	system luminous flux*	System performance	Order number		
					white	silver	black
3000 lm	3000 K - Brilliant Colour	97	2630 lm	35 W	10198558	10198559	10198560
4000 lm	2700 K	81	3370 lm	31 W	10198561	10198562	10198563
	3000 K	83	3510 lm	31 W	10198564	10198565	10198566
	3000 K - Efficient White	94	3460 lm	37 W	10198555	10198556	10198557
	3500 K	84	3580 lm	31 W	10198567	10198568	10198569
	4000 K	83	3650 lm	31 W	10198570	10198571	10198572
2000 lm	M	-	1705 lm	31 W	10198546	10198547	10198548
	M+F	-	1610 lm	31 W	10198549	10198550	10198551
4000 lm	BF	-	3035 lm	41 W	10198552	10198553	10198554

\* System luminous flux based on medium flood reflector.



Efficient White: R<sub>9</sub> = 75, R<sub>f</sub> = 91, R<sub>g</sub> = 102



Brilliant Colour: R<sub>9</sub> = 94, R<sub>f</sub> = 95, R<sub>g</sub> = 104

Technical details as well as weight specifications and measurements have been prepared with care. Errors excepted. All dimensions in mm · LED service life data: L80/B10 at ambient temperature (ta) 25°C. Rated lamp service life 50,000h. Luminous flux and efficiency specifications are subject to a tolerance of +/- 10%. Min CRI Ra: >80 / >90 · Product images are used as an example and may differ from the original · We reserve the right to make changes, insofar as they serve progress. Oktalite Lichttechnik GmbH · Mathias-Brüggen-Str. 73 · 50829 Cologne · T +49 221 59767-0 · F +49 221 59767-40 · mail@oktalite.com · www.oktalite.com · 2020-09-28



## Optic 85 - LED IQ DALI

oktalite

Optic

3D faceted reflectors

Type

interchangeable reflector system

Beam angle				Cover	LOR	Order number		
Spot						white	silver	black
<b>Optik 85 - SP</b>				without	82 %	-	-	10183944
Höhe [m]	KegelØ [cm]	E(0°) [lx/klm]	E(C0) [lx/klm]	clear	78 %	-	-	10184576
1	26	5755	2841					
2	52	1439	710					
3	78	639	316					

Beam angle				Cover	LOR	Order number		
Medium Flood						white	silver	black
<b>Optik 85 - MF</b>				without	83 %	-	-	10183959
Höhe [m]	KegelØ [cm]	E(0°) [lx/klm]	E(C0) [lx/klm]	clear	79 %	-	-	10184577
1	45	2845	1321					
2	91	711	330					
3	136	316	147					

Beam angle				Cover	LOR	Order number		
Flood						white	silver	black
<b>Optik 85 - FL</b>				without	82 %	-	-	10183953
Höhe [m]	KegelØ [cm]	E(0°) [lx/klm]	E(C0) [lx/klm]	clear	78 %	-	-	10184578
1	66	1941	832					
2	132	485	208					
3	197	216	92					

Technical details as well as weight specifications and measurements have been prepared with care. Errors excepted. All dimensions in mm · LED service life data: L80/B10 at ambient temperature (ta) 25°C. Rated lamp service life 50,000h. Luminous flux and efficiency specifications are subject to a tolerance of +/- 10%. Min CRI Ra: >80 / >90 · Product images are used as an example and may differ from the original · We reserve the right to make changes, insofar as they serve progress. Oktalite Lichttechnik GmbH · Mathias-Brüggen-Str. 73 · 50829 Cologne · T +49 221 59767-0 · F +49 221 59767-40 · mail@oktalite.com · www.oktalite.com · 2020-09-28



# Optic 85 - LED<sup>IQ</sup> DALI

# oktalite

Optic 3D faceted reflectors  
Type interchangeable reflector system

Beam angle				Cover	LOR	Order number																						
Wide Flood						white	silver	black																				
<table border="1"> <thead> <tr> <th colspan="4">Optik 85 - WFL</th> </tr> <tr> <th>Höhe [m]</th> <th>KegelØ [cm]</th> <th>E(0°) [lx/klm]</th> <th>E(C0) [lx/klm]</th> </tr> </thead> <tbody> <tr> <td>1</td> <td>83</td> <td>1522</td> <td>601</td> </tr> <tr> <td>2</td> <td>167</td> <td>381</td> <td>150</td> </tr> <tr> <td>3</td> <td>250</td> <td>169</td> <td>67</td> </tr> </tbody> </table>				Optik 85 - WFL				Höhe [m]	KegelØ [cm]	E(0°) [lx/klm]	E(C0) [lx/klm]	1	83	1522	601	2	167	381	150	3	250	169	67					
Optik 85 - WFL																												
Höhe [m]	KegelØ [cm]	E(0°) [lx/klm]	E(C0) [lx/klm]																									
1	83	1522	601																									
2	167	381	150																									
3	250	169	67																									
				without	82 %	-	-	10183954																				
				clear	78 %	-	-	10184579																				

Beam angle				Cover	LOR	Order number																						
Very Wide Flood						white	silver	black																				
<table border="1"> <thead> <tr> <th colspan="4">Optik 85 - VFL</th> </tr> <tr> <th>Höhe [m]</th> <th>KegelØ [cm]</th> <th>E(0°) [lx/klm]</th> <th>E(C0) [lx/klm]</th> </tr> </thead> <tbody> <tr> <td>1</td> <td>111</td> <td>1067</td> <td>360</td> </tr> <tr> <td>2</td> <td>223</td> <td>267</td> <td>90</td> </tr> <tr> <td>3</td> <td>334</td> <td>119</td> <td>40</td> </tr> </tbody> </table>				Optik 85 - VFL				Höhe [m]	KegelØ [cm]	E(0°) [lx/klm]	E(C0) [lx/klm]	1	111	1067	360	2	223	267	90	3	334	119	40					
Optik 85 - VFL																												
Höhe [m]	KegelØ [cm]	E(0°) [lx/klm]	E(C0) [lx/klm]																									
1	111	1067	360																									
2	223	267	90																									
3	334	119	40																									
				without	82 %	-	-	10183955																				
				clear	78 %	-	-	10184580																				

Technical details as well as weight specifications and measurements have been prepared with care. Errors excepted. All dimensions in mm · LED service life data: L80/B10 at ambient temperature (ta) 25°C. Rated lamp service life 50,000h. Luminous flux and efficiency specifications are subject to a tolerance of +/- 10%. Min CRI Ra: >80 / >90 · Product images are used as an example and may differ from the original · We reserve the right to make changes, insofar as they serve progress. Oktalite Lichttechnik GmbH · Mathias-Brüggen-Str. 73 · 50829 Cologne · T +49 221 59767-0 · F +49 221 59767-40 · mail@oktalite.com · www.oktalite.com · 2020-09-28