



LOBU

TRACK LIGHT

LOBU brings reduced luminaire design in a small structural shape with powerful lighting characteristics onto the sales floor. The best possible light distribution in every tilted position systematically sets the scene for the goods. Colour combination possibilities for the housing and the reflector ring provide design freedom for more individuality.



High mobility

Can be tilted through 220° and turned through up to 355°



Efficient power package

Large lumen package with low size



Optional design

Front ring optionally in black available



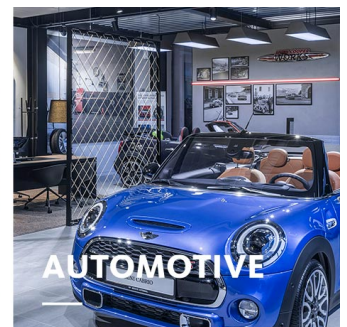
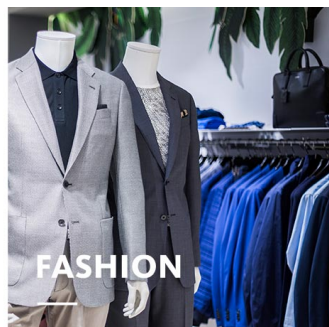
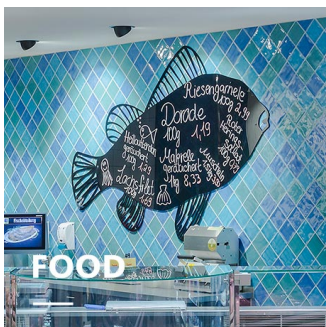
Five reflectors

Five different segmented reflectors for optimum light distribution



Smart lighting







LED^{IO} for intelligent lighting management



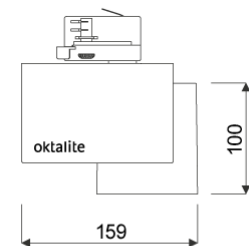
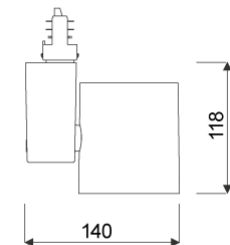
LOBU

oktalite

www.oktalite.com/lobu-t

Type of luminaire	track light
Application areas	Accent lighting
Pan/tilt range	355° turning range, 220° swivel range
Mounting	3P Power Track, not suitable for vertical mounting
Lighting technology	LED
LED Luminous Flux Class	1500 lm - 4000 lm
Light colour White	2700 K, 3000 K, 3000 K - Efficient White, 3000 K - Brilliant Colour, 3500 K, 4000 K
Light colour Food*	M, M+F, BF
Cooling	passive
Supply unit	Driver integrated
Luminaire colour	RAL 9005 jet black RAL 9006 white aluminium RAL 9016 traffic white Special colours on request
Surface	structure powder-coated
Nominal voltage	220 - 240 V, 50/60Hz
Lighting controls	on request
Weight	Approx. 1.3 kg
Components	 Luminaire housing  Optic
Test seal	   

* M = Meat,
M = Meat, F = Fish,
BF = Brilliant Food



Technical details as well as weight specifications and measurements have been prepared with care. Errors excepted. All dimensions in mm · LED service life data: L80/B10 at ambient temperature (ta) 25°C. Rated lamp service life 50,000h. Luminous flux and efficiency specifications are subject to a tolerance of +/- 10%. Min CRI Ra: >80 / >90 · Product images are used as an example and may differ from the original · We reserve the right to make changes, insofar as they serve progress. Oktalite Lichttechnik GmbH · Mathias-Brüggen-Str. 73 · 50829 Cologne · T +49 221 59767-0 · F +49 221 59767-40 · mail@oktalite.com · www.oktalite.com · 2020-10-01

**LOBU****oktalite**

LED Luminous Flux Class	Light colour	CRI R _a	system luminous flux*	System performance	Order number		
					white	silver	black
2000 lm	3000 K - Efficient White	94	1895 lm	17 W	10198507	10198508	10198509
	3000 K - Brilliant Colour	97	1780 lm	21 W	10198510	10198511	10198512
3000 lm	2700 K	81	2680 lm	23 W	10198513	10198514	10198515
	3000 K	83	2790 lm	23 W	10198516	10198517	10198518
	3000 K - Efficient White	94	2740 lm	27 W	10198525	10198526	10198527
	3000 K - Brilliant Colour	97	2630 lm	35 W	10198531	10198532	10198533
	3500 K	84	2845 lm	23 W	10198519	10198520	10198521
	4000 K	83	2900 lm	23 W	10198522	10198523	10198524
4000 lm	2700 K	81	3370 lm	31 W	10198534	10198535	10198536
	3000 K	83	3510 lm	31 W	10198537	10198538	10198539
	3000 K - Efficient White	94	3460 lm	37 W	10198528	10198529	10198530
	3500 K	84	3580 lm	31 W	10198540	10198541	10198542
	4000 K	83	3650 lm	31 W	10198543	10198544	10198545
1500 lm	M	-	1355 lm	23 W	10198486	10198487	10198488
	M+F	-	1280 lm	23 W	10198492	10198493	10198494
2000 lm	M	-	1705 lm	31 W	10198489	10198490	10198491
	M+F	-	1610 lm	31 W	10198495	10198496	10198497
	BF	-	1695 lm	19 W	10198498	10198499	10198500
3000 lm	BF	-	2490 lm	31 W	10198501	10198502	10198503
4000 lm	BF	-	3035 lm	41 W	10198504	10198505	10198506

* System luminous flux based on medium flood reflector.



Efficient White: R₉ = 75, R_r = 91, R_g = 102



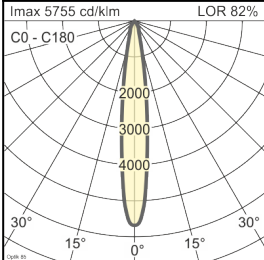
Brilliant Colour: R₉ = 94, R_r = 95, R_g = 104

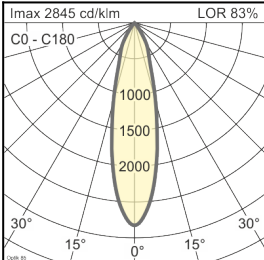
Technical details as well as weight specifications and measurements have been prepared with care. Errors excepted. All dimensions in mm · LED service life data: L80/B10 at ambient temperature (ta) 25°C. Rated lamp service life 50,000h. Luminous flux and efficiency specifications are subject to a tolerance of +/- 10%. Min CRI Ra: >80 / >90 · Product images are used as an example and may differ from the original · We reserve the right to make changes, insofar as they serve progress. Oktalite Lichttechnik GmbH · Mathias-Brüggen-Str. 73 · 50829 Cologne · T +49 221 59767-0 · F +49 221 59767-40 · mail@oktalite.com · www.oktalite.com · 2020-10-01

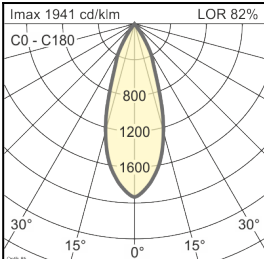
Optic 85 - LED

oktalite

Optic 3D faceted reflectors
 Type interchangeable reflector system

Beam angle				Cover	LOR	Order number																							
Spot						white	silver	black																					
Optik 85 - SP <table border="1"> <thead> <tr> <th>Höhe [m]</th> <th>KegelØ [cm]</th> <th>E(0°) [lx/klm]</th> <th>E(C0) [lx/klm]</th> </tr> </thead> <tbody> <tr> <td>1</td> <td>26</td> <td>5755</td> <td>2841</td> </tr> <tr> <td>2</td> <td>52</td> <td>1439</td> <td>710</td> </tr> <tr> <td>3</td> <td>78</td> <td>639</td> <td>316</td> </tr> </tbody> </table>				Höhe [m]	KegelØ [cm]	E(0°) [lx/klm]	E(C0) [lx/klm]	1	26	5755	2841	2	52	1439	710	3	78	639	316						without	82 %	-	-	10183944
Höhe [m]	KegelØ [cm]	E(0°) [lx/klm]	E(C0) [lx/klm]																										
1	26	5755	2841																										
2	52	1439	710																										
3	78	639	316																										
				clear	78 %	-	-		10184576																				

Beam angle				Cover	LOR	Order number																							
Medium Flood						white	silver	black																					
Optik 85 - MF <table border="1"> <thead> <tr> <th>Höhe [m]</th> <th>KegelØ [cm]</th> <th>E(0°) [lx/klm]</th> <th>E(C0) [lx/klm]</th> </tr> </thead> <tbody> <tr> <td>1</td> <td>45</td> <td>2845</td> <td>1321</td> </tr> <tr> <td>2</td> <td>91</td> <td>711</td> <td>330</td> </tr> <tr> <td>3</td> <td>136</td> <td>316</td> <td>147</td> </tr> </tbody> </table>				Höhe [m]	KegelØ [cm]	E(0°) [lx/klm]	E(C0) [lx/klm]	1	45	2845	1321	2	91	711	330	3	136	316	147						without	83 %	-	-	10183959
Höhe [m]	KegelØ [cm]	E(0°) [lx/klm]	E(C0) [lx/klm]																										
1	45	2845	1321																										
2	91	711	330																										
3	136	316	147																										
				clear	79 %	-	-		10184577																				

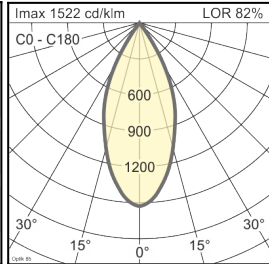
Beam angle				Cover	LOR	Order number																							
Flood						white	silver	black																					
Optik 85 - FL <table border="1"> <thead> <tr> <th>Höhe [m]</th> <th>KegelØ [cm]</th> <th>E(0°) [lx/klm]</th> <th>E(C0) [lx/klm]</th> </tr> </thead> <tbody> <tr> <td>1</td> <td>66</td> <td>1941</td> <td>832</td> </tr> <tr> <td>2</td> <td>132</td> <td>485</td> <td>208</td> </tr> <tr> <td>3</td> <td>197</td> <td>216</td> <td>92</td> </tr> </tbody> </table>				Höhe [m]	KegelØ [cm]	E(0°) [lx/klm]	E(C0) [lx/klm]	1	66	1941	832	2	132	485	208	3	197	216	92						without	82 %	-	-	10183953
Höhe [m]	KegelØ [cm]	E(0°) [lx/klm]	E(C0) [lx/klm]																										
1	66	1941	832																										
2	132	485	208																										
3	197	216	92																										
				clear	78 %	-	-		10184578																				

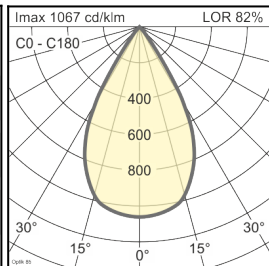
Technical details as well as weight specifications and measurements have been prepared with care. Errors excepted. All dimensions in mm · LED service life data: L80/B10 at ambient temperature (ta) 25°C. Rated lamp service life 50,000h. Luminous flux and efficiency specifications are subject to a tolerance of +/- 10%. Min CRI Ra: >80 / >90 · Product images are used as an example and may differ from the original · We reserve the right to make changes, insofar as they serve progress. Oktalite Lichttechnik GmbH · Mathias-Brüggen-Str. 73 · 50829 Cologne · T +49 221 59767-0 · F +49 221 59767-40 · mail@oktalite.com · www.oktalite.com · 2020-10-01

Optic 85 - LED

oktalite

Optic 3D faceted reflectors
 Type interchangeable reflector system

Beam angle				Cover	LOR	Order number																							
Wide Flood						white	silver	black																					
Optik 85 - WFL <table border="1"> <thead> <tr> <th>Höhe [m]</th> <th>KegelØ [cm]</th> <th>E(0°) [lx/klm]</th> <th>E(C0) [lx/klm]</th> </tr> </thead> <tbody> <tr> <td>1</td> <td>83</td> <td>1522</td> <td>601</td> </tr> <tr> <td>2</td> <td>167</td> <td>381</td> <td>150</td> </tr> <tr> <td>3</td> <td>250</td> <td>169</td> <td>67</td> </tr> </tbody> </table>				Höhe [m]	KegelØ [cm]	E(0°) [lx/klm]	E(C0) [lx/klm]	1	83	1522	601	2	167	381	150	3	250	169	67						without	82 %	-	-	10183954
Höhe [m]	KegelØ [cm]	E(0°) [lx/klm]	E(C0) [lx/klm]																										
1	83	1522	601																										
2	167	381	150																										
3	250	169	67																										
				clear	78 %	-	-	10184579																					

Beam angle				Cover	LOR	Order number																							
Very Wide Flood						white	silver	black																					
Optik 85 - VFL <table border="1"> <thead> <tr> <th>Höhe [m]</th> <th>KegelØ [cm]</th> <th>E(0°) [lx/klm]</th> <th>E(C0) [lx/klm]</th> </tr> </thead> <tbody> <tr> <td>1</td> <td>111</td> <td>1067</td> <td>360</td> </tr> <tr> <td>2</td> <td>223</td> <td>267</td> <td>90</td> </tr> <tr> <td>3</td> <td>334</td> <td>119</td> <td>40</td> </tr> </tbody> </table>				Höhe [m]	KegelØ [cm]	E(0°) [lx/klm]	E(C0) [lx/klm]	1	111	1067	360	2	223	267	90	3	334	119	40						without	82 %	-	-	10183955
Höhe [m]	KegelØ [cm]	E(0°) [lx/klm]	E(C0) [lx/klm]																										
1	111	1067	360																										
2	223	267	90																										
3	334	119	40																										
				clear	78 %	-	-	10184580																					

Technical details as well as weight specifications and measurements have been prepared with care. Errors excepted. All dimensions in mm · LED service life data: L80/B10 at ambient temperature (ta) 25°C. Rated lamp service life 50,000h. Luminous flux and efficiency specifications are subject to a tolerance of +/- 10%. Min CRI Ra: >80 / >90 · Product images are used as an example and may differ from the original · We reserve the right to make changes, insofar as they serve progress. Oktalite Lichttechnik GmbH · Mathias-Brüggen-Str. 73 · 50829 Cologne · T +49 221 59767-0 · F +49 221 59767-40 · mail@oktalite.com · www.oktalite.com · 2020-10-01