



KALO PLUS

TRACK LIGHT

The maxi version of the track-mounted LED spotlight KALO distinguished with the Red Dot Award in 2019 introduces even more possibilities into room illumination. In this case, KALO PLUS yields an extremely convincing lighting performance especially in the case of high-ceilinged rooms. In its ideal areas of use, food and fashion or also automotive, it additionally wins points with its simple design that adapts to any furnishing or equipment.



No ceiling brightening

Light-proof housing with partially external cooling fins



Customized goods illumination

Five interchangeable reflectors that can be changed without tools



High flexibility

Turning through 355°, tilting through 180°



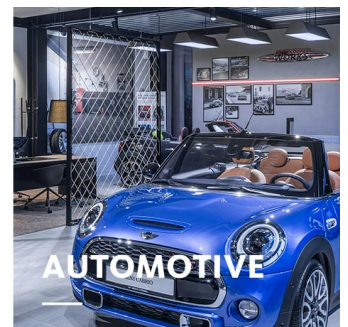
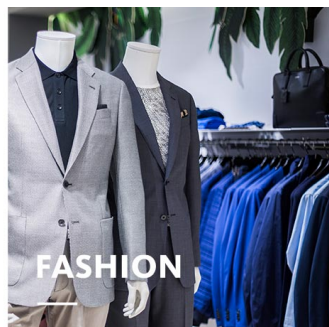
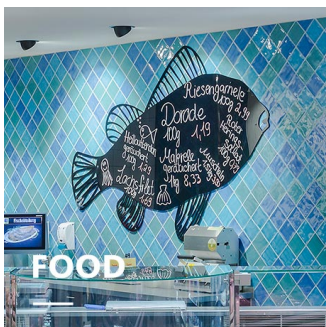
Large LED selection

Six white light colours and three special light colours for the fresh food area are there to choose from



Smart lighting






Smart lighting management optionally with control line or wireless

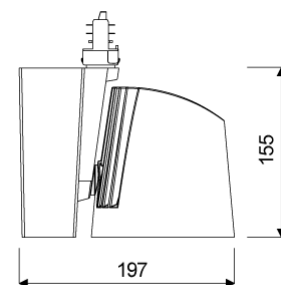
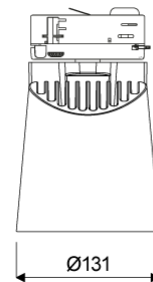


KALO PLUS

oktalite

www.oktalite.com/kalo-plus-t

Type of luminaire	track light
Application areas	Accent lighting
Pan/tilt range	355° turning range, 180° swivel range
Mounting	3P Power Track, not suitable for vertical mounting
Lighting technology	LED ^{IQ} BLE
LED Luminous Flux Class	2000 lm - 5000 lm
Light colour White	2700 K, 3000 K, 3000 K - Efficient White, 3000 K - Brilliant Colour, 3500 K, 4000 K
Light colour Food*	M, M+F, BF
Cooling	passive
Supply unit	BLE-Driver integrated
Luminaire colour	RAL 9005 jet black RAL 9006 white aluminium RAL 9016 traffic white Special colours on request
Surface	structure powder-coated
Nominal voltage	220 - 240 V, 50/60Hz
Lighting controls	Bluetooth Low Energy
Installation	Recommended for modernization or new installation. In a BLE network up to 127 luminaires can be coupled. A stable Bluetooth connection depends on the particular local situation. In the case of this luminaire type it amounts to up to 15 m.
Weight	Approx. 2.0 kg
Components	 Luminaire housing  Optic
Test seal	   * M = Meat, M = Meat, F = Fish, BF = Brilliant Food



Technical details as well as weight specifications and measurements have been prepared with care. Errors excepted. All dimensions in mm · LED service life data: L80/B10 at ambient temperature (ta) 25°C. Rated lamp service life 50,000h. Luminous flux and efficiency specifications are subject to a tolerance of +/- 10%. Min CRI Ra: >80 / >90 · Product images are used as an example and may differ from the original · We reserve the right to make changes, insofar as they serve progress. Oktalite Lichttechnik GmbH · Mathias-Brüggen-Str. 73 · 50829 Cologne · T +49 221 59767-0 · F +49 221 59767-40 · mail@oktalite.com · www.oktalite.com · 2020-11-26



KALO PLUS

oktalite

LED Luminous Flux Class	Light colour	CRI R _a	system luminous flux*	System performance	max. luminaires B16	Order number		
						white	silver	black
3000 lm	3000 K - Brilliant Colour	97	2915 lm	32 W	50	10208014	10208015	10208016
4000 lm	3000 K - Efficient White	94	3865 lm	34 W	50	10208023	10208024	10208025
5000 lm	2700 K	81	4495 lm	36 W	50	10208017	10208018	10208019
	3000 K	83	4620 lm	36 W	50	10208020	10208021	10208022
	3500 K	84	4715 lm	36 W	50	10208026	10208027	10208028
	4000 K	83	4870 lm	36 W	50	10208029	10208030	10208031
2000 lm	M	-	2020 lm	30 W	50	10208035	10208036	10208037
	M+F	-	1880 lm	30 W	50	10208038	10208039	10208040
3000 lm	BF	98	2835 lm	30 W	50	10208032	10208033	10208034

Accessories	Order number
Energy self-sufficient 4-way push-button, white	10195262
4-way pushbutton coupler for recessed and surface-mounted boxes	10195263
Motion and brightness sensor with 2 m cable and Europlug	10195264
Motion and brightness sensor with integrated safety socket, white	10195265
Suction lifter	10206417

* System luminous flux based on medium flood reflector.



Efficient White: R₉ = 75, R_f = 91, R_g = 102



Brilliant Colour: R₉ = 94, R_f = 95, R_g = 104

Technical details as well as weight specifications and measurements have been prepared with care. Errors excepted. All dimensions in mm · LED service life data: L80/B10 at ambient temperature (ta) 25°C. Rated lamp service life 50,000h. Luminous flux and efficiency specifications are subject to a tolerance of +/- 10%. Min CRI Ra: >80 / >90 · Product images are used as an example and may differ from the original · We reserve the right to make changes, insofar as they serve progress. Oktalite Lichttechnik GmbH · Mathias-Brüggen-Str. 73 · 50829 Cologne · T +49 221 59767-0 · F +49 221 59767-40 · mail@oktalite.com · www.oktalite.com · 2020-11-26

Optic 122 - LED IQ BLE

oktalite

Optic 3D faceted reflectors
 Type interchangeable reflector system

Beam angle				Cover	LOR	Order number		
Spot						white	silver	black
Kalo Plus - SP				without	87 %	-	-	10196971
				clear	83 %	-	-	10196966
Höhe [m]	KegelØ [cm]	E(0°) [lx/klm]	E(C0) [lx/klm]					
1	24	6842	3367					
2	48	1711	842					
3	73	760	374					

Beam angle				Cover	LOR	Order number		
Medium Flood						white	silver	black
Kalo Plus - MF				without	88 %	-	-	10196972
				clear	84 %	-	-	10196967
Höhe [m]	KegelØ [cm]	E(0°) [lx/klm]	E(C0) [lx/klm]					
1	43	3357	1573					
2	85	839	393					
3	128	373	175					

Beam angle				Cover	LOR	Order number		
Flood						white	silver	black
Kalo Plus - FL				without	87 %	-	-	10196973
				clear	83 %	-	-	10196968
Höhe [m]	KegelØ [cm]	E(0°) [lx/klm]	E(C0) [lx/klm]					
1	66	1981	857					
2	132	495	214					
3	197	220	95					

Technical details as well as weight specifications and measurements have been prepared with care. Errors excepted. All dimensions in mm · LED service life data: L80/B10 at ambient temperature (ta) 25°C. Rated lamp service life 50,000h. Luminous flux and efficiency specifications are subject to a tolerance of +/- 10%. Min CRI Ra: >80 / >90 · Product images are used as an example and may differ from the original · We reserve the right to make changes, insofar as they serve progress. Oktalite Lichttechnik GmbH · Mathias-Brüggen-Str. 73 · 50829 Cologne · T +49 221 59767-0 · F +49 221 59767-40 · mail@oktalite.com · www.oktalite.com · 2020-11-26

Optic 122 - LED IQ BLE

oktalite

Optic 3D faceted reflectors
 Type interchangeable reflector system

Beam angle				Cover	LOR	Order number																							
Wide Flood						white	silver	black																					
Kalo Plus - WFL <table border="1"> <thead> <tr> <th>Höhe [m]</th> <th>KegelØ [cm]</th> <th>E(0°) [lx/klm]</th> <th>E(C0) [lx/klm]</th> </tr> </thead> <tbody> <tr> <td>1</td> <td>87</td> <td>1437</td> <td>554</td> </tr> <tr> <td>2</td> <td>175</td> <td>359</td> <td>139</td> </tr> <tr> <td>3</td> <td>262</td> <td>160</td> <td>62</td> </tr> </tbody> </table>				Höhe [m]	KegelØ [cm]	E(0°) [lx/klm]	E(C0) [lx/klm]	1	87	1437	554	2	175	359	139	3	262	160	62						without	87 %	-	-	10196974
Höhe [m]	KegelØ [cm]	E(0°) [lx/klm]	E(C0) [lx/klm]																										
1	87	1437	554																										
2	175	359	139																										
3	262	160	62																										
				clear	83 %	-	-	10196969																					

Beam angle				Cover	LOR	Order number																							
Very Wide Flood						white	silver	black																					
Kalo Plus - VFL <table border="1"> <thead> <tr> <th>Höhe [m]</th> <th>KegelØ [cm]</th> <th>E(0°) [lx/klm]</th> <th>E(C0) [lx/klm]</th> </tr> </thead> <tbody> <tr> <td>1</td> <td>117</td> <td>1027</td> <td>333</td> </tr> <tr> <td>2</td> <td>235</td> <td>257</td> <td>83</td> </tr> <tr> <td>3</td> <td>352</td> <td>114</td> <td>37</td> </tr> </tbody> </table>				Höhe [m]	KegelØ [cm]	E(0°) [lx/klm]	E(C0) [lx/klm]	1	117	1027	333	2	235	257	83	3	352	114	37						without	87 %	-	-	10196975
Höhe [m]	KegelØ [cm]	E(0°) [lx/klm]	E(C0) [lx/klm]																										
1	117	1027	333																										
2	235	257	83																										
3	352	114	37																										
				clear	83 %	-	-	10196970																					

Technical details as well as weight specifications and measurements have been prepared with care. Errors excepted. All dimensions in mm · LED service life data: L80/B10 at ambient temperature (ta) 25°C. Rated lamp service life 50,000h. Luminous flux and efficiency specifications are subject to a tolerance of +/- 10%. Min CRI Ra: >80 / >90 · Product images are used as an example and may differ from the original · We reserve the right to make changes, insofar as they serve progress. Oktalite Lichttechnik GmbH · Mathias-Brüggen-Str. 73 · 50829 Cologne · T +49 221 59767-0 · F +49 221 59767-40 · mail@oktalite.com · www.oktalite.com · 2020-11-26