



## KALO PLUS

TRACK LIGHT

The maxi version of the track-mounted LED spotlight KALO distinguished with the Red Dot Award in 2019 introduces even more possibilities into room illumination. In this case, KALO PLUS yields an extremely convincing lighting performance especially in the case of high-ceilinged rooms. In its ideal areas of use, food and fashion or also automotive, it additionally wins points with its simple design that adapts to any furnishing or equipment.



### No ceiling brightening

Light-proof housing with partially external cooling fins



### Customized goods illumination

Five interchangeable reflectors that can be changed without tools



### High flexibility

Turning through 355°, tilting through 180°



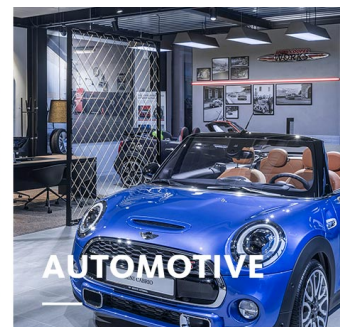
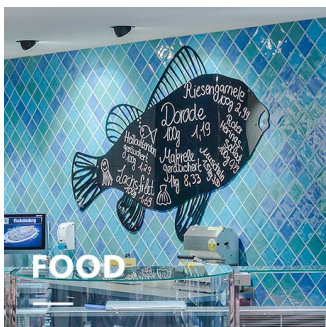
### Large LED selection

Six white light colours and three special light colours for the fresh food area are there to choose from



### Smart lighting

Smart lighting management optionally with control line or wireless

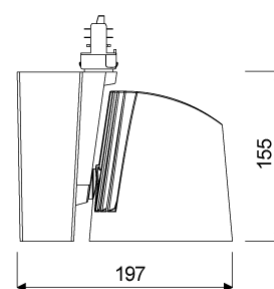
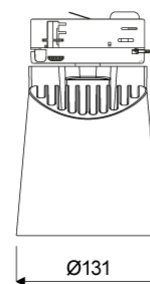




# KALO PLUS

# oktalite

[www.oktalite.com/kalo-plus-t](http://www.oktalite.com/kalo-plus-t)

Type of luminaire	track light
Application areas	Accent lighting
Pan/tilt range	355° turning range, 180° swivel range
Mounting	3P Power Track Typ Global DALI, not suitable for vertical mounting
Lighting technology	LED <sup>IQ</sup> DALI
LED Luminous Flux Class	3000 lm - 5000 lm
Light colour White	2700 K, 3000 K, 3000 K - Efficient White, 3000 K - Brilliant Colour, 3500 K, 4000 K
Light colour Food*	M, M+F, BF
Cooling	passive
Supply unit	DALI driver integrated
Luminaire colour	RAL 9005 jet black RAL 9006 white aluminium RAL 9016 traffic white Special colours on request
Surface	structure powder-coated
Nominal voltage	220 - 240 V, 50/60Hz
Lighting controls	DALI DT6
Installation	Recommended for new installation.
Weight	Approx. 2.0 kg
Components	
Test seal	



-  Luminaire housing
-  Optic



\* M = Meat,  
M = Meat, F = Fish,  
BF = Brilliant Food

Technical details as well as weight specifications and measurements have been prepared with care. Errors excepted. All dimensions in mm · LED service life data: L80/B10 at ambient temperature (ta) 25°C. Rated lamp service life 50,000h. Luminous flux and efficiency specifications are subject to a tolerance of +/- 10%. Min CRI Ra: >80 / >90 · Product images are used as an example and may differ from the original · We reserve the right to make changes, insofar as they serve progress. Oktalite Lichttechnik GmbH · Mathias-Brüggen-Str. 73 · 50829 Cologne · T +49 221 59767-0 · F +49 221 59767-40 · mail@oktalite.com · www.oktalite.com · 2020-11-26

**KALO PLUS****oktalite**

LED Luminous Flux Class	Light colour	CRI R <sub>a</sub>	system luminous flux*	System performance	max. luminaires B16	Order number		
						white	silver	black
4000 lm	3000 K - Brilliant Colour	97	3860 lm	46 W	20	10207269	10207270	10207271
5000 lm	2700 K	81	4495 lm	36 W	50	10207272	10207273	10207274
	3000 K	83	4620 lm	36 W	50	10207275	10207298	10207299
	3000 K - Efficient White	94	4875 lm	46 W	20	10207300	10207301	10207302
	3500 K	84	4715 lm	36 W	50	10207303	10207304	10207305
	4000 K	83	4870 lm	36 W	50	10207306	10207307	10207308
3000 lm	M	-	2810 lm	46 W	20	10207312	10207313	10207314
	M+F	-	2615 lm	46 W	20	10207315	10207316	10207317
4000 lm	BF	98	3555 lm	40 W	50	10213408	10213409	10213410

**Accessories****Order number**

Suction lifter

10206417

\* System luminous flux based on medium flood reflector.

Efficient White: R<sub>s</sub> = 75, R<sub>r</sub> = 91, R<sub>g</sub> = 102Brilliant Colour: R<sub>s</sub> = 94, R<sub>r</sub> = 95, R<sub>g</sub> = 104

Technical details as well as weight specifications and measurements have been prepared with care. Errors excepted. All dimensions in mm · LED service life data: L80/B10 at ambient temperature (ta) 25°C. Rated lamp service life 50,000h. Luminous flux and efficiency specifications are subject to a tolerance of +/- 10%. Min CRI Ra: >80 / >90 · Product images are used as an example and may differ from the original · We reserve the right to make changes, insofar as they serve progress. Oktalite Lichttechnik GmbH · Mathias-Brüggen-Str. 73 · 50829 Cologne · T +49 221 59767-0 · F +49 221 59767-40 · mail@oktalite.com · www.oktalite.com · 2020-11-26

# Optic 122 - LED IQ DALI

# oktalite

Optic 3D faceted reflectors  
Type interchangeable reflector system

Beam angle				Cover	LOR	Order number																		
Spot						white	silver	black																
<b>Kalo Plus - SP</b>				without	87 %	-	-	10196971																
<table border="1"> <thead> <tr> <th>Höhe [m]</th> <th>KegelØ [cm]</th> <th>E(0°) [lx/klm]</th> <th>E(C0) [lx/klm]</th> </tr> </thead> <tbody> <tr> <td>1</td> <td>24</td> <td>6842</td> <td>3367</td> </tr> <tr> <td>2</td> <td>48</td> <td>1711</td> <td>842</td> </tr> <tr> <td>3</td> <td>73</td> <td>760</td> <td>374</td> </tr> </tbody> </table>				Höhe [m]	KegelØ [cm]	E(0°) [lx/klm]	E(C0) [lx/klm]	1	24	6842	3367	2	48	1711	842	3	73	760	374	clear	83 %	-	-	10196966
Höhe [m]	KegelØ [cm]	E(0°) [lx/klm]	E(C0) [lx/klm]																					
1	24	6842	3367																					
2	48	1711	842																					
3	73	760	374																					

Beam angle				Cover	LOR	Order number																		
Medium Flood						white	silver	black																
<b>Kalo Plus - MF</b>				without	88 %	-	-	10196972																
<table border="1"> <thead> <tr> <th>Höhe [m]</th> <th>KegelØ [cm]</th> <th>E(0°) [lx/klm]</th> <th>E(C0) [lx/klm]</th> </tr> </thead> <tbody> <tr> <td>1</td> <td>43</td> <td>3357</td> <td>1573</td> </tr> <tr> <td>2</td> <td>85</td> <td>839</td> <td>393</td> </tr> <tr> <td>3</td> <td>128</td> <td>373</td> <td>175</td> </tr> </tbody> </table>				Höhe [m]	KegelØ [cm]	E(0°) [lx/klm]	E(C0) [lx/klm]	1	43	3357	1573	2	85	839	393	3	128	373	175	clear	84 %	-	-	10196967
Höhe [m]	KegelØ [cm]	E(0°) [lx/klm]	E(C0) [lx/klm]																					
1	43	3357	1573																					
2	85	839	393																					
3	128	373	175																					

Beam angle				Cover	LOR	Order number																		
Flood						white	silver	black																
<b>Kalo Plus - FL</b>				without	87 %	-	-	10196973																
<table border="1"> <thead> <tr> <th>Höhe [m]</th> <th>KegelØ [cm]</th> <th>E(0°) [lx/klm]</th> <th>E(C0) [lx/klm]</th> </tr> </thead> <tbody> <tr> <td>1</td> <td>66</td> <td>1981</td> <td>857</td> </tr> <tr> <td>2</td> <td>132</td> <td>495</td> <td>214</td> </tr> <tr> <td>3</td> <td>197</td> <td>220</td> <td>95</td> </tr> </tbody> </table>				Höhe [m]	KegelØ [cm]	E(0°) [lx/klm]	E(C0) [lx/klm]	1	66	1981	857	2	132	495	214	3	197	220	95	clear	83 %	-	-	10196968
Höhe [m]	KegelØ [cm]	E(0°) [lx/klm]	E(C0) [lx/klm]																					
1	66	1981	857																					
2	132	495	214																					
3	197	220	95																					

Technical details as well as weight specifications and measurements have been prepared with care. Errors excepted. All dimensions in mm · LED service life data: L80/B10 at ambient temperature (ta) 25°C. Rated lamp service life 50,000h. Luminous flux and efficiency specifications are subject to a tolerance of +/- 10%. Min CRI Ra: >80 / >90 · Product images are used as an example and may differ from the original · We reserve the right to make changes, insofar as they serve progress. Oktalite Lichttechnik GmbH · Mathias-Brüggen-Str. 73 · 50829 Cologne · T +49 221 59767-0 · F +49 221 59767-40 · mail@oktalite.com · www.oktalite.com · 2020-11-26



# Optic 122 - LED IQ DALI

# oktalite

Optic 3D faceted reflectors  
Type interchangeable reflector system

Beam angle				Cover	LOR	Order number		
Wide Flood						white	silver	black
<b>Kalo Plus - WFL</b>								
Höhe [m]	KegelØ [cm]	E(0°) [lx/klm]	E(C0) [lx/klm]					
1	87	1437	554	without	87 %	-	-	10196974
2	175	359	139	clear	83 %	-	-	10196969
3	262	160	62					

Beam angle				Cover	LOR	Order number		
Very Wide Flood						white	silver	black
<b>Kalo Plus - VFL</b>								
Höhe [m]	KegelØ [cm]	E(0°) [lx/klm]	E(C0) [lx/klm]					
1	117	1027	333	without	87 %	-	-	10196975
2	235	257	83	clear	83 %	-	-	10196970
3	352	114	37					

Technical details as well as weight specifications and measurements have been prepared with care. Errors excepted. All dimensions in mm · LED service life data: L80/B10 at ambient temperature (ta) 25°C. Rated lamp service life 50,000h. Luminous flux and efficiency specifications are subject to a tolerance of +/- 10%. Min CRI Ra: >80 / >90 · Product images are used as an example and may differ from the original · We reserve the right to make changes, insofar as they serve progress. Oktalite Lichttechnik GmbH · Mathias-Brüggen-Str. 73 · 50829 Cologne · T +49 221 59767-0 · F +49 221 59767-40 · mail@oktalite.com · www.oktalite.com · 2020-11-26