



KALO PLUS

TRACK LIGHT

The maxi version of the track-mounted LED spotlight KALO distinguished with the Red Dot Award in 2019 introduces even more possibilities into room illumination. In this case, KALO PLUS yields an extremely convincing lighting performance especially in the case of high-ceilinged rooms. In its ideal areas of use, food and fashion or also automotive, it additionally wins points with its simple design that adapts to any furnishing or equipment.



No ceiling brightening

Light-proof housing with partially external cooling fins



Customized goods illumination

Five interchangeable reflectors that can be changed without tools



High flexibility

Turning through 355°, tilting through 180°



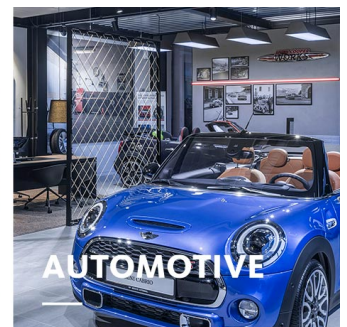
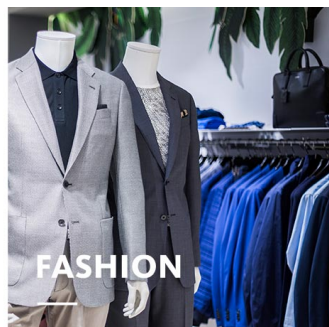
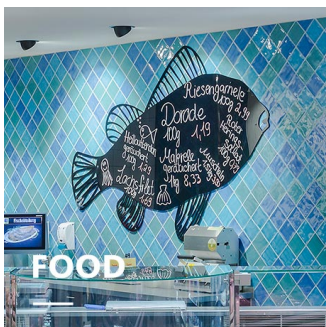
Large LED selection

Six white light colours and three special light colours for the fresh food area are there to choose from



Smart lighting



Smart lighting management optionally with control line or wireless



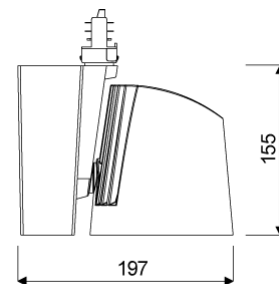
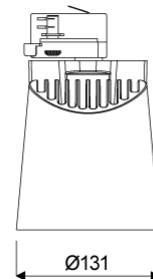
KALO PLUS

oktalite

www.oktalite.com/kalo-plus-t

Type of luminaire	track light
Application areas	Accent lighting
Pan/tilt range	355° turning range, 180° swivel range
Mounting	3P Power Track, not suitable for vertical mounting
Lighting technology	LED
LED Luminous Flux Class	1500 lm - 5000 lm
Light colour White	2700 K, 3000 K, 3000 K - Efficient White, 3000 K - Brilliant Colour, 3500 K, 4000 K
Light colour Food*	M, M+F, BF
Cooling	passive
Supply unit	Driver integrated
Luminaire colour	RAL 9005 jet black RAL 9006 white aluminium RAL 9016 traffic white Special colours on request
Surface	structure powder-coated
Nominal voltage	220 - 240 V, 50/60Hz
Lighting controls	on request
Weight	Approx. 2.0 kg
Components	 Luminaire housing  Optic
Test seal	  

* M = Meat,
M = Meat, F = Fish,
BF = Brilliant Food



Technical details as well as weight specifications and measurements have been prepared with care. Errors excepted. All dimensions in mm · LED service life data: L80/B10 at ambient temperature (ta) 25°C. Rated lamp service life 50,000h. Luminous flux and efficiency specifications are subject to a tolerance of +/- 10%. Min CRI Ra: >80 / >90 · Product images are used as an example and may differ from the original · We reserve the right to make changes, insofar as they serve progress. Oktalite Lichttechnik GmbH · Mathias-Brüggen-Str. 73 · 50829 Cologne · T +49 221 59767-0 · F +49 221 59767-40 · mail@oktalite.com · www.oktalite.com · 2020-11-26

**KALO PLUS****oktalite**

LED Luminous Flux Class	Light colour	CRI R _a	system luminous flux*	System performance	max. luminaires B16	Order number		
						white	silver	black
3000 lm	2700 K	81	2815 lm	21 W	25	10207194	10207195	10207196
	3000 K	83	2895 lm	21 W	25	10207197	10207198	10207199
	3000 K - Efficient White	94	2930 lm	25 W	25	10207200	10207201	10207202
	3000 K - Brilliant Colour	97	2915 lm	32 W	25	10207203	10207204	10207205
	3500 K	84	2950 lm	21 W	25	10207206	10207207	10207208
	4000 K	83	3050 lm	21 W	25	10207209	10207210	10207211
4000 lm	2700 K	81	3685 lm	28 W	25	10207212	10207213	10207214
	3000 K	83	3790 lm	28 W	25	10207215	10207216	10207217
	3000 K - Efficient White	94	3865 lm	34 W	25	10207218	10207219	10207220
	3000 K - Brilliant Colour	97	3860 lm	46 W	30	10207221	10207222	10207223
	3500 K	84	3865 lm	28 W	25	10207224	10207225	10207226
	4000 K	83	3990 lm	28 W	25	10207227	10207228	10207229
5000 lm	2700 K	81	4495 lm	36 W	25	10207230	10207231	10207232
	3000 K	83	4620 lm	36 W	25	10207233	10207234	10207235
	3000 K - Efficient White	94	4875 lm	46 W	30	10207236	10207237	10207238
	3500 K	84	4715 lm	36 W	25	10207239	10207240	10207241
	4000 K	83	4870 lm	36 W	25	10207242	10207243	10207244
1500 lm	M	-	1575 lm	23 W	25	10207245	10207246	10207247
	M+F	-	1465 lm	23 W	25	10207248	10207249	10207250
2000 lm	M	-	2020 lm	30 W	25	10207251	10207252	10207253
	M+F	-	1880 lm	30 W	25	10207254	10207255	10207256
3000 lm	M	-	2810 lm	46 W	30	10207257	10207258	10207259
	M+F	-	2615 lm	46 W	30	10207260	10207261	10207262
	BF	98	2835 lm	30 W	25	10213402	10213403	10213404
4000 lm	BF	98	3555 lm	40 W	23	10213405	10213406	10213407

Accessories**Order number**

Suction lifter

10206417

Technical details as well as weight specifications and measurements have been prepared with care. Errors excepted. All dimensions in mm · LED service life data: L80/B10 at ambient temperature (ta) 25°C. Rated lamp service life 50,000h. Luminous flux and efficiency specifications are subject to a tolerance of +/- 10%. Min CRI Ra: >80 / >90 · Product images are used as an example and may differ from the original · We reserve the right to make changes, insofar as they serve progress. Oktalite Lichttechnik GmbH · Mathias-Brüggen-Str. 73 · 50829 Cologne · T +49 221 59767-0 · F +49 221 59767-40 · mail@oktalite.com · www.oktalite.com · 2020-11-26

* System luminous flux based on medium flood reflector.



Efficient White: $R_9 = 75$, $R_f = 91$, $R_g = 102$



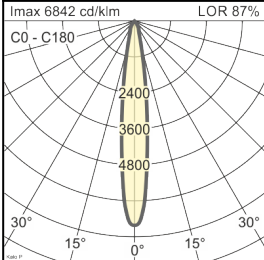
Brilliant Colour: $R_9 = 94$, $R_f = 95$, $R_g = 104$

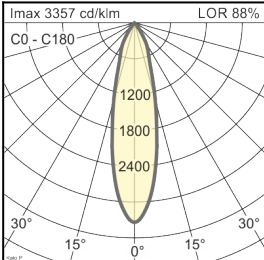
Technical details as well as weight specifications and measurements have been prepared with care. Errors excepted. All dimensions in mm · LED service life data: L80/B10 at ambient temperature (t_a) 25°C. Rated lamp service life 50,000h. Luminous flux and efficiency specifications are subject to a tolerance of +/- 10%. Min CRI Ra: >80 / >90 · Product images are used as an example and may differ from the original · We reserve the right to make changes, insofar as they serve progress. Oktalite Lichttechnik GmbH · Mathias-Brüggen-Str. 73 · 50829 Cologne · T +49 221 59767-0 · F +49 221 59767-40 · mail@oktalite.com · www.oktalite.com · 2020-11-26

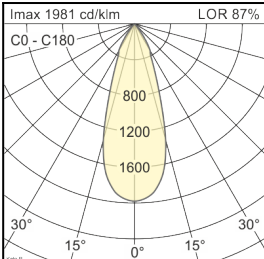
Optic 122 - LED

oktalite

Optic 3D faceted reflectors
 Type interchangeable reflector system

Beam angle				Cover	LOR	Order number		
Spot						white	silver	black
Kalo Plus - SP				without	87 %	-	-	10196971
				clear	83 %	-	-	10196966
Höhe [m]	KegelØ [cm]	E(0°) [lx/klm]	E(C0) [lx/klm]					
1	24	6842	3367					
2	48	1711	842					
3	73	760	374					

Beam angle				Cover	LOR	Order number		
Medium Flood						white	silver	black
Kalo Plus - MF				without	88 %	-	-	10196972
				clear	84 %	-	-	10196967
Höhe [m]	KegelØ [cm]	E(0°) [lx/klm]	E(C0) [lx/klm]					
1	43	3357	1573					
2	85	839	393					
3	128	373	175					

Beam angle				Cover	LOR	Order number		
Flood						white	silver	black
Kalo Plus - FL				without	87 %	-	-	10196973
				clear	83 %	-	-	10196968
Höhe [m]	KegelØ [cm]	E(0°) [lx/klm]	E(C0) [lx/klm]					
1	66	1981	857					
2	132	495	214					
3	197	220	95					

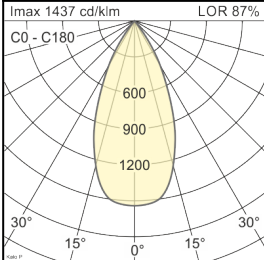
Technical details as well as weight specifications and measurements have been prepared with care. Errors excepted. All dimensions in mm · LED service life data: L80/B10 at ambient temperature (ta) 25°C. Rated lamp service life 50,000h. Luminous flux and efficiency specifications are subject to a tolerance of +/- 10%. Min CRI Ra: >80 / >90 · Product images are used as an example and may differ from the original · We reserve the right to make changes, insofar as they serve progress. Oktalite Lichttechnik GmbH · Mathias-Brüggen-Str. 73 · 50829 Cologne · T +49 221 59767-0 · F +49 221 59767-40 · mail@oktalite.com · www.oktalite.com · 2020-11-26

Optic 122 - LED

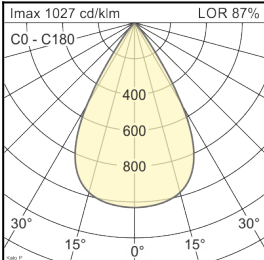
oktalite

Optic 3D faceted reflectors
Type interchangeable reflector system

Beam angle				Cover	LOR	Order number		
Wide Flood						white	silver	black
Kalo Plus - WFL								
Höhe [m]	KegelØ [cm]	E(0°) [lx/klm]	E(C0) [lx/klm]					
1	87	1437	554	without	87 %	-	-	10196974
2	175	359	139	clear	83 %	-	-	10196969
3	262	160	62					



Beam angle				Cover	LOR	Order number		
Very Wide Flood						white	silver	black
Kalo Plus - VFL								
Höhe [m]	KegelØ [cm]	E(0°) [lx/klm]	E(C0) [lx/klm]					
1	117	1027	333	without	87 %	-	-	10196975
2	235	257	83	clear	83 %	-	-	10196970
3	352	114	37					



Technical details as well as weight specifications and measurements have been prepared with care. Errors excepted. All dimensions in mm · LED service life data: L80/B10 at ambient temperature (ta) 25°C. Rated lamp service life 50,000h. Luminous flux and efficiency specifications are subject to a tolerance of +/- 10%. Min CRI Ra: >80 / >90 · Product images are used as an example and may differ from the original · We reserve the right to make changes, insofar as they serve progress. Oktalite Lichttechnik GmbH · Mathias-Brüggen-Str. 73 · 50829 Cologne · T +49 221 59767-0 · F +49 221 59767-40 · mail@oktalite.com · www.oktalite.com · 2020-11-26