



KALO

TRACK LIGHT

Small, efficient, unmistakable: the LED spotlight adapts easily to its area of use. The partly visible cooling fins enhance the plain white design. The ideal all-rounder for all applications.



Manageable size

Also suitable for low-ceilinged rooms or small rooms



Balanced centre of gravity

Suspended power track remains balanced during swivelling-out of the spotlights



Customized illumination of the goods

Replacement of five interchangeable reflectors SP, MF, FL, WFL and VFL



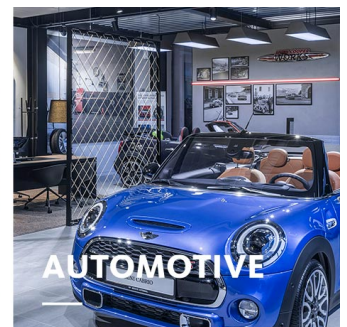
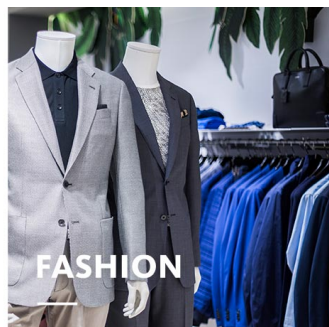
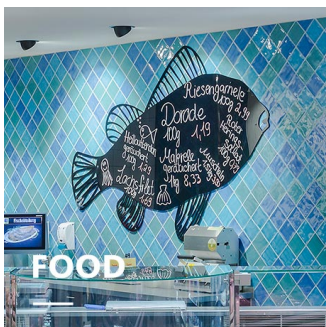
Large selection of LEDs

Six white light colours and three special light colours for the fresh food area can be chosen from









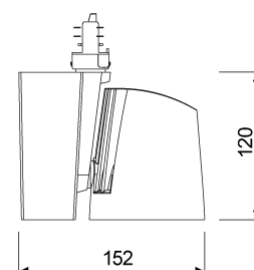
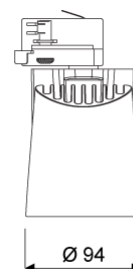
Intelligent light

Smart lighting management optionally with control line or wireless



www.oktalite.com/kalo-t

Type of luminaire	track light
Application areas	Accent lighting
Pan/tilt range	355° turning range, 180° swivel range
Mounting	3P Power Track, not suitable for vertical mounting
Lighting technology	LED ^{IQ} BLE
LED Luminous Flux Class	2000 lm - 4000 lm
Light colour White	2700 K, 3000 K, 3000 K - Efficient White, 3000 K - Brilliant Colour, 3500 K, 4000 K
Light colour Food*	M, M+F, BF
Cooling	passive
Supply unit	BLE-Driver integrated
Luminaire colour	RAL 9005 jet black RAL 9006 white aluminium RAL 9016 traffic white Special colours on request
Surface	structure powder-coated
Nominal voltage	220 - 240 V, 50/60Hz
Lighting controls	Bluetooth Low Energy
Installation	Recommended for modernization or new installation. In a BLE network up to 127 luminaires can be coupled. A stable Bluetooth connection depends on the particular local situation. In the case of this luminaire type it amounts to up to 15 m.
Weight	Approx. 1.2 kg
Components	 Luminaire housing  Optic
Test seal	    * M = Meat, M = Meat, F = Fish, BF = Brilliant Food



Technical details as well as weight specifications and measurements have been prepared with care. Errors excepted. All dimensions in mm · LED service life data: L80/B10 at ambient temperature (ta) 25°C. Rated lamp service life 50,000h. Luminous flux and efficiency specifications are subject to a tolerance of +/- 10%. Min CRI Ra: >80 / >90 · Product images are used as an example and may differ from the original · We reserve the right to make changes, insofar as they serve progress. Oktalite Lichttechnik GmbH · Mathias-Brüggen-Str. 73 · 50829 Cologne · T +49 221 59767-0 · F +49 221 59767-40 · mail@oktalite.com · www.oktalite.com · 2020-11-26

**KALO****oktalite**

LED Luminous Flux Class	Light colour	CRI R _a	system luminous flux*	System performance	max. luminaires B16	Order number		
						white	silver	black
3000 lm	3000 K - Brilliant Colour	97	2630 lm	35 W	50	10207987	10207988	10207989
4000 lm	2700 K	81	3365 lm	31 W	50	10207990	10207991	10207992
	3000 K	83	3505 lm	31 W	50	10207993	10207994	10207995
	3000 K - Efficient White	94	3455 lm	37 W	50	10207996	10207997	10207998
	3500 K	84	3575 lm	31 W	50	10207999	10208000	10208001
2000 lm	4000 K	83	3645 lm	31 W	50	10208002	10208003	10208004
	M	-	1700 lm	31 W	50	10208008	10208009	10208010
3000 lm	M+F	-	1605 lm	31 W	50	10208011	10208012	10208013
	BF	-	2485 lm	31 W	50	10208005	10208006	10208007

Accessories	Order number
Energy self-sufficient 4-way push-button, white	10195262
4-way pushbutton coupler for recessed and surface-mounted boxes	10195263
Motion and brightness sensor with 2 m cable and Europlug	10195264
Motion and brightness sensor with integrated safety socket, white	10195265
Suction lifter	10206417

* System luminous flux based on medium flood reflector.

Efficient White: R_y = 75, R_f = 91, R_g = 102Brilliant Colour: R_y = 94, R_f = 95, R_g = 104

Technical details as well as weight specifications and measurements have been prepared with care. Errors excepted. All dimensions in mm · LED service life data: L80/B10 at ambient temperature (ta) 25°C. Rated lamp service life 50,000h. Luminous flux and efficiency specifications are subject to a tolerance of +/- 10%. Min CRI Ra: >80 / >90 · Product images are used as an example and may differ from the original · We reserve the right to make changes, insofar as they serve progress. Oktalite Lichttechnik GmbH · Mathias-Brüggen-Str. 73 · 50829 Cologne · T +49 221 59767-0 · F +49 221 59767-40 · mail@oktalite.com · www.oktalite.com · 2020-11-26

Optic 85 - LED IQ BLE

oktalite

Optic 3D faceted reflectors
Type interchangeable reflector system

Beam angle				Cover	LOR	Order number																		
Spot						white	silver	black																
Optik 85 - SP				without	82 %	-	-	10183944																
<table border="1"> <thead> <tr> <th>Höhe [m]</th> <th>KegelØ [cm]</th> <th>E(0°) [lx/klm]</th> <th>E(C0) [lx/klm]</th> </tr> </thead> <tbody> <tr> <td>1</td> <td>26</td> <td>5755</td> <td>2841</td> </tr> <tr> <td>2</td> <td>52</td> <td>1439</td> <td>710</td> </tr> <tr> <td>3</td> <td>78</td> <td>639</td> <td>316</td> </tr> </tbody> </table>				Höhe [m]	KegelØ [cm]	E(0°) [lx/klm]	E(C0) [lx/klm]	1	26	5755	2841	2	52	1439	710	3	78	639	316	clear	78 %	-	-	10184576
Höhe [m]	KegelØ [cm]	E(0°) [lx/klm]	E(C0) [lx/klm]																					
1	26	5755	2841																					
2	52	1439	710																					
3	78	639	316																					

Beam angle				Cover	LOR	Order number																		
Medium Flood						white	silver	black																
Optik 85 - MF				without	83 %	-	-	10183959																
<table border="1"> <thead> <tr> <th>Höhe [m]</th> <th>KegelØ [cm]</th> <th>E(0°) [lx/klm]</th> <th>E(C0) [lx/klm]</th> </tr> </thead> <tbody> <tr> <td>1</td> <td>45</td> <td>2845</td> <td>1321</td> </tr> <tr> <td>2</td> <td>91</td> <td>711</td> <td>330</td> </tr> <tr> <td>3</td> <td>136</td> <td>316</td> <td>147</td> </tr> </tbody> </table>				Höhe [m]	KegelØ [cm]	E(0°) [lx/klm]	E(C0) [lx/klm]	1	45	2845	1321	2	91	711	330	3	136	316	147	clear	79 %	-	-	10184577
Höhe [m]	KegelØ [cm]	E(0°) [lx/klm]	E(C0) [lx/klm]																					
1	45	2845	1321																					
2	91	711	330																					
3	136	316	147																					

Beam angle				Cover	LOR	Order number																		
Flood						white	silver	black																
Optik 85 - FL				without	82 %	-	-	10183953																
<table border="1"> <thead> <tr> <th>Höhe [m]</th> <th>KegelØ [cm]</th> <th>E(0°) [lx/klm]</th> <th>E(C0) [lx/klm]</th> </tr> </thead> <tbody> <tr> <td>1</td> <td>66</td> <td>1941</td> <td>832</td> </tr> <tr> <td>2</td> <td>132</td> <td>485</td> <td>208</td> </tr> <tr> <td>3</td> <td>197</td> <td>216</td> <td>92</td> </tr> </tbody> </table>				Höhe [m]	KegelØ [cm]	E(0°) [lx/klm]	E(C0) [lx/klm]	1	66	1941	832	2	132	485	208	3	197	216	92	clear	78 %	-	-	10184578
Höhe [m]	KegelØ [cm]	E(0°) [lx/klm]	E(C0) [lx/klm]																					
1	66	1941	832																					
2	132	485	208																					
3	197	216	92																					

Technical details as well as weight specifications and measurements have been prepared with care. Errors excepted. All dimensions in mm · LED service life data: L80/B10 at ambient temperature (ta) 25°C. Rated lamp service life 50,000h. Luminous flux and efficiency specifications are subject to a tolerance of +/- 10%. Min CRI Ra: >80 / >90 · Product images are used as an example and may differ from the original · We reserve the right to make changes, insofar as they serve progress. Oktalite Lichttechnik GmbH · Mathias-Brüggen-Str. 73 · 50829 Cologne · T +49 221 59767-0 · F +49 221 59767-40 · mail@oktalite.com · www.oktalite.com · 2020-11-26

Optic 85 - LED IQ BLE

oktalite

Optic 3D faceted reflectors
 Type interchangeable reflector system

Beam angle				Cover	LOR	Order number																						
Wide Flood						white	silver	black																				
<table border="1"> <thead> <tr> <th colspan="4">Optik 85 - WFL</th> </tr> <tr> <th>Höhe [m]</th> <th>KegelØ [cm]</th> <th>E(0°) [lx/klm]</th> <th>E(C0) [lx/klm]</th> </tr> </thead> <tbody> <tr> <td>1</td> <td>83</td> <td>1522</td> <td>601</td> </tr> <tr> <td>2</td> <td>167</td> <td>381</td> <td>150</td> </tr> <tr> <td>3</td> <td>250</td> <td>169</td> <td>67</td> </tr> </tbody> </table>				Optik 85 - WFL				Höhe [m]	KegelØ [cm]	E(0°) [lx/klm]	E(C0) [lx/klm]	1	83	1522	601	2	167	381	150	3	250	169	67					
Optik 85 - WFL																												
Höhe [m]	KegelØ [cm]	E(0°) [lx/klm]	E(C0) [lx/klm]																									
1	83	1522	601																									
2	167	381	150																									
3	250	169	67																									
				without	82 %	-	-	10183954																				
				clear	78 %	-	-	10184579																				

Beam angle				Cover	LOR	Order number																						
Very Wide Flood						white	silver	black																				
<table border="1"> <thead> <tr> <th colspan="4">Optik 85 - VFL</th> </tr> <tr> <th>Höhe [m]</th> <th>KegelØ [cm]</th> <th>E(0°) [lx/klm]</th> <th>E(C0) [lx/klm]</th> </tr> </thead> <tbody> <tr> <td>1</td> <td>111</td> <td>1067</td> <td>360</td> </tr> <tr> <td>2</td> <td>223</td> <td>267</td> <td>90</td> </tr> <tr> <td>3</td> <td>334</td> <td>119</td> <td>40</td> </tr> </tbody> </table>				Optik 85 - VFL				Höhe [m]	KegelØ [cm]	E(0°) [lx/klm]	E(C0) [lx/klm]	1	111	1067	360	2	223	267	90	3	334	119	40					
Optik 85 - VFL																												
Höhe [m]	KegelØ [cm]	E(0°) [lx/klm]	E(C0) [lx/klm]																									
1	111	1067	360																									
2	223	267	90																									
3	334	119	40																									
				without	82 %	-	-	10183955																				
				clear	78 %	-	-	10184580																				

Technical details as well as weight specifications and measurements have been prepared with care. Errors excepted. All dimensions in mm · LED service life data: L80/B10 at ambient temperature (ta) 25°C. Rated lamp service life 50,000h. Luminous flux and efficiency specifications are subject to a tolerance of +/- 10%. Min CRI Ra: >80 / >90 · Product images are used as an example and may differ from the original · We reserve the right to make changes, insofar as they serve progress. Oktalite Lichttechnik GmbH · Mathias-Brüggen-Str. 73 · 50829 Cologne · T +49 221 59767-0 · F +49 221 59767-40 · mail@oktalite.com · www.oktalite.com · 2020-11-26