



## KALO

TRACK LIGHT

Small, efficient, unmistakable: the LED spotlight adapts easily to its area of use. The partly visible cooling fins enhance the plain white design. The ideal all-rounder for all applications.



### Manageable size

Also suitable for low-ceilinged rooms or small rooms



### Balanced centre of gravity

Suspended power track remains balanced during swivelling-out of the spotlights



### Customized illumination of the goods

Replacement of five interchangeable reflectors SP, MF, FL, WFL and VFL



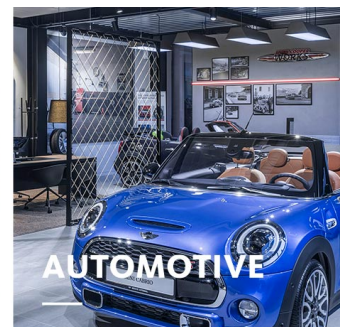
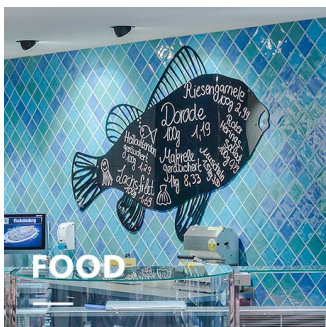
### Large selection of LEDs

Six white light colours and three special light colours for the fresh food area can be chosen from



### Intelligent light

Smart lighting management optionally with control line or wireless



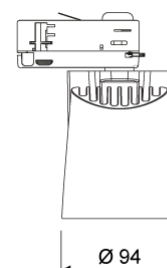
# KALO

[www.oktalite.com/kalo-t](http://www.oktalite.com/kalo-t)

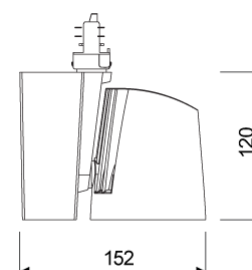
Type of luminaire	track light
Application areas	Accent lighting
Pan/tilt range	355° turning range, 180° swivel range
Mounting	3P Power Track Typ Global DALI, not suitable for vertical mounting
Lighting technology	LED <sup>IQ</sup> DALI
LED Luminous Flux Class	2000 lm - 4000 lm
Light colour White	2700 K, 3000 K, 3000 K - Efficient White, 3000 K - Brilliant Colour, 3500 K, 4000 K
Light colour Food*	M, M+F, BF
Cooling	passive
Supply unit	DALI driver integrated
Luminaire colour	RAL 9005 jet black





	RAL 9006 white aluminium
	RAL 9016 traffic white
	Special colours on request



Surface	structure powder-coated
Nominal voltage	220 - 240 V, 50/60Hz
Lighting controls	DALI DT6
Installation	Recommended for new installation.
Weight	Approx. 1.2 kg



Components	 Luminaire housing  Optic
------------	--

Test seal	   
-----------	---

\* M = Meat,  
M = Meat, F = Fish,  
BF = Brilliant Food

Technical details as well as weight specifications and measurements have been prepared with care. Errors excepted. All dimensions in mm · LED service life data: L80/B10 at ambient temperature (ta) 25°C. Rated lamp service life 50,000h. Luminous flux and efficiency specifications are subject to a tolerance of +/- 10%. Min CRI Ra: >80 / >90 · Product images are used as an example and may differ from the original · We reserve the right to make changes, insofar as they serve progress. Oktalite Lichttechnik GmbH · Mathias-Brüggen-Str. 73 · 50829 Cologne · T +49 221 59767-0 · F +49 221 59767-40 · mail@oktalite.com · www.oktalite.com · 2020-11-26

**KALO****oktalite**

LED Luminous Flux Class	Light colour	CRI R <sub>a</sub>	system luminous flux*	System performance	max. luminaires B16	Order number		
						white	silver	black
3000 lm	3000 K - Brilliant Colour	97	2630 lm	35 W	50	10183917	10183918	10183919
4000 lm	2700 K	81	3365 lm	31 W	50	10183920	10183921	10183922
	3000 K	83	3505 lm	31 W	50	10183923	10183924	10183925
	3000 K - Efficient White	94	3455 lm	37 W	50	10183926	10183927	10183928
	3500 K	85	3575 lm	31 W	50	10183929	10183930	10183931
	4000 K	83	3645 lm	31 W	50	10183932	10183933	10183934
2000 lm	M	-	1700 lm	31 W	50	10183938	10183939	10183940
	M+F	-	1605 lm	31 W	50	10183941	10183942	10183943
4000 lm	BF	-	3040 lm	41 W	50	10213399	10213400	10213401

Accessories	Order number
Suction lifter	10206417

\* System luminous flux based on medium flood reflector.



Efficient White: R<sub>s</sub> = 75, R<sub>r</sub> = 91, R<sub>g</sub> = 102



Brilliant Colour: R<sub>s</sub> = 94, R<sub>r</sub> = 95, R<sub>g</sub> = 104

Technical details as well as weight specifications and measurements have been prepared with care. Errors excepted. All dimensions in mm · LED service life data: L80/B10 at ambient temperature (ta) 25°C. Rated lamp service life 50,000h. Luminous flux and efficiency specifications are subject to a tolerance of +/- 10%. Min CRI Ra: >80 / >90 · Product images are used as an example and may differ from the original · We reserve the right to make changes, insofar as they serve progress. Oktalite Lichttechnik GmbH · Mathias-Brüggen-Str. 73 · 50829 Cologne · T +49 221 59767-0 · F +49 221 59767-40 · mail@oktalite.com · www.oktalite.com · 2020-11-26



# Optic 85 - LED IQ DALI

# oktalite

Optic 3D faceted reflectors  
Type interchangeable reflector system

Beam angle				Cover	LOR	Order number		
Spot						white	silver	black
<b>Optik 85 - SP</b>				without	82 %	-	-	10183944
				clear	78 %	-	-	10184576
Höhe [m]	KegelØ [cm]	E(0°) [lx/klm]	E(C0) [lx/klm]					
1	26	5755	2841					
2	52	1439	710					
3	78	639	316					

Beam angle				Cover	LOR	Order number		
Medium Flood						white	silver	black
<b>Optik 85 - MF</b>				without	83 %	-	-	10183959
				clear	79 %	-	-	10184577
Höhe [m]	KegelØ [cm]	E(0°) [lx/klm]	E(C0) [lx/klm]					
1	45	2845	1321					
2	91	711	330					
3	136	316	147					

Beam angle				Cover	LOR	Order number		
Flood						white	silver	black
<b>Optik 85 - FL</b>				without	82 %	-	-	10183953
				clear	78 %	-	-	10184578
Höhe [m]	KegelØ [cm]	E(0°) [lx/klm]	E(C0) [lx/klm]					
1	66	1941	832					
2	132	485	208					
3	197	216	92					

Technical details as well as weight specifications and measurements have been prepared with care. Errors excepted. All dimensions in mm · LED service life data: L80/B10 at ambient temperature (ta) 25°C. Rated lamp service life 50,000h. Luminous flux and efficiency specifications are subject to a tolerance of +/- 10%. Min CRI Ra: >80 / >90 · Product images are used as an example and may differ from the original · We reserve the right to make changes, insofar as they serve progress. Oktalite Lichttechnik GmbH · Mathias-Brüggen-Str. 73 · 50829 Cologne · T +49 221 59767-0 · F +49 221 59767-40 · mail@oktalite.com · www.oktalite.com · 2020-11-26



# Optic 85 - LED <sup>IQ</sup> DALI

# oktalite

Optic 3D faceted reflectors  
Type interchangeable reflector system

Beam angle				Cover	LOR	Order number																						
Wide Flood						white	silver	black																				
<table border="1"> <thead> <tr> <th colspan="4">Optik 85 - WFL</th> </tr> <tr> <th>Höhe [m]</th> <th>KegelØ [cm]</th> <th>E(0°) [lx/klm]</th> <th>E(C0) [lx/klm]</th> </tr> </thead> <tbody> <tr> <td>1</td> <td>83</td> <td>1522</td> <td>601</td> </tr> <tr> <td>2</td> <td>167</td> <td>381</td> <td>150</td> </tr> <tr> <td>3</td> <td>250</td> <td>169</td> <td>67</td> </tr> </tbody> </table>				Optik 85 - WFL				Höhe [m]	KegelØ [cm]	E(0°) [lx/klm]	E(C0) [lx/klm]	1	83	1522	601	2	167	381	150	3	250	169	67					
Optik 85 - WFL																												
Höhe [m]	KegelØ [cm]	E(0°) [lx/klm]	E(C0) [lx/klm]																									
1	83	1522	601																									
2	167	381	150																									
3	250	169	67																									
				without	82 %	-	-	10183954																				
				clear	78 %	-	-	10184579																				

Beam angle				Cover	LOR	Order number																						
Very Wide Flood						white	silver	black																				
<table border="1"> <thead> <tr> <th colspan="4">Optik 85 - VFL</th> </tr> <tr> <th>Höhe [m]</th> <th>KegelØ [cm]</th> <th>E(0°) [lx/klm]</th> <th>E(C0) [lx/klm]</th> </tr> </thead> <tbody> <tr> <td>1</td> <td>111</td> <td>1067</td> <td>360</td> </tr> <tr> <td>2</td> <td>223</td> <td>267</td> <td>90</td> </tr> <tr> <td>3</td> <td>334</td> <td>119</td> <td>40</td> </tr> </tbody> </table>				Optik 85 - VFL				Höhe [m]	KegelØ [cm]	E(0°) [lx/klm]	E(C0) [lx/klm]	1	111	1067	360	2	223	267	90	3	334	119	40					
Optik 85 - VFL																												
Höhe [m]	KegelØ [cm]	E(0°) [lx/klm]	E(C0) [lx/klm]																									
1	111	1067	360																									
2	223	267	90																									
3	334	119	40																									
				without	82 %	-	-	10183955																				
				clear	78 %	-	-	10184580																				

Technical details as well as weight specifications and measurements have been prepared with care. Errors excepted. All dimensions in mm · LED service life data: L80/B10 at ambient temperature (ta) 25°C. Rated lamp service life 50,000h. Luminous flux and efficiency specifications are subject to a tolerance of +/- 10%. Min CRI Ra: >80 / >90 · Product images are used as an example and may differ from the original · We reserve the right to make changes, insofar as they serve progress. Oktalite Lichttechnik GmbH · Mathias-Brüggen-Str. 73 · 50829 Cologne · T +49 221 59767-0 · F +49 221 59767-40 · mail@oktalite.com · www.oktalite.com · 2020-11-26