



KALO

TRACK LIGHT

Small, efficient, unmistakable: the LED spotlight adapts easily to its area of use. The partly visible cooling fins enhance the plain white design. The ideal all-rounder for all applications.



Manageable size

Also suitable for low-ceilinged rooms or small rooms



Balanced centre of gravity

Suspended power track remains balanced during swivelling-out of the spotlights



Customized illumination of the goods

Replacement of five interchangeable reflectors SP, MF, FL, WFL and VFL



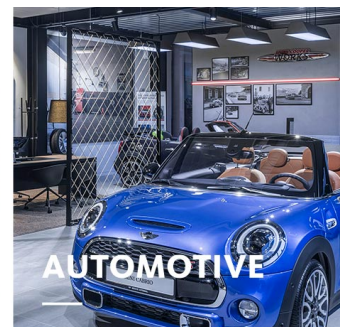
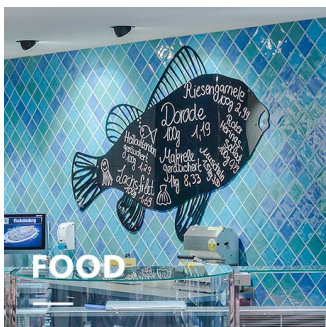
Large selection of LEDs

Six white light colours and three special light colours for the fresh food area can be chosen from



Intelligent light

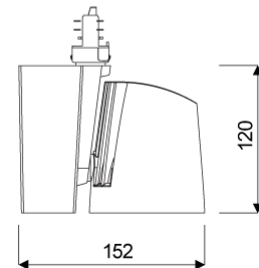
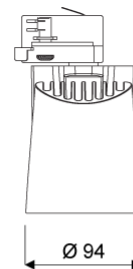
Smart lighting management optionally with control line or wireless



www.oktalite.com/kalo-t

Type of luminaire	track light
Application areas	Accent lighting
Pan/tilt range	355° turning range, 180° swivel range
Mounting	3P Power Track, not suitable for vertical mounting
Lighting technology	LED
LED Luminous Flux Class	1500 lm - 4000 lm
Light colour White	2700 K, 3000 K, 3000 K - Efficient White, 3000 K - Brilliant Colour, 3500 K, 4000 K
Light colour Food*	M, M+F, BF
Cooling	passive
Supply unit	Driver integrated
Luminaire colour	RAL 9005 jet black RAL 9006 white aluminium RAL 9016 traffic white Special colours on request
Surface	structure powder-coated
Nominal voltage	220 - 240 V, 50/60Hz
Lighting controls	on request
Weight	Approx. 1.2 kg
Components	 Luminaire housing  Optic
Test seal	   

* M = Meat,
M = Meat, F = Fish,
BF = Brilliant Food



Technical details as well as weight specifications and measurements have been prepared with care. Errors excepted. All dimensions in mm · LED service life data: L80/B10 at ambient temperature (ta) 25°C. Rated lamp service life 50,000h. Luminous flux and efficiency specifications are subject to a tolerance of +/- 10%. Min CRI Ra: >80 / >90 · Product images are used as an example and may differ from the original · We reserve the right to make changes, insofar as they serve progress. Oktalite Lichttechnik GmbH · Mathias-Brüggen-Str. 73 · 50829 Cologne · T +49 221 59767-0 · F +49 221 59767-40 · mail@oktalite.com · www.oktalite.com · 2020-11-26



LED Luminous Flux Class	Light colour	CRI R _a	system luminous flux*	System performance	max. luminaires B16	Order number		
						white	silver	black
2000 lm	3000 K - Efficient White	94	1890 lm	17 W	49	10188367	10188368	10188369
	3000 K - Brilliant Colour	97	1770 lm	21 W	25	10188370	10188371	10188372
3000 lm	2700 K	81	2670 lm	23 W	25	10183863	10183864	10183865
	3000 K	83	2780 lm	23 W	25	10183866	10183867	10183868
	3000 K - Efficient White	94	2730 lm	27 W	25	10183869	10183870	10183871
	3000 K - Brilliant Colour	97	2630 lm	35 W	25	10183872	10183873	10183874
	3500 K	85	2835 lm	23 W	25	10183875	10183876	10183877
	4000 K	83	2890 lm	23 W	25	10183878	10183879	10183880
4000 lm	2700 K	81	3365 lm	31 W	25	10183881	10183882	10183883
	3000 K	83	3505 lm	31 W	25	10183884	10183885	10183886
	3000 K - Efficient White	94	3455 lm	37 W	25	10183887	10183888	10183889
	3500 K	85	3575 lm	31 W	25	10183893	10183894	10183895
	4000 K	83	3645 lm	31 W	25	10183896	10183897	10183898
1500 lm	M	-	1350 lm	23 W	25	10183899	10183900	10183901
	M+F	-	1275 lm	23 W	25	10183902	10183903	10183904
2000 lm	M	-	1700 lm	31 W	25	10183905	10183906	10183907
	M+F	-	1605 lm	31 W	25	10183908	10183909	10183910
	BF	-	1690 lm	19 W	25	10213390	10213391	10213392
3000 lm	BF	-	2485 lm	31 W	25	10213393	10213394	10213395
4000 lm	BF	-	3040 lm	41 W	23	10213396	10213397	10213398

Accessories	Order number
Suction lifter	10206417

Technical details as well as weight specifications and measurements have been prepared with care. Errors excepted. All dimensions in mm · LED service life data: L80/B10 at ambient temperature (ta) 25°C. Rated lamp service life 50,000h. Luminous flux and efficiency specifications are subject to a tolerance of +/- 10%. Min CRI Ra: >80 / >90 · Product images are used as an example and may differ from the original · We reserve the right to make changes, insofar as they serve progress. Oktalite Lichttechnik GmbH · Mathias-Brüggen-Str. 73 · 50829 Cologne · T +49 221 59767-0 · F +49 221 59767-40 · mail@oktalite.com · www.oktalite.com · 2020-11-26

* System luminous flux based on medium flood reflector.



Efficient White: $R_9 = 75$, $R_f = 91$, $R_g = 102$



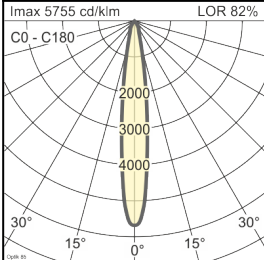
Brilliant Colour: $R_9 = 94$, $R_f = 95$, $R_g = 104$

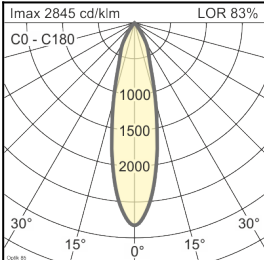
Technical details as well as weight specifications and measurements have been prepared with care. Errors excepted. All dimensions in mm · LED service life data: L80/B10 at ambient temperature (t_a) 25°C. Rated lamp service life 50,000h. Luminous flux and efficiency specifications are subject to a tolerance of +/- 10%. Min CRI Ra: >80 / >90 · Product images are used as an example and may differ from the original · We reserve the right to make changes, insofar as they serve progress. Oktalite Lichttechnik GmbH · Mathias-Brüggen-Str. 73 · 50829 Cologne · T +49 221 59767-0 · F +49 221 59767-40 · mail@oktalite.com · www.oktalite.com · 2020-11-26

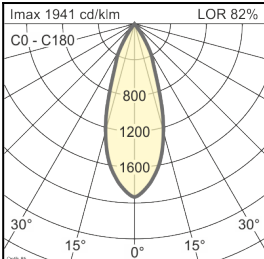
Optic 85 - LED

oktalite

Optic 3D faceted reflectors
 Type interchangeable reflector system

Beam angle				Cover	LOR	Order number																							
Spot						white	silver	black																					
Optik 85 - SP <table border="1"> <thead> <tr> <th>Höhe [m]</th> <th>KegelØ [cm]</th> <th>E(0°) [lx/klm]</th> <th>E(C0) [lx/klm]</th> </tr> </thead> <tbody> <tr> <td>1</td> <td>26</td> <td>5755</td> <td>2841</td> </tr> <tr> <td>2</td> <td>52</td> <td>1439</td> <td>710</td> </tr> <tr> <td>3</td> <td>78</td> <td>639</td> <td>316</td> </tr> </tbody> </table>				Höhe [m]	KegelØ [cm]	E(0°) [lx/klm]	E(C0) [lx/klm]	1	26	5755	2841	2	52	1439	710	3	78	639	316						without	82 %	-	-	10183944
Höhe [m]	KegelØ [cm]	E(0°) [lx/klm]	E(C0) [lx/klm]																										
1	26	5755	2841																										
2	52	1439	710																										
3	78	639	316																										
				clear	78 %	-	-		10184576																				

Beam angle				Cover	LOR	Order number																							
Medium Flood						white	silver	black																					
Optik 85 - MF <table border="1"> <thead> <tr> <th>Höhe [m]</th> <th>KegelØ [cm]</th> <th>E(0°) [lx/klm]</th> <th>E(C0) [lx/klm]</th> </tr> </thead> <tbody> <tr> <td>1</td> <td>45</td> <td>2845</td> <td>1321</td> </tr> <tr> <td>2</td> <td>91</td> <td>711</td> <td>330</td> </tr> <tr> <td>3</td> <td>136</td> <td>316</td> <td>147</td> </tr> </tbody> </table>				Höhe [m]	KegelØ [cm]	E(0°) [lx/klm]	E(C0) [lx/klm]	1	45	2845	1321	2	91	711	330	3	136	316	147						without	83 %	-	-	10183959
Höhe [m]	KegelØ [cm]	E(0°) [lx/klm]	E(C0) [lx/klm]																										
1	45	2845	1321																										
2	91	711	330																										
3	136	316	147																										
				clear	79 %	-	-		10184577																				

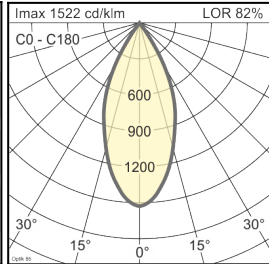
Beam angle				Cover	LOR	Order number																							
Flood						white	silver	black																					
Optik 85 - FL <table border="1"> <thead> <tr> <th>Höhe [m]</th> <th>KegelØ [cm]</th> <th>E(0°) [lx/klm]</th> <th>E(C0) [lx/klm]</th> </tr> </thead> <tbody> <tr> <td>1</td> <td>66</td> <td>1941</td> <td>832</td> </tr> <tr> <td>2</td> <td>132</td> <td>485</td> <td>208</td> </tr> <tr> <td>3</td> <td>197</td> <td>216</td> <td>92</td> </tr> </tbody> </table>				Höhe [m]	KegelØ [cm]	E(0°) [lx/klm]	E(C0) [lx/klm]	1	66	1941	832	2	132	485	208	3	197	216	92						without	82 %	-	-	10183953
Höhe [m]	KegelØ [cm]	E(0°) [lx/klm]	E(C0) [lx/klm]																										
1	66	1941	832																										
2	132	485	208																										
3	197	216	92																										
				clear	78 %	-	-		10184578																				

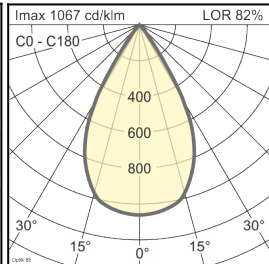
Technical details as well as weight specifications and measurements have been prepared with care. Errors excepted. All dimensions in mm · LED service life data: L80/B10 at ambient temperature (ta) 25°C. Rated lamp service life 50,000h. Luminous flux and efficiency specifications are subject to a tolerance of +/- 10%. Min CRI Ra: >80 / >90 · Product images are used as an example and may differ from the original · We reserve the right to make changes, insofar as they serve progress. Oktalite Lichttechnik GmbH · Mathias-Brüggen-Str. 73 · 50829 Cologne · T +49 221 59767-0 · F +49 221 59767-40 · mail@oktalite.com · www.oktalite.com · 2020-11-26

Optic 85 - LED

oktalite

Optic 3D faceted reflectors
 Type interchangeable reflector system

Beam angle				Cover	LOR	Order number																							
Wide Flood						white	silver	black																					
Optik 85 - WFL <table border="1"> <thead> <tr> <th>Höhe [m]</th> <th>KegelØ [cm]</th> <th>E(0°) [lx/klm]</th> <th>E(C0) [lx/klm]</th> </tr> </thead> <tbody> <tr> <td>1</td> <td>83</td> <td>1522</td> <td>601</td> </tr> <tr> <td>2</td> <td>167</td> <td>381</td> <td>150</td> </tr> <tr> <td>3</td> <td>250</td> <td>169</td> <td>67</td> </tr> </tbody> </table>				Höhe [m]	KegelØ [cm]	E(0°) [lx/klm]	E(C0) [lx/klm]	1	83	1522	601	2	167	381	150	3	250	169	67						without	82 %	-	-	10183954
Höhe [m]	KegelØ [cm]	E(0°) [lx/klm]	E(C0) [lx/klm]																										
1	83	1522	601																										
2	167	381	150																										
3	250	169	67																										
				clear	78 %	-	-		10184579																				

Beam angle				Cover	LOR	Order number																							
Very Wide Flood						white	silver	black																					
Optik 85 - VFL <table border="1"> <thead> <tr> <th>Höhe [m]</th> <th>KegelØ [cm]</th> <th>E(0°) [lx/klm]</th> <th>E(C0) [lx/klm]</th> </tr> </thead> <tbody> <tr> <td>1</td> <td>111</td> <td>1067</td> <td>360</td> </tr> <tr> <td>2</td> <td>223</td> <td>267</td> <td>90</td> </tr> <tr> <td>3</td> <td>334</td> <td>119</td> <td>40</td> </tr> </tbody> </table>				Höhe [m]	KegelØ [cm]	E(0°) [lx/klm]	E(C0) [lx/klm]	1	111	1067	360	2	223	267	90	3	334	119	40						without	82 %	-	-	10183955
Höhe [m]	KegelØ [cm]	E(0°) [lx/klm]	E(C0) [lx/klm]																										
1	111	1067	360																										
2	223	267	90																										
3	334	119	40																										
				clear	78 %	-	-		10184580																				

Technical details as well as weight specifications and measurements have been prepared with care. Errors excepted. All dimensions in mm · LED service life data: L80/B10 at ambient temperature (ta) 25°C. Rated lamp service life 50,000h. Luminous flux and efficiency specifications are subject to a tolerance of +/- 10%. Min CRI Ra: >80 / >90 · Product images are used as an example and may differ from the original · We reserve the right to make changes, insofar as they serve progress. Oktalite Lichttechnik GmbH · Mathias-Brüggen-Str. 73 · 50829 Cologne · T +49 221 59767-0 · F +49 221 59767-40 · mail@oktalite.com · www.oktalite.com · 2020-11-26