



## B.VEO TWIN

TRACK MOUNTED LUMINAIRES

B.VEO TWIN with two spotlight heads and unobtrusive housing is the ideal partner for the strongly accentuated and yet harmonious ceiling and wall design. Hence the number of spotlights can be doubled or the unit can be systematically supplemented with the same number of luminaires and without additional driver housings: the calm overall impression remains!



### Double power

Two spotlight heads with high-performance reflector, diameter of only 75 mm



### Uniform look

The chic design also gives two spotlights on the track a delicate appearance.



### High output, low consumption

- High energy efficiency of up to 120 lm/W
- Lumen packages of between 3000 and 4000 lumens per luminaire head



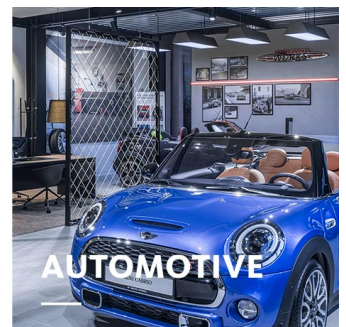
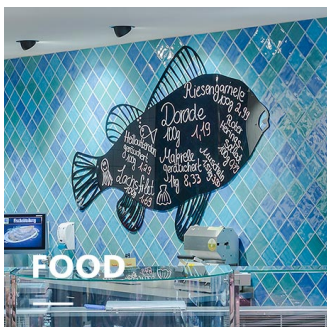
### Low investment costs

For the basic equipping with B.VEO TWIN the costs are kept within limits



### Intelligent lighting concepts

Thanks to LED<sup>IQ</sup> technology there are many possibilities of customised and easily controllable dynamic lighting concepts

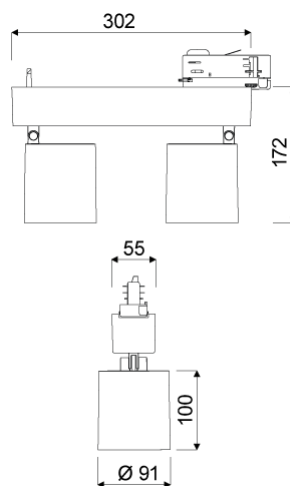


## B.VEO TWIN



# oktalite

[www.oktalite.com/bveo-twin-t](http://www.oktalite.com/bveo-twin-t)

Type of luminaire	Track mounted luminaires
Application areas	Accent lighting
Pan/tilt range	270° turning range, 90° swivel range
Mounting	3-circuit power track adapter, suitable for vertical mounting
Lighting technology	LED <sup>IQ</sup>
Lumen category	2000 lm - 4000 lm
Light colour White	2700 K, 3000 K, 3000 K - Efficient White, 3000 K - Brilliant Colour, 3500 K, 4000 K
Light colour Food*	B+V+C, M, M+F
Cooling	passive
Supply unit	DALI driver integrated
Luminaire colour	RAL 9005 jet black RAL 9006 white aluminium RAL 9016 traffic white Special colours on request



Surface	structure powder-coated
Nominal voltage	220 - 240 V, 50/60Hz
Lighting controls	DALI
Weight	Approx. 2.0 kg

Components	 Luminaire housing  Optic
------------	--

Test seal	   
-----------	---

\* B = Bakery, V = Vegetable, C = Cheese,  
M = Meat,  
M = Meat, F = Fish

Technical details as well as weight specifications and measurements have been prepared with care. Errors excepted. All dimensions in mm · LED service life data: L80/B10 at ambient temperature (ta) 25°C. Rated lamp service life 50,000h. Luminous flux and efficiency specifications are subject to a tolerance of +/- 10%. Min CRI Ra: >80 / >90 · Product images are used as an example and may differ from the original · We reserve the right to make changes, insofar as they serve progress. Oktalite Lichttechnik GmbH · Mathias-Brüggen-Str. 73 · 50829 Cologne · T +49 221 59767-0 · F +49 221 59767-40 · mail@oktalite.com · www.oktalite.com · 2019-06-16

**B.VEO TWIN****oktalite**

Lumen category	Light colour	CRI [RA]	system luminous flux*	System performance	Order number		
					white	silver	black
3000 lm	3000 K - Brilliant Colour	96	2 x 2610 lm	70 W	10187637	10187638	10187639
4000 lm	2700 K	81	2 x 3390 lm	62 W	10187640	10187641	10187642
4000 lm	3000 K	83	2 x 3530 lm	62 W	10187643	10187644	10187645
4000 lm	3000 K - Efficient White	94	2 x 3465 lm	74 W	10187646	10187647	10187648
4000 lm	3500 K	85	2 x 3600 lm	62 W	10187649	10187650	10187651
4000 lm	4000 K	83	2 x 3670 lm	62 W	10187652	10187653	10187654
2000 lm	M	-	2 x 1715 lm	62 W	10187658	10187659	10187660
2000 lm	M+F	-	2 x 1615 lm	62 W	10187661	10187662	10187663
4000 lm	B+V+C	-	2 x 3170 lm	82 W	10187655	10187656	10187657

Accessories	Order number
Suction lifter	10184208

\* System luminous flux based on medium flood reflector in silver.

Efficient White: R<sub>s</sub> = 75, R<sub>r</sub> = 91, R<sub>g</sub> = 102

Brilliant Colour: R<sub>s</sub> = 92, R<sub>r</sub> = 93, R<sub>g</sub> = 106

Technical details as well as weight specifications and measurements have been prepared with care. Errors excepted. All dimensions in mm · LED service life data: L80/B10 at ambient temperature (ta) 25°C. Rated lamp service life 50,000h. Luminous flux and efficiency specifications are subject to a tolerance of +/- 10%. Min CRI Ra: >80 / >90 · Product images are used as an example and may differ from the original · We reserve the right to make changes, insofar as they serve progress. Oktalite Lichttechnik GmbH · Mathias-Brüggen-Str. 73 · 50829 Cologne · T +49 221 59767-0 · F +49 221 59767-40 · mail@oktalite.com · www.oktalite.com · 2019-06-16

# Optic 85 - LED<sup>IQ</sup>

# oktalite

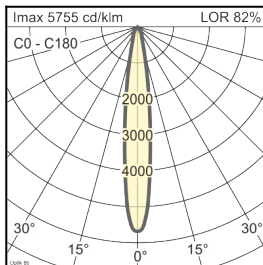
Reflector colour

silver

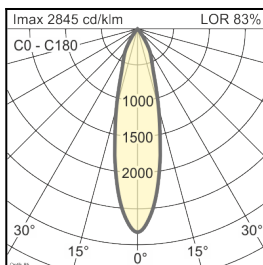
Lighting technology

 LED<sup>IQ</sup>

Beam angle Spot	Type of reflector	Cover / filter	LOR*	Order number																		
				white	silver	black																
<b>Optik 85 - SP</b> <table border="1"> <thead> <tr> <th>Höhe [m]</th> <th>KegelØ [cm]</th> <th>E(0°) [lx/klm]</th> <th>E(C0) [lx/klm]</th> </tr> </thead> <tbody> <tr> <td>1</td> <td>26</td> <td>5755</td> <td>2841</td> </tr> <tr> <td>2</td> <td>52</td> <td>1439</td> <td>710</td> </tr> <tr> <td>3</td> <td>78</td> <td>639</td> <td>316</td> </tr> </tbody> </table>	Höhe [m]	KegelØ [cm]	E(0°) [lx/klm]	E(C0) [lx/klm]	1	26	5755	2841	2	52	1439	710	3	78	639	316	Facets	without	82 %	-	-	10183944
	Höhe [m]	KegelØ [cm]	E(0°) [lx/klm]	E(C0) [lx/klm]																		
	1	26	5755	2841																		
2	52	1439	710																			
3	78	639	316																			
Facets	clear	78 %	-	-	10184576																	



Beam angle Medium Flood	Type of reflector	Cover / filter	LOR*	Order number																		
				white	silver	black																
<b>Optik 85 - MF</b> <table border="1"> <thead> <tr> <th>Höhe [m]</th> <th>KegelØ [cm]</th> <th>E(0°) [lx/klm]</th> <th>E(C0) [lx/klm]</th> </tr> </thead> <tbody> <tr> <td>1</td> <td>45</td> <td>2845</td> <td>1321</td> </tr> <tr> <td>2</td> <td>91</td> <td>711</td> <td>330</td> </tr> <tr> <td>3</td> <td>136</td> <td>316</td> <td>147</td> </tr> </tbody> </table>	Höhe [m]	KegelØ [cm]	E(0°) [lx/klm]	E(C0) [lx/klm]	1	45	2845	1321	2	91	711	330	3	136	316	147	Facets	without	83 %	-	-	10183959
	Höhe [m]	KegelØ [cm]	E(0°) [lx/klm]	E(C0) [lx/klm]																		
	1	45	2845	1321																		
2	91	711	330																			
3	136	316	147																			
Facets	clear	79 %	-	-	10184577																	



Technical details as well as weight specifications and measurements have been prepared with care. Errors excepted. All dimensions in mm · LED service life data: L80/B10 at ambient temperature (ta) 25°C. Rated lamp service life 50,000h. Luminous flux and efficiency specifications are subject to a tolerance of +/- 10%. Min CRI Ra: >80 / >90 · Product images are used as an example and may differ from the original · We reserve the right to make changes, insofar as they serve progress. Oktalite Lichttechnik GmbH · Mathias-Brüggen-Str. 73 · 50829 Cologne · T +49 221 59767-0 · F +49 221 59767-40 · mail@oktalite.com · www.oktalite.com · 2019-06-16

# Optic 85 - LED<sup>IQ</sup>

# oktalite

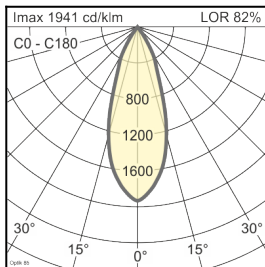
Reflector colour

silver

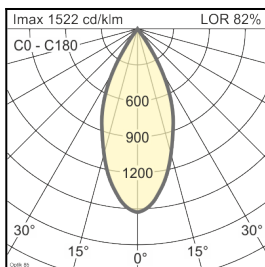
Lighting technology

LED<sup>IQ</sup>

Beam angle Flood	Type of reflector	Cover / filter	LOR*	Order number																						
				white	silver	black																				
<table border="1"> <thead> <tr> <th colspan="4">Optik 85 - FL</th> </tr> <tr> <th>Höhe [m]</th> <th>KegelØ [cm]</th> <th>E(0°) [lx/klm]</th> <th>E(C0) [lx/klm]</th> </tr> </thead> <tbody> <tr> <td>1</td> <td>66</td> <td>1941</td> <td>832</td> </tr> <tr> <td>2</td> <td>132</td> <td>485</td> <td>208</td> </tr> <tr> <td>3</td> <td>197</td> <td>216</td> <td>92</td> </tr> </tbody> </table>	Optik 85 - FL				Höhe [m]	KegelØ [cm]	E(0°) [lx/klm]	E(C0) [lx/klm]	1	66	1941	832	2	132	485	208	3	197	216	92	Facets	without	82 %	-	-	10183953
	Optik 85 - FL																									
	Höhe [m]	KegelØ [cm]	E(0°) [lx/klm]	E(C0) [lx/klm]																						
1	66	1941	832																							
2	132	485	208																							
3	197	216	92																							
	Facets	clear	78 %	-	-	10184578																				



Beam angle Wide Flood	Type of reflector	Cover / filter	LOR*	Order number																						
				white	silver	black																				
<table border="1"> <thead> <tr> <th colspan="4">Optik 85 - WFL</th> </tr> <tr> <th>Höhe [m]</th> <th>KegelØ [cm]</th> <th>E(0°) [lx/klm]</th> <th>E(C0) [lx/klm]</th> </tr> </thead> <tbody> <tr> <td>1</td> <td>83</td> <td>1522</td> <td>601</td> </tr> <tr> <td>2</td> <td>167</td> <td>381</td> <td>150</td> </tr> <tr> <td>3</td> <td>250</td> <td>169</td> <td>67</td> </tr> </tbody> </table>	Optik 85 - WFL				Höhe [m]	KegelØ [cm]	E(0°) [lx/klm]	E(C0) [lx/klm]	1	83	1522	601	2	167	381	150	3	250	169	67	Facets	without	82 %	-	-	10183954
	Optik 85 - WFL																									
	Höhe [m]	KegelØ [cm]	E(0°) [lx/klm]	E(C0) [lx/klm]																						
1	83	1522	601																							
2	167	381	150																							
3	250	169	67																							
	Facets	clear	78 %	-	-	10184579																				



Technical details as well as weight specifications and measurements have been prepared with care. Errors excepted. All dimensions in mm · LED service life data: L80/B10 at ambient temperature (ta) 25°C. Rated lamp service life 50,000h. Luminous flux and efficiency specifications are subject to a tolerance of +/- 10%. Min CRI Ra: >80 / >90 · Product images are used as an example and may differ from the original · We reserve the right to make changes, insofar as they serve progress. Oktalite Lichttechnik GmbH · Mathias-Brüggen-Str. 73 · 50829 Cologne · T +49 221 59767-0 · F +49 221 59767-40 · mail@oktalite.com · www.oktalite.com · 2019-06-16

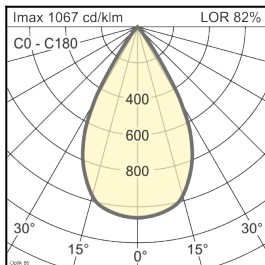
Reflector colour

silver

Lighting technology

LED<sup>IQ</sup>

Beam angle Very Wide Flood	Type of reflector	Cover / filter	LOR*	Order number																		
				white	silver	black																
<table border="1"> <caption>Optik 85 - VFL</caption> <thead> <tr> <th>Höhe [m]</th> <th>KegelØ [cm]</th> <th>E(0°) [lx/klm]</th> <th>E(C0) [lx/klm]</th> </tr> </thead> <tbody> <tr> <td>1</td> <td>111</td> <td>1067</td> <td>360</td> </tr> <tr> <td>2</td> <td>223</td> <td>267</td> <td>90</td> </tr> <tr> <td>3</td> <td>334</td> <td>119</td> <td>40</td> </tr> </tbody> </table>	Höhe [m]	KegelØ [cm]	E(0°) [lx/klm]	E(C0) [lx/klm]	1	111	1067	360	2	223	267	90	3	334	119	40	Facets	without	82 %	-	-	10183955
	Höhe [m]	KegelØ [cm]	E(0°) [lx/klm]	E(C0) [lx/klm]																		
	1	111	1067	360																		
2	223	267	90																			
3	334	119	40																			
Facets	clear	78 %	-	-	10184580																	



Technical details as well as weight specifications and measurements have been prepared with care. Errors excepted. All dimensions in mm · LED service life data: L80/B10 at ambient temperature (ta) 25°C. Rated lamp service life 50,000h. Luminous flux and efficiency specifications are subject to a tolerance of +/- 10%. Min CRI Ra: >80 / >90 · Product images are used as an example and may differ from the original · We reserve the right to make changes, insofar as they serve progress. Oktalite Lichttechnik GmbH · Mathias-Brüggen-Str. 73 · 50829 Cologne · T +49 221 59767-0 · F +49 221 59767-40 · mail@oktalite.com · www.oktalite.com · 2019-06-16