



## CANILO PLUS

TRACK LIGHT

CANILO Plus is the power package of the Canilo luminaire family. With up to 6,000 lumens it can be used wherever a high output is required – in rooms with high ceilings, for example, or where marked accents and a dramatic interplay of light and shadows are required.



### Power package

- White light colours up to 6000 lm
- Special light spectrums for the fresh-food area up to 4000 lm



### Efficient lighting

6 % more light and 34 % more efficiency (in comparison to HIT 70 W)



### Elegant design

Classic design with elegant proportions – CANILO fits into every shop design



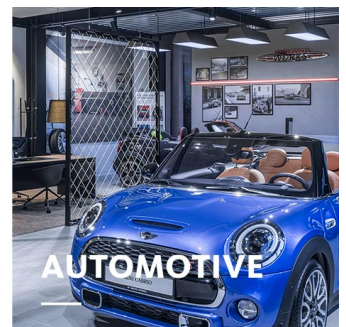
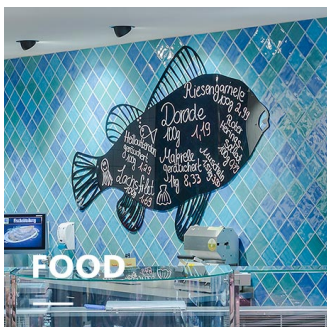
### Well protected

Optional glass cover to protect from dirt



### High degree of visual comfort

Always black anti-glare ring provides, as a design element, +F18 extremely high visual comfort





# CANILO PLUS

# oktalite

[www.oktalite.com/canilo-plus-t](http://www.oktalite.com/canilo-plus-t)

Type of luminaire	track light
Application areas	Accent lighting, High-level decoration
Pan/tilt range	355° turning range, 200° swivel range
Mounting	3P Power Track Typ Global DALI, not suitable for vertical mounting
Lighting technology	LED <sup>IQ</sup> DALI
LED Luminous Flux Class	3000 lm - 6000 lm
Light colour White	2700 K, 3000 K, 3000 K - Efficient White, 3000 K - Brilliant Colour, 3500 K, 4000 K
Light colour Food*	M, M+F, BF
Cooling	passive
Supply unit	DALI driver integrated
Luminaire colour	RAL 9005 jet black RAL 9006 white aluminium RAL 9016 traffic white Special colours on request
Surface	structure powder-coated
Nominal voltage	220 - 240 V, 50/60Hz
Lighting controls	DALI DT6
Installation	Recommended for new installation.
Weight	Approx. 3.0 kg
Components	

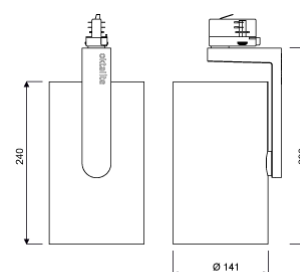
-  Luminaire housing
-  Optic

Test seal



\* M = Meat,  
M = Meat, F = Fish,  
BF = Brilliant Food

**LED<sup>IQ</sup> DALI**



Technical details as well as weight specifications and measurements have been prepared with care. Errors excepted. All dimensions in mm · LED service life data: L80/B10 at ambient temperature (ta) 25°C. Rated lamp service life 50,000h. Luminous flux and efficiency specifications are subject to a tolerance of +/- 10%. Min CRI Ra: >80 / >90 · Product images are used as an example and may differ from the original · We reserve the right to make changes, insofar as they serve progress. Oktalite Lichttechnik GmbH · Mathias-Brüggen-Str. 73 · 50829 Cologne · T +49 221 59767-0 · F +49 221 59767-40 · mail@oktalite.com · www.oktalite.com · 2020-09-28

**CANILO PLUS****oktalite**

LED Luminous Flux Class	Light colour	CRI R <sub>a</sub>	system luminous flux*	System performance	Order number		
					white	silver	black
4000 lm	3000 K - Brilliant Colour	97	3900 lm	46 W	10190139	10191176	10190140
5000 lm	3000 K - Efficient White	94	4925 lm	46 W	10190137	10191175	10190138
6000 lm	2700 K	81	5480 lm	46 W	10190133	10191173	10190134
	3000 K	83	5635 lm	46 W	10190135	10191174	10190136
	3500 K	85	5745 lm	46 W	10190141	10191177	10190142
	4000 K	83	5935 lm	46 W	10190143	10191178	10190144
3000 lm	M	-	2840 lm	46 W	10190127	10191170	10190128
	M+F	-	2645 lm	46 W	10190129	10191171	10190130
4000 lm	BF	-	3575 lm	40 W	10213596	10213597	10213598

\* System luminous flux based on medium flood reflector.



Efficient White: R<sub>9</sub> = 75, R<sub>r</sub> = 91, R<sub>g</sub> = 102



Brilliant Colour: R<sub>9</sub> = 94, R<sub>r</sub> = 95, R<sub>g</sub> = 104

Technical details as well as weight specifications and measurements have been prepared with care. Errors excepted. All dimensions in mm · LED service life data: L80/B10 at ambient temperature (ta) 25°C. Rated lamp service life 50,000h. Luminous flux and efficiency specifications are subject to a tolerance of +/- 10%. Min CRI Ra: >80 / >90 · Product images are used as an example and may differ from the original · We reserve the right to make changes, insofar as they serve progress. Oktalite Lichttechnik GmbH · Mathias-Brüggen-Str. 73 · 50829 Cologne · T +49 221 59767-0 · F +49 221 59767-40 · mail@oktalite.com · www.oktalite.com · 2020-09-28



Optic - LED IQ DALI

# Optic Canilo Plus - LED IQ DALI

# oktalite

Optic 3D faceted reflectors  
 Type interchangeable reflector system

Beam angle				Cover	LOR	Order number		
Spot						white	silver	black
<b>Optik 132 - SP</b>								
Höhe [m]	KegelØ [cm]	E(0°) [lx/klm]	E(C0) [lx/klm]					
1	24	6842	3367	without	84 %	-	-	10186904
2	48	1711	842	clear	80 %	-	-	10186909
3	73	760	374					

Beam angle				Cover	LOR	Order number		
Medium Flood						white	silver	black
<b>Optik 132 - MF</b>								
Höhe [m]	KegelØ [cm]	E(0°) [lx/klm]	E(C0) [lx/klm]					
1	43	3357	1573	without	87 %	-	-	10186905
2	85	839	393	clear	83 %	-	-	10186910
3	128	373	175					

Beam angle				Cover	LOR	Order number		
Flood						white	silver	black
<b>Optik 132 - FL</b>								
Höhe [m]	KegelØ [cm]	E(0°) [lx/klm]	E(C0) [lx/klm]					
1	66	1981	857	without	86 %	-	-	10186906
2	132	495	214	clear	82 %	-	-	10186911
3	197	220	95					

Technical details as well as weight specifications and measurements have been prepared with care. Errors excepted. All dimensions in mm · LED service life data: L80/B10 at ambient temperature (ta) 25°C. Rated lamp service life 50,000h. Luminous flux and efficiency specifications are subject to a tolerance of +/- 10%. Min CRI Ra: >80 / >90 · Product images are used as an example and may differ from the original · We reserve the right to make changes, insofar as they serve progress. Oktalite Lichttechnik GmbH · Mathias-Brüggen-Str. 73 · 50829 Cologne · T +49 221 59767-0 · F +49 221 59767-40 · mail@oktalite.com · www.oktalite.com · 2020-09-28



Optic - LED IQ DALI

# Optic Canilo Plus - LED IQ DALI

# oktalite

Optic 3D faceted reflectors  
 Type interchangeable reflector system

Beam angle				Cover	LOR	Order number																		
Wide Flood						white	silver	black																
<b>Optik 132 - WFL</b> <table border="1"> <thead> <tr> <th>Höhe [m]</th> <th>KegelØ [cm]</th> <th>E(0°) [lx/klm]</th> <th>E(C0) [lx/klm]</th> </tr> </thead> <tbody> <tr> <td>1</td> <td>87</td> <td>1437</td> <td>554</td> </tr> <tr> <td>2</td> <td>175</td> <td>359</td> <td>139</td> </tr> <tr> <td>3</td> <td>262</td> <td>160</td> <td>62</td> </tr> </tbody> </table>				Höhe [m]	KegelØ [cm]	E(0°) [lx/klm]	E(C0) [lx/klm]	1	87	1437	554	2	175	359	139	3	262	160	62					
Höhe [m]	KegelØ [cm]	E(0°) [lx/klm]	E(C0) [lx/klm]																					
1	87	1437	554																					
2	175	359	139																					
3	262	160	62																					
				without	86 %	-	-	10186907																
				clear	82 %	-	-	10186912																

Beam angle				Cover	LOR	Order number																		
Very Wide Flood						white	silver	black																
<b>Optik 132 - VFL</b> <table border="1"> <thead> <tr> <th>Höhe [m]</th> <th>KegelØ [cm]</th> <th>E(0°) [lx/klm]</th> <th>E(C0) [lx/klm]</th> </tr> </thead> <tbody> <tr> <td>1</td> <td>117</td> <td>1027</td> <td>333</td> </tr> <tr> <td>2</td> <td>235</td> <td>257</td> <td>83</td> </tr> <tr> <td>3</td> <td>352</td> <td>114</td> <td>37</td> </tr> </tbody> </table>				Höhe [m]	KegelØ [cm]	E(0°) [lx/klm]	E(C0) [lx/klm]	1	117	1027	333	2	235	257	83	3	352	114	37					
Höhe [m]	KegelØ [cm]	E(0°) [lx/klm]	E(C0) [lx/klm]																					
1	117	1027	333																					
2	235	257	83																					
3	352	114	37																					
				without	86 %	-	-	10186908																
				clear	82 %	-	-	10186913																

Technical details as well as weight specifications and measurements have been prepared with care. Errors excepted. All dimensions in mm · LED service life data: L80/B10 at ambient temperature (ta) 25°C. Rated lamp service life 50,000h. Luminous flux and efficiency specifications are subject to a tolerance of +/- 10%. Min CRI Ra: >80 / >90 · Product images are used as an example and may differ from the original · We reserve the right to make changes, insofar as they serve progress. Oktalite Lichttechnik GmbH · Mathias-Brüggen-Str. 73 · 50829 Cologne · T +49 221 59767-0 · F +49 221 59767-40 · mail@oktalite.com · www.oktalite.com · 2020-09-28