



CANILO PLUS

TRACK LIGHT

CANILO Plus is the power package of the Canilo luminaire family. With up to 6,000 lumens it can be used wherever a high output is required – in rooms with high ceilings, for example, or where marked accents and a dramatic interplay of light and shadows are required.



Power package

- White light colours up to 6000 lm
- Special light spectrums for the fresh-food area up to 4000 lm



Efficient lighting

6 % more light and 34 % more efficiency (in comparison to HIT 70 W)



Elegant design

Classic design with elegant proportions – CANILO fits into every shop design



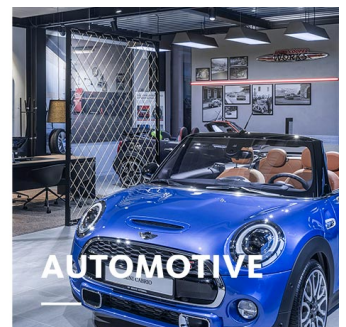
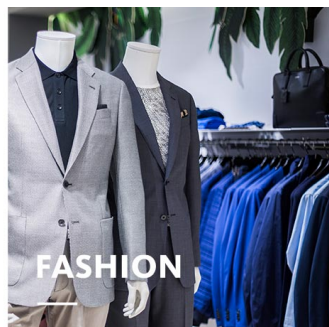
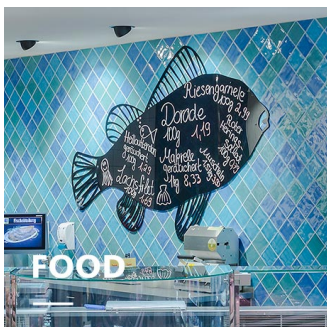
Well protected

Optional glass cover to protect from dirt



High degree of visual comfort







Always black anti-glare ring provides, as a design element, +F18 extremely high visual comfort



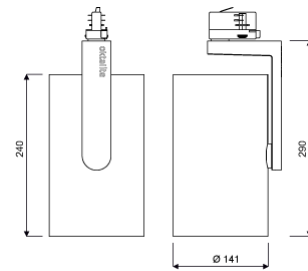
CANILO PLUS

oktalite

www.oktalite.com/canilo-plus-t

Type of luminaire	track light
Application areas	Accent lighting, High-level decoration
Pan/tilt range	355° turning range, 200° swivel range
Mounting	3P Power Track, not suitable for vertical mounting
Lighting technology	LED
LED Luminous Flux Class	3000 lm - 6000 lm
Light colour White	2700 K, 3000 K, 3000 K - Efficient White, 3000 K - Brilliant Colour, 3500 K, 4000 K
Light colour Food*	M, M+F, BF
Cooling	passive
Supply unit	Driver integrated
Luminaire colour	RAL 9005 jet black RAL 9006 white aluminium RAL 9016 traffic white Special colours on request
Surface	structure powder-coated
Nominal voltage	220 - 240 V, 50/60Hz
Lighting controls	on request
Weight	Approx. 3.0 kg
Components	 Luminaire housing  Optic
Test seal	   

* M = Meat,
M = Meat, F = Fish,
BF = Brilliant Food



Technical details as well as weight specifications and measurements have been prepared with care. Errors excepted. All dimensions in mm · LED service life data: L80/B10 at ambient temperature (ta) 25°C. Rated lamp service life 50,000h. Luminous flux and efficiency specifications are subject to a tolerance of +/- 10%. Min CRI Ra: >80 / >90 · Product images are used as an example and may differ from the original · We reserve the right to make changes, insofar as they serve progress. Oktalite Lichttechnik GmbH · Mathias-Brüggen-Str. 73 · 50829 Cologne · T +49 221 59767-0 · F +49 221 59767-40 · mail@oktalite.com · www.oktalite.com · 2020-09-28

**CANILO PLUS****oktalite**

LED Luminous Flux Class	Light colour	CRI R _a	system luminous flux*	System performance	Order number		
					white	silver	black
4000 lm	2700 K	81	3680 lm	28 W	10190082	10190083	10190084
	3000 K	83	3785 lm	28 W	10190085	10190086	10190087
	3000 K - Efficient White	94	3875 lm	34 W	10190088	10190089	10190090
	3000 K - Brilliant Colour	97	3900 lm	46 W	10190091	10190092	10190093
	3500 K	85	3860 lm	28 W	10190094	10190095	10190096
	4000 K	83	3990 lm	28 W	10190097	10190098	10190099
5000 lm	2700 K	81	4515 lm	36 W	10190100	10190101	10190102
	3000 K	83	4640 lm	36 W	10190103	10190104	10190105
	3000 K - Efficient White	94	4925 lm	46 W	10190106	10190107	10190108
	3500 K	85	4730 lm	36 W	10190109	10190110	10190111
	4000 K	83	4890 lm	36 W	10190112	10190113	10190114
6000 lm	2700 K	81	5480 lm	46 W	10190115	10190116	10190117
	3000 K	83	5635 lm	46 W	10190118	10190119	10190120
	3500 K	85	5745 lm	46 W	10190121	10190122	10190123
	4000 K	83	5935 lm	46 W	10190124	10190125	10190126
3000 lm	M	-	2840 lm	46 W	10190073	10190074	10190075
	M+F	-	2645 lm	46 W	10190076	10190077	10190078
4000 lm	BF	-	3575 lm	40 W	10213593	10213594	10213595

* System luminous flux based on medium flood reflector.



Efficient White: R₉ = 75, R_f = 91, R_g = 102



Brilliant Colour: R₉ = 94, R_f = 95, R_g = 104

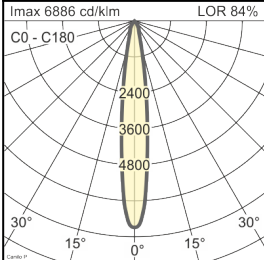
Technical details as well as weight specifications and measurements have been prepared with care. Errors excepted. All dimensions in mm · LED service life data: L80/B10 at ambient temperature (ta) 25°C. Rated lamp service life 50,000h. Luminous flux and efficiency specifications are subject to a tolerance of +/- 10%. Min CRI Ra: >80 / >90 · Product images are used as an example and may differ from the original · We reserve the right to make changes, insofar as they serve progress. Oktalite Lichttechnik GmbH · Mathias-Brüggen-Str. 73 · 50829 Cologne · T +49 221 59767-0 · F +49 221 59767-40 · mail@oktalite.com · www.oktalite.com · 2020-09-28

Optic Canilo Plus - LED

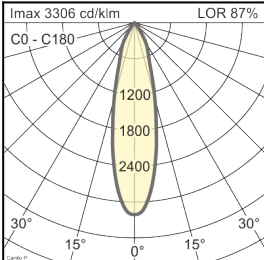
oktalite

Optic 3D faceted reflectors
Type interchangeable reflector system

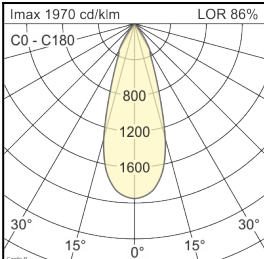
Beam angle				Cover	LOR	Order number		
Spot						white	silver	black
Optik 132 - SP								
Höhe [m]	KegelØ [cm]	E(0°) [lx/klm]	E(C0) [lx/klm]					
1	24	6842	3367	without	84 %	-	-	10186904
2	48	1711	842	clear	80 %	-	-	10186909
3	73	760	374					



Beam angle				Cover	LOR	Order number		
Medium Flood						white	silver	black
Optik 132 - MF								
Höhe [m]	KegelØ [cm]	E(0°) [lx/klm]	E(C0) [lx/klm]					
1	43	3357	1573	without	87 %	-	-	10186905
2	85	839	393	clear	83 %	-	-	10186910
3	128	373	175					



Beam angle				Cover	LOR	Order number		
Flood						white	silver	black
Optik 132 - FL								
Höhe [m]	KegelØ [cm]	E(0°) [lx/klm]	E(C0) [lx/klm]					
1	66	1981	857	without	86 %	-	-	10186906
2	132	495	214	clear	82 %	-	-	10186911
3	197	220	95					



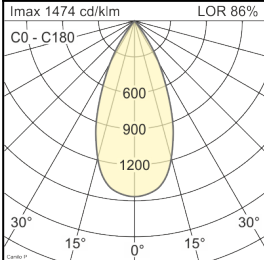
Technical details as well as weight specifications and measurements have been prepared with care. Errors excepted. All dimensions in mm · LED service life data: L80/B10 at ambient temperature (ta) 25°C. Rated lamp service life 50,000h. Luminous flux and efficiency specifications are subject to a tolerance of +/- 10%. Min CRI Ra: >80 / >90 · Product images are used as an example and may differ from the original · We reserve the right to make changes, insofar as they serve progress. Oktalite Lichttechnik GmbH · Mathias-Brüggen-Str. 73 · 50829 Cologne · T +49 221 59767-0 · F +49 221 59767-40 · mail@oktalite.com · www.oktalite.com · 2020-09-28

Optic Canilo Plus - LED

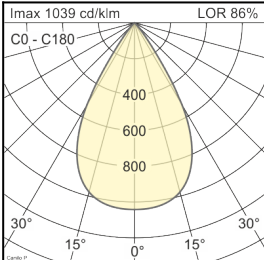
oktalite

Optic 3D faceted reflectors
 Type interchangeable reflector system

Beam angle				Cover	LOR	Order number		
Wide Flood						white	silver	black
Optik 132 - WFL								
Höhe [m]	KegelØ [cm]	E(0°) [lx/klm]	E(C0) [lx/klm]					
1	87	1437	554	without	86 %	-	-	10186907
2	175	359	139	clear	82 %	-	-	10186912
3	262	160	62					



Beam angle				Cover	LOR	Order number		
Very Wide Flood						white	silver	black
Optik 132 - VFL								
Höhe [m]	KegelØ [cm]	E(0°) [lx/klm]	E(C0) [lx/klm]					
1	117	1027	333	without	86 %	-	-	10186908
2	235	257	83	clear	82 %	-	-	10186913
3	352	114	37					



Technical details as well as weight specifications and measurements have been prepared with care. Errors excepted. All dimensions in mm · LED service life data: L80/B10 at ambient temperature (ta) 25°C. Rated lamp service life 50,000h. Luminous flux and efficiency specifications are subject to a tolerance of +/- 10%. Min CRI Ra: >80 / >90 · Product images are used as an example and may differ from the original · We reserve the right to make changes, insofar as they serve progress. Oktalite Lichttechnik GmbH · Mathias-Brüggen-Str. 73 · 50829 Cologne · T +49 221 59767-0 · F +49 221 59767-40 · mail@oktalite.com · www.oktalite.com · 2020-09-28