



AGIRA

RECESSED LUMINAIRE

It is a small structure with maximum flexibility. That characterises AGIRA since the spotlight can be swivelled round one axis and additionally can be rotated through 355 degrees and hence combined the advantages of a gimbal-mounted luminaire with those of a classic recessed spotlight. In that way the light purposefully reaches the goods and sets accents there. Optionally fitted with the ACTIVE LED module. This makes the precise adjustment of the light possible as regards intensity and colour temperature.



Optimum light distribution

Efficient faceted reflectors in SP, MF, FL, WFL, VWFL



Extensive variety

Six white light colours plus special light ranges available for the fresh food area



High flexibility

Can be tilted 30° in both directions and turned through 355° for optimum illumination of the goods



Optional accessories

Accessories: protective glass cover

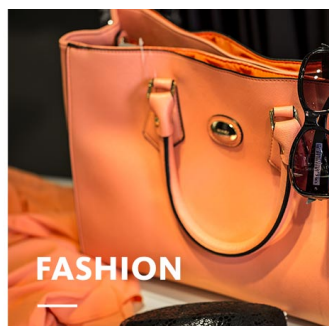


Intelligent light

Smart lighting management optionally with control line or wireless



FOOD



FASHION



SHOP

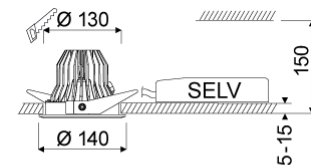


AUTOMOTIVE

AGIRA

www.oktalite.com/agira-r

| | |
|-------------------------|---|
| Type of luminaire | recessed luminaire |
| Application areas | Accent lighting, base illumination |
| Pan/tilt range | rotates through 355°, swivels through 30°/30° |
| Mounting | spring mounting |
| Ceiling thickness | 5 - 15 mm |
| Lighting technology | LED ^{IQ} BLE |
| LED Luminous Flux Class | 2000 lm - 4000 lm |
| Light colour White | 2700 K, 3000 K, 3000 K - Efficient White, 3000 K - Brilliant Colour, 3500 K, 4000 K, Active 2700-6000 K |
| Light colour Food* | M, M+F, BF |
| Cooling | passive |
| Supply unit | BLE-Driver separate |
| Luminaire colour | RAL 9005 jet black RAL 9006 white aluminium RAL 9016 traffic white Special colours on request |
| Surface | structure powder-coated |
| Nominal voltage | 220 - 240 V, 50/60Hz |
| Lighting controls | Bluetooth Low Energy |
| Installation | Recommended for modernization or new installation. In a BLE network up to 127 luminaires can be coupled. A stable Bluetooth connection depends on the particular local situation. In the case of this luminaire type it amounts to up to 25 m. |
| Weight | Approx. 0.8 kg |



| | |
|------------|---|
| Components | Luminaire housing Optic Supply unit |
|------------|---|

| | |
|-----------|--|
| Test seal | |
|-----------|--|

* M = Meat,
M = Meat, F = Fish,
BF = Brilliant Food

Technical details as well as weight specifications and measurements have been prepared with care. Errors excepted. All dimensions in mm · LED service life data: L80/B10 at ambient temperature (ta) 25°C. Rated lamp service life 50,000h. Luminous flux and efficiency specifications are subject to a tolerance of +/- 10%. Min CRI Ra: >80 / >90 · Product images are used as an example and may differ from the original · We reserve the right to make changes, insofar as they serve progress. Oktalite Lichttechnik GmbH · Mathias-Brüggen-Str. 73 · 50829 Cologne · T +49 221 59767-0 · F +49 221 59767-40 · mail@oktalite.com · www.oktalite.com · 2020-09-28



AGIRA

oktalite

| LED Luminous Flux Class | Light colour | CRI R _a | system luminous flux* | System performance | Order number | | |
|-------------------------|---------------------------|--------------------|-----------------------|--------------------|--------------|----------|----------|
| | | | | | white | silver | black |
| 3000 lm | 3000 K - Brilliant Colour | 97 | 2805 lm | 35 W | 10185852 | 10185853 | 10185854 |
| 4000 lm | 2700 K | 81 | 3585 lm | 31 W | 10185837 | 10185838 | 10185839 |
| | 3000 K | 83 | 3735 lm | 31 W | 10185840 | 10185841 | 10185842 |
| | 3000 K - Efficient White | 94 | 3695 lm | 37 W | 10185843 | 10185844 | 10185845 |
| | 3500 K | 85 | 3810 lm | 31 W | 10185846 | 10185847 | 10185848 |
| | 4000 K | 83 | 3885 lm | 31 W | 10185849 | 10185850 | 10185851 |
| 2000 lm | M | - | 1815 lm | 31 W | 10185828 | 10185829 | 10185830 |
| | M+F | - | 1710 lm | 31 W | 10185831 | 10185832 | 10185833 |
| 3000 lm | BF | - | 2645 lm | 31 W | 10213525 | 10213526 | 10213527 |
| 2500 lm | Active 2700-6000 K | - | - | 37 W | 10211059 | 10211060 | 10211061 |
| | 2700 K | 83 | 2085 lm | | | | |
| | 6000 K | 87 | 2415 lm | | | | |

Accessories

Order number

| | |
|---|----------|
| 4-way pushbutton coupler for recessed and surface-mounted boxes | 10195263 |
| Energy self-sufficient 4-way push-button, white | 10195262 |
| Motion and brightness sensor with 2 m cable and Europlug | 10195264 |
| Motion and brightness sensor with integrated safety socket, white | 10195265 |

* System luminous flux based on medium flood reflector.



Efficient White: R₉ = 75, R_r = 91, R_g = 102



Brilliant Colour: R₉ = 94, R_r = 95, R_g = 104

Technical details as well as weight specifications and measurements have been prepared with care. Errors excepted. All dimensions in mm · LED service life data: L80/B10 at ambient temperature (ta) 25°C. Rated lamp service life 50,000h. Luminous flux and efficiency specifications are subject to a tolerance of +/- 10%. Min CRI Ra: >80 / >90 · Product images are used as an example and may differ from the original · We reserve the right to make changes, insofar as they serve progress. Oktalite Lichttechnik GmbH · Mathias-Brüggen-Str. 73 · 50829 Cologne · T +49 221 59767-0 · F +49 221 59767-40 · mail@oktalite.com · www.oktalite.com · 2020-09-28

Optic Agira - LED^{IQ} BLE

oktalite

Optic 3D faceted reflectors
Type interchangeable reflector system

| Beam angle | | | | Cover | LOR | Order number | | |
|-------------------|--|--|--|---------|------|--------------|----------|----------|
| Spot | | | | | | white | silver | black |
| Agira - SP | | | | without | 86 % | 10186699 | 10186700 | 10186701 |
| | | | | clear | 82 % | 10186708 | 10186709 | 10186710 |

| Höhe [m] | KegelØ [cm] | E(0°) [lx/klm] | E(C0) [lx/klm] |
|----------|-------------|----------------|----------------|
| 1 | 26 | 5853 | 2896 |
| 2 | 51 | 1463 | 724 |
| 3 | 77 | 650 | 322 |

| Beam angle | | | | Cover | LOR | Order number | | |
|-------------------|--|--|--|---------|------|--------------|----------|----------|
| Medium Flood | | | | | | white | silver | black |
| Agira - MF | | | | without | 87 % | 10186702 | 10186703 | 10186704 |
| | | | | clear | 83 % | 10186711 | 10186712 | 10186713 |

| Höhe [m] | KegelØ [cm] | E(0°) [lx/klm] | E(C0) [lx/klm] |
|----------|-------------|----------------|----------------|
| 1 | 46 | 2805 | 1308 |
| 2 | 92 | 701 | 327 |
| 3 | 137 | 312 | 145 |

| Beam angle | | | | Cover | LOR | Order number | | |
|-------------------|--|--|--|---------|------|--------------|----------|----------|
| Flood | | | | | | white | silver | black |
| Agira - FL | | | | without | 86 % | 10186705 | 10186706 | 10186707 |
| | | | | clear | 82 % | 10186714 | 10186715 | 10186716 |

| Höhe [m] | KegelØ [cm] | E(0°) [lx/klm] | E(C0) [lx/klm] |
|----------|-------------|----------------|----------------|
| 1 | 66 | 1966 | 850 |
| 2 | 132 | 492 | 212 |
| 3 | 197 | 218 | 94 |

Technical details as well as weight specifications and measurements have been prepared with care. Errors excepted. All dimensions in mm · LED service life data: L80/B10 at ambient temperature (ta) 25°C. Rated lamp service life 50,000h. Luminous flux and efficiency specifications are subject to a tolerance of +/- 10%. Min CRI Ra: >80 / >90 · Product images are used as an example and may differ from the original · We reserve the right to make changes, insofar as they serve progress. Oktalite Lichttechnik GmbH · Mathias-Brüggen-Str. 73 · 50829 Cologne · T +49 221 59767-0 · F +49 221 59767-40 · mail@oktalite.com · www.oktalite.com · 2020-09-28

Optic Agira - LED ^{IQ} BLE

oktalite

Optic 3D faceted reflectors
Type interchangeable reflector system

| Beam angle | | | | Cover | LOR | Order number | | | | | | | | | | | | | | | | | | |
|---|-------------|----------------|----------------|----------|-------------|----------------|----------------|----------|----|------|-----|---|-----|-----|-----|---|-----|-----|----|--|--|--|--|--|
| Wide Flood | | | | | | white | silver | black | | | | | | | | | | | | | | | | |
| Agira - WFL <table border="1"> <thead> <tr> <th>Höhe [m]</th> <th>KegelØ [cm]</th> <th>E(0°) [lx/klm]</th> <th>E(C0) [lx/klm]</th> </tr> </thead> <tbody> <tr> <td>1</td> <td>84</td> <td>1506</td> <td>590</td> </tr> <tr> <td>2</td> <td>169</td> <td>376</td> <td>148</td> </tr> <tr> <td>3</td> <td>253</td> <td>167</td> <td>66</td> </tr> </tbody> </table> | | | | Höhe [m] | KegelØ [cm] | E(0°) [lx/klm] | E(C0) [lx/klm] | 1 | 84 | 1506 | 590 | 2 | 169 | 376 | 148 | 3 | 253 | 167 | 66 | | | | | |
| Höhe [m] | KegelØ [cm] | E(0°) [lx/klm] | E(C0) [lx/klm] | | | | | | | | | | | | | | | | | | | | | |
| 1 | 84 | 1506 | 590 | | | | | | | | | | | | | | | | | | | | | |
| 2 | 169 | 376 | 148 | | | | | | | | | | | | | | | | | | | | | |
| 3 | 253 | 167 | 66 | | | | | | | | | | | | | | | | | | | | | |
| | | | | without | 86 % | 10186717 | 10186718 | 10186719 | | | | | | | | | | | | | | | | |
| | | | | clear | 82 % | 10186723 | 10186724 | 10186725 | | | | | | | | | | | | | | | | |

| Beam angle | | | | Cover | LOR | Order number | | | | | | | | | | | | | | | | | | |
|---|-------------|----------------|----------------|----------|-------------|----------------|----------------|----------|-----|------|-----|---|-----|-----|----|---|-----|-----|----|--|--|--|--|--|
| Very Wide Flood | | | | | | white | silver | black | | | | | | | | | | | | | | | | |
| Agira - VFL <table border="1"> <thead> <tr> <th>Höhe [m]</th> <th>KegelØ [cm]</th> <th>E(0°) [lx/klm]</th> <th>E(C0) [lx/klm]</th> </tr> </thead> <tbody> <tr> <td>1</td> <td>114</td> <td>1064</td> <td>349</td> </tr> <tr> <td>2</td> <td>228</td> <td>266</td> <td>87</td> </tr> <tr> <td>3</td> <td>342</td> <td>118</td> <td>39</td> </tr> </tbody> </table> | | | | Höhe [m] | KegelØ [cm] | E(0°) [lx/klm] | E(C0) [lx/klm] | 1 | 114 | 1064 | 349 | 2 | 228 | 266 | 87 | 3 | 342 | 118 | 39 | | | | | |
| Höhe [m] | KegelØ [cm] | E(0°) [lx/klm] | E(C0) [lx/klm] | | | | | | | | | | | | | | | | | | | | | |
| 1 | 114 | 1064 | 349 | | | | | | | | | | | | | | | | | | | | | |
| 2 | 228 | 266 | 87 | | | | | | | | | | | | | | | | | | | | | |
| 3 | 342 | 118 | 39 | | | | | | | | | | | | | | | | | | | | | |
| | | | | without | 86 % | 10186720 | 10186721 | 10186722 | | | | | | | | | | | | | | | | |
| | | | | clear | 82 % | 10186726 | 10186727 | 10186728 | | | | | | | | | | | | | | | | |

Technical details as well as weight specifications and measurements have been prepared with care. Errors excepted. All dimensions in mm · LED service life data: L80/B10 at ambient temperature (ta) 25°C. Rated lamp service life 50,000h. Luminous flux and efficiency specifications are subject to a tolerance of +/- 10%. Min CRI Ra: >80 / >90 · Product images are used as an example and may differ from the original · We reserve the right to make changes, insofar as they serve progress. Oktalite Lichttechnik GmbH · Mathias-Brüggen-Str. 73 · 50829 Cologne · T +49 221 59767-0 · F +49 221 59767-40 · mail@oktalite.com · www.oktalite.com · 2020-09-28



Supply unit - LED^{IQ} BLE

BLE-Driver

oktalite

| | |
|------------------------|-----------------------|
| Mains connection | GST 18i3 |
| Cable length secondary | 400 mm |
| Nominal voltage | 220 - 240 V, 50/60Hz |
| Lighting controls | Bluetooth Low Energy |
| Lighting technology | LED ^{IQ} BLE |

| Lighting technology | Luminaire connection | Output | System performance | Order number |
|---------------------|----------------------|--------|--------------------|--------------|
| LED IQ BLE | RNV | 800 mA | 31 W | 10207880 |
| LED IQ BLE | RNV | 900 mA | 35 W | 10210602 |
| LED IQ BLE | RNV | 950 mA | 37 W | 10207881 |
| LED IQ BLE | R4L (Active) | 900 mA | 37 W | 10211597 |

Technical details as well as weight specifications and measurements have been prepared with care. Errors excepted. All dimensions in mm · LED service life data: L80/B10 at ambient temperature (ta) 25°C. Rated lamp service life 50,000h. Luminous flux and efficiency specifications are subject to a tolerance of +/- 10%. Min CRI Ra: >80 / >90 · Product images are used as an example and may differ from the original · We reserve the right to make changes, insofar as they serve progress. Oktalite Lichttechnik GmbH · Mathias-Brüggen-Str. 73 · 50829 Cologne · T +49 221 59767-0 · F +49 221 59767-40 · mail@oktalite.com · www.oktalite.com · 2020-09-28