



AGIRA

RECESSED LUMINAIRE

It is a small structure with maximum flexibility. That characterises AGIRA since the spotlight can be swivelled round one axis and additionally can be rotated through 355 degrees and hence combined the advantages of a gimbal-mounted luminaire with those of a classic recessed spotlight. In that way the light purposefully reaches the goods and sets accents there. Optionally fitted with the ACTIVE LED module. This makes the precise adjustment of the light possible as regards intensity and colour temperature.



Optimum light distribution

Efficient faceted reflectors in SP, MF, FL, WFL, VWFL



Extensive variety

Six white light colours plus special light ranges available for the fresh food area



High flexibility

Can be tilted 30° in both directions and turned through 355° for optimum illumination of the goods



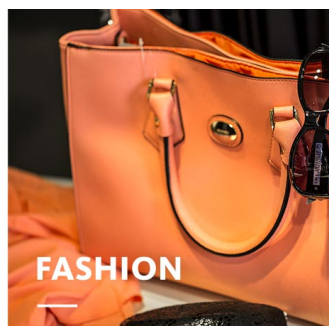
Optional accessories

Accessories: protective glass cover



Intelligent light









Smart lighting management optionally with control line or wireless



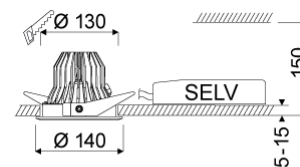
AGIRA

oktalite

www.oktalite.com/agira-r

Type of luminaire	recessed luminaire
Application areas	Accent lighting, base illumination
Pan/tilt range	rotates through 355°, swivels through 30°/30°
Mounting	spring mounting
Ceiling thickness	5 - 15 mm
Lighting technology	LED IQ DALI
LED Luminous Flux Class	2000 lm - 4000 lm
Light colour White	2700 K, 3000 K, 3000 K - Efficient White, 3000 K - Brilliant Colour, 3500 K, 4000 K, Active 2700-6000 K
Light colour Food*	M, M+F, BF
Cooling	passive
Supply unit	DALI driver separate
Luminaire colour	RAL 9005 jet black RAL 9006 white aluminium RAL 9016 traffic white Special colours on request
Surface	structure powder-coated
Nominal voltage	220 - 240 V, 50/60Hz
Lighting controls	DALI DT6, DALI DT8 (Active)
Installation	Recommended for new installation.
Weight	Approx. 0.8 kg
Components	 Luminaire housing  Optic  Supply unit
Test seal	    

* M = Meat,
M = Meat, F = Fish,
BF = Brilliant Food



Technical details as well as weight specifications and measurements have been prepared with care. Errors excepted. All dimensions in mm · LED service life data: L80/B10 at ambient temperature (ta) 25°C. Rated lamp service life 50,000h. Luminous flux and efficiency specifications are subject to a tolerance of +/- 10%. Min CRI Ra: >80 / >90 · Product images are used as an example and may differ from the original · We reserve the right to make changes, insofar as they serve progress. Oktalite Lichttechnik GmbH · Mathias-Brüggen-Str. 73 · 50829 Cologne · T +49 221 59767-0 · F +49 221 59767-40 · mail@oktalite.com · www.oktalite.com · 2020-09-28

**AGIRA****oktalite**

LED Luminous Flux Class	Light colour	CRI R _a	system luminous flux*	System performance	Order number		
					white	silver	black
3000 lm	3000 K - Brilliant Colour	97	2805 lm	35 W	10185852	10185853	10185854
4000 lm	2700 K	81	3585 lm	31 W	10185837	10185838	10185839
	3000 K	83	3735 lm	31 W	10185840	10185841	10185842
	3000 K - Efficient White	94	3695 lm	37 W	10185843	10185844	10185845
	3500 K	85	3810 lm	31 W	10185846	10185847	10185848
	4000 K	83	3885 lm	31 W	10185849	10185850	10185851
2000 lm	M	-	1815 lm	31 W	10185828	10185829	10185830
	M+F	-	1710 lm	31 W	10185831	10185832	10185833
3000 lm	BF	-	2645 lm	31 W	10213525	10213526	10213527
2500 lm	Active 2700-6000 K	-	-	37 W	10211059	10211060	10211061
	2700 K	83	2085 lm				
	6000 K	87	2415 lm				

* System luminous flux based on medium flood reflector.



Efficient White: R₉ = 75, R_f = 91, R_g = 102



Brilliant Colour: R₉ = 94, R_f = 95, R_g = 104

Technical details as well as weight specifications and measurements have been prepared with care. Errors excepted. All dimensions in mm · LED service life data: L80/B10 at ambient temperature (ta) 25°C. Rated lamp service life 50,000h. Luminous flux and efficiency specifications are subject to a tolerance of +/- 10%. Min CRI Ra: >80 / >90 · Product images are used as an example and may differ from the original · We reserve the right to make changes, insofar as they serve progress. Oktalite Lichttechnik GmbH · Mathias-Brüggen-Str. 73 · 50829 Cologne · T +49 221 59767-0 · F +49 221 59767-40 · mail@oktalite.com · www.oktalite.com · 2020-09-28



Optic Agira - LED^{IQ} DALI

oktalite

Optic 3D faceted reflectors
Type interchangeable reflector system

Beam angle				Cover	LOR	Order number		
Spot						white	silver	black
Agira - SP								
Höhe [m]	KegelØ [cm]	E(0°) [lx/klm]	E(C0) [lx/klm]					
1	26	5853	2896	without	86 %	10186699	10186700	10186701
2	51	1463	724	clear	82 %	10186708	10186709	10186710
3	77	650	322					

Beam angle				Cover	LOR	Order number		
Medium Flood						white	silver	black
Agira - MF								
Höhe [m]	KegelØ [cm]	E(0°) [lx/klm]	E(C0) [lx/klm]					
1	46	2805	1308	without	87 %	10186702	10186703	10186704
2	92	701	327	clear	83 %	10186711	10186712	10186713
3	137	312	145					

Beam angle				Cover	LOR	Order number		
Flood						white	silver	black
Agira - FL								
Höhe [m]	KegelØ [cm]	E(0°) [lx/klm]	E(C0) [lx/klm]					
1	66	1966	850	without	86 %	10186705	10186706	10186707
2	132	492	212	clear	82 %	10186714	10186715	10186716
3	197	218	94					

Technical details as well as weight specifications and measurements have been prepared with care. Errors excepted. All dimensions in mm · LED service life data: L80/B10 at ambient temperature (ta) 25°C. Rated lamp service life 50,000h. Luminous flux and efficiency specifications are subject to a tolerance of +/- 10%. Min CRI Ra: >80 / >90 · Product images are used as an example and may differ from the original · We reserve the right to make changes, insofar as they serve progress. Oktalite Lichttechnik GmbH · Mathias-Brüggen-Str. 73 · 50829 Cologne · T +49 221 59767-0 · F +49 221 59767-40 · mail@oktalite.com · www.oktalite.com · 2020-09-28



Optic Agira - LED ^{IQ} DALI

oktalite

Optic 3D faceted reflectors
Type interchangeable reflector system

Beam angle				Cover	LOR	Order number		
Wide Flood						white	silver	black
Agira - WFL								
Höhe [m]	KegelØ [cm]	E(0°) [lx/klm]	E(C0) [lx/klm]					
1	84	1506	590	without	86 %	10186717	10186718	10186719
2	169	376	148	clear	82 %	10186723	10186724	10186725
3	253	167	66					

Beam angle				Cover	LOR	Order number		
Very Wide Flood						white	silver	black
Agira - VFL								
Höhe [m]	KegelØ [cm]	E(0°) [lx/klm]	E(C0) [lx/klm]					
1	114	1064	349	without	86 %	10186720	10186721	10186722
2	228	266	87	clear	82 %	10186726	10186727	10186728
3	342	118	39					

Technical details as well as weight specifications and measurements have been prepared with care. Errors excepted. All dimensions in mm · LED service life data: L80/B10 at ambient temperature (ta) 25°C. Rated lamp service life 50,000h. Luminous flux and efficiency specifications are subject to a tolerance of +/- 10%. Min CRI Ra: >80 / >90 · Product images are used as an example and may differ from the original · We reserve the right to make changes, insofar as they serve progress. Oktalite Lichttechnik GmbH · Mathias-Brüggen-Str. 73 · 50829 Cologne · T +49 221 59767-0 · F +49 221 59767-40 · mail@oktalite.com · www.oktalite.com · 2020-09-28



Supply unit - LED^{IQ} DALI

DALI driver

oktalite

Connection type	Pre-wired plug-in connectivity
Mains connection	GST 18i3
Cable length secondary	400 mm
Nominal voltage	220 - 240 V, 50/60Hz
protection	IP20
protection class	I, II
Lighting controls	DALI DT6, DALI DT8 (Active)
Lighting technology	LED ^{IQ} DALI

Lighting technology	Luminaire connection	Output	System performance	Order number
LED IQ DALI	RNV	800 mA	31 W	10185636
LED IQ DALI	RNV	900 mA	35 W	10185638
LED IQ DALI	RNV	950 mA	37 W	10185640
LED IQ DALI	R4L (Active)	900 mA	37 W	10211596

Technical details as well as weight specifications and measurements have been prepared with care. Errors excepted. All dimensions in mm · LED service life data: L80/B10 at ambient temperature (ta) 25°C. Rated lamp service life 50,000h. Luminous flux and efficiency specifications are subject to a tolerance of +/- 10%. Min CRI Ra: >80 / >90 · Product images are used as an example and may differ from the original · We reserve the right to make changes, insofar as they serve progress. Oktalite Lichttechnik GmbH · Mathias-Brüggen-Str. 73 · 50829 Cologne · T +49 221 59767-0 · F +49 221 59767-40 · mail@oktalite.com · www.oktalite.com · 2020-09-28