



AGIRA

RECESSED LUMINAIRE

It is a small structure with maximum flexibility. That characterises AGIRA since the spotlight can be swivelled round one axis and additionally can be rotated through 355 degrees and hence combined the advantages of a gimbal-mounted luminaire with those of a classic recessed spotlight. In that way the light purposefully reaches the goods and sets accents there. Optionally fitted with the ACTIVE LED module. This makes the precise adjustment of the light possible as regards intensity and colour temperature.



Optimum light distribution

Efficient faceted reflectors in SP, MF, FL, WFL, VWFL



Extensive variety

Six white light colours plus special light ranges available for the fresh food area



High flexibility

Can be tilted 30° in both directions and turned through 355° for optimum illumination of the goods



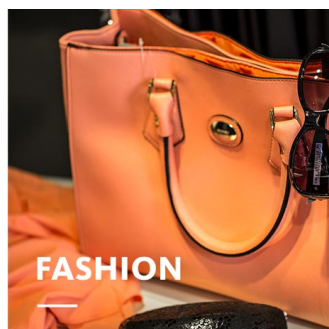
Optional accessories

Accessories: protective glass cover



Intelligent light

Smart lighting management optionally with control line or wireless

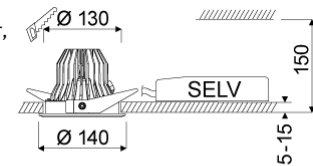





AGIRA

oktalite

www.oktalite.com/agira-r

Type of luminaire	recessed luminaire
Application areas	Accent lighting, base illumination
Pan/tilt range	rotates through 355°, swivels through 30°/30°
Mounting	spring mounting
Ceiling thickness	5 - 15 mm
Lighting technology	LED
LED Luminous Flux Class	1500 lm - 4000 lm
Light colour White	2700 K, 3000 K, 3000 K - Efficient White, 3000 K - Brilliant Colour, 3500 K, 4000 K
Light colour Food*	M, M+F, BF
Cooling	passive
Supply unit	Driver separate
Luminaire colour	RAL 9005 jet black RAL 9006 white aluminium RAL 9016 traffic white Special colours on request
Surface	structure powder-coated
Nominal voltage	220 - 240 V, 50/60Hz
Lighting controls	on request
Weight	Approx. 0.8 kg



Components	 Luminaire housing  Optic  Supply unit
------------	---

Test seal	   
-----------	---

* M = Meat,
M = Meat, F = Fish,
BF = Brilliant Food

Technical details as well as weight specifications and measurements have been prepared with care. Errors excepted. All dimensions in mm · LED service life data: L80/B10 at ambient temperature (ta) 25°C. Rated lamp service life 50,000h. Luminous flux and efficiency specifications are subject to a tolerance of +/- 10%. Min CRI Ra: >80 / >90 · Product images are used as an example and may differ from the original · We reserve the right to make changes, insofar as they serve progress. Oktalite Lichttechnik GmbH · Mathias-Brüggen-Str. 73 · 50829 Cologne · T +49 221 59767-0 · F +49 221 59767-40 · mail@oktalite.com · www.oktalite.com · 2020-09-28

**AGIRA****oktalite**

LED Luminous Flux Class	Light colour	CRI R _a	system luminous flux*	System performance	Order number		
					white	silver	black
2000 lm	3000 K - Efficient White	94	2010 lm	17 W	10185843	10185844	10185845
	3000 K - Brilliant Colour	97	1885 lm	21 W	10185852	10185853	10185854
3000 lm	2700 K	81	2840 lm	23 W	10185837	10185838	10185839
	3000 K	83	2960 lm	23 W	10185840	10185841	10185842
	3000 K - Efficient White	94	2910 lm	27 W	10185843	10185844	10185845
	3000 K - Brilliant Colour	97	2805 lm	35 W	10185852	10185853	10185854
	3500 K	85	3015 lm	23 W	10185846	10185847	10185848
	4000 K	83	3075 lm	23 W	10185849	10185850	10185851
4000 lm	2700 K	81	3585 lm	31 W	10185837	10185838	10185839
	3000 K	83	3735 lm	31 W	10185840	10185841	10185842
	3000 K - Efficient White	94	3695 lm	37 W	10185843	10185844	10185845
	3500 K	85	3810 lm	31 W	10185846	10185847	10185848
	4000 K	83	3885 lm	31 W	10185849	10185850	10185851
1500 lm	M	-	1435 lm	23 W	10185828	10185829	10185830
	M+F	-	1355 lm	23 W	10185831	10185832	10185833
2000 lm	M	-	1815 lm	31 W	10185828	10185829	10185830
	M+F	-	1710 lm	31 W	10185831	10185832	10185833
	BF	-	1800 lm	19 W	10213525	10213526	10213527
3000 lm	BF	-	2645 lm	31 W	10213525	10213526	10213527

* System luminous flux based on medium flood reflector.



Efficient White: R_s = 75, R_r = 91, R_g = 102



Brilliant Colour: R_s = 94, R_r = 95, R_g = 104

Technical details as well as weight specifications and measurements have been prepared with care. Errors excepted. All dimensions in mm · LED service life data: L80/B10 at ambient temperature (ta) 25°C. Rated lamp service life 50,000h. Luminous flux and efficiency specifications are subject to a tolerance of +/- 10%. Min CRI Ra: >80 / >90 · Product images are used as an example and may differ from the original · We reserve the right to make changes, insofar as they serve progress. Oktalite Lichttechnik GmbH · Mathias-Brüggen-Str. 73 · 50829 Cologne · T +49 221 59767-0 · F +49 221 59767-40 · mail@oktalite.com · www.oktalite.com · 2020-09-28

Optic Agira - LED

oktalite

Optic 3D faceted reflectors
Type interchangeable reflector system

Beam angle				Cover	LOR	Order number																		
Spot						white	silver	black																
Agira - SP <table border="1"> <thead> <tr> <th>Höhe [m]</th> <th>KegelØ [cm]</th> <th>E(0°) [lx/klm]</th> <th>E(C0) [lx/klm]</th> </tr> </thead> <tbody> <tr> <td>1</td> <td>26</td> <td>5853</td> <td>2896</td> </tr> <tr> <td>2</td> <td>51</td> <td>1463</td> <td>724</td> </tr> <tr> <td>3</td> <td>77</td> <td>650</td> <td>322</td> </tr> </tbody> </table>				Höhe [m]	KegelØ [cm]	E(0°) [lx/klm]	E(C0) [lx/klm]	1	26	5853	2896	2	51	1463	724	3	77	650	322					
Höhe [m]	KegelØ [cm]	E(0°) [lx/klm]	E(C0) [lx/klm]																					
1	26	5853	2896																					
2	51	1463	724																					
3	77	650	322																					
				without	86 %	10186699	10186700	10186701																
				clear	82 %	10186708	10186709	10186710																
Beam angle				Cover	LOR	Order number																		
Medium Flood						white	silver	black																
Agira - MF <table border="1"> <thead> <tr> <th>Höhe [m]</th> <th>KegelØ [cm]</th> <th>E(0°) [lx/klm]</th> <th>E(C0) [lx/klm]</th> </tr> </thead> <tbody> <tr> <td>1</td> <td>46</td> <td>2805</td> <td>1308</td> </tr> <tr> <td>2</td> <td>92</td> <td>701</td> <td>327</td> </tr> <tr> <td>3</td> <td>137</td> <td>312</td> <td>145</td> </tr> </tbody> </table>				Höhe [m]	KegelØ [cm]	E(0°) [lx/klm]	E(C0) [lx/klm]	1	46	2805	1308	2	92	701	327	3	137	312	145					
Höhe [m]	KegelØ [cm]	E(0°) [lx/klm]	E(C0) [lx/klm]																					
1	46	2805	1308																					
2	92	701	327																					
3	137	312	145																					
				without	87 %	10186702	10186703	10186704																
				clear	83 %	10186711	10186712	10186713																
Beam angle				Cover	LOR	Order number																		
Flood						white	silver	black																
Agira - FL <table border="1"> <thead> <tr> <th>Höhe [m]</th> <th>KegelØ [cm]</th> <th>E(0°) [lx/klm]</th> <th>E(C0) [lx/klm]</th> </tr> </thead> <tbody> <tr> <td>1</td> <td>66</td> <td>1966</td> <td>850</td> </tr> <tr> <td>2</td> <td>132</td> <td>492</td> <td>212</td> </tr> <tr> <td>3</td> <td>197</td> <td>218</td> <td>94</td> </tr> </tbody> </table>				Höhe [m]	KegelØ [cm]	E(0°) [lx/klm]	E(C0) [lx/klm]	1	66	1966	850	2	132	492	212	3	197	218	94					
Höhe [m]	KegelØ [cm]	E(0°) [lx/klm]	E(C0) [lx/klm]																					
1	66	1966	850																					
2	132	492	212																					
3	197	218	94																					
				without	86 %	10186705	10186706	10186707																
				clear	82 %	10186714	10186715	10186716																

Technical details as well as weight specifications and measurements have been prepared with care. Errors excepted. All dimensions in mm · LED service life data: L80/B10 at ambient temperature (ta) 25°C. Rated lamp service life 50,000h. Luminous flux and efficiency specifications are subject to a tolerance of +/- 10%. Min CRI Ra: >80 / >90 · Product images are used as an example and may differ from the original · We reserve the right to make changes, insofar as they serve progress. Oktalite Lichttechnik GmbH · Mathias-Brüggen-Str. 73 · 50829 Cologne · T +49 221 59767-0 · F +49 221 59767-40 · mail@oktalite.com · www.oktalite.com · 2020-09-28

Optic Agira - LED

oktalite

Optic 3D faceted reflectors
 Type interchangeable reflector system

Beam angle				Cover	LOR	Order number																		
Wide Flood						white	silver	black																
Agira - WFL <table border="1"> <thead> <tr> <th>Höhe [m]</th> <th>KegelØ [cm]</th> <th>E(0°) [lx/klm]</th> <th>E(C0) [lx/klm]</th> </tr> </thead> <tbody> <tr> <td>1</td> <td>84</td> <td>1506</td> <td>590</td> </tr> <tr> <td>2</td> <td>169</td> <td>376</td> <td>148</td> </tr> <tr> <td>3</td> <td>253</td> <td>167</td> <td>66</td> </tr> </tbody> </table>				Höhe [m]	KegelØ [cm]	E(0°) [lx/klm]	E(C0) [lx/klm]	1	84	1506	590	2	169	376	148	3	253	167	66					
Höhe [m]	KegelØ [cm]	E(0°) [lx/klm]	E(C0) [lx/klm]																					
1	84	1506	590																					
2	169	376	148																					
3	253	167	66																					
				without	86 %	10186717	10186718	10186719																
				clear	82 %	10186723	10186724	10186725																

Beam angle				Cover	LOR	Order number																		
Very Wide Flood						white	silver	black																
Agira - VFL <table border="1"> <thead> <tr> <th>Höhe [m]</th> <th>KegelØ [cm]</th> <th>E(0°) [lx/klm]</th> <th>E(C0) [lx/klm]</th> </tr> </thead> <tbody> <tr> <td>1</td> <td>114</td> <td>1064</td> <td>349</td> </tr> <tr> <td>2</td> <td>228</td> <td>266</td> <td>87</td> </tr> <tr> <td>3</td> <td>342</td> <td>118</td> <td>39</td> </tr> </tbody> </table>				Höhe [m]	KegelØ [cm]	E(0°) [lx/klm]	E(C0) [lx/klm]	1	114	1064	349	2	228	266	87	3	342	118	39					
Höhe [m]	KegelØ [cm]	E(0°) [lx/klm]	E(C0) [lx/klm]																					
1	114	1064	349																					
2	228	266	87																					
3	342	118	39																					
				without	86 %	10186720	10186721	10186722																
				clear	82 %	10186726	10186727	10186728																

Technical details as well as weight specifications and measurements have been prepared with care. Errors excepted. All dimensions in mm · LED service life data: L80/B10 at ambient temperature (ta) 25°C. Rated lamp service life 50,000h. Luminous flux and efficiency specifications are subject to a tolerance of +/- 10%. Min CRI Ra: >80 / >90 · Product images are used as an example and may differ from the original · We reserve the right to make changes, insofar as they serve progress. Oktalite Lichttechnik GmbH · Mathias-Brüggen-Str. 73 · 50829 Cologne · T +49 221 59767-0 · F +49 221 59767-40 · mail@oktalite.com · www.oktalite.com · 2020-09-28



Supply unit - LED

Driver

oktalite

Connection type	Pre-wired plug-in connectivity
Mains connection	GST 18i3
Cable length secondary	400 mm
Nominal voltage	220 - 240 V, 50/60Hz
protection	IP20
protection class	I, II
Lighting controls	on request
Lighting technology	LED

Lighting technology	Luminaire connection	Output	System performance	Order number
LED	RNV	450 mA	17 W	10211947
LED	RNV	500 mA	19 W	10211948
LED	RNV	550 mA	21 W	10211949
LED	RNV	600 mA	23 W	10211950
LED	RNV	700 mA	27 W	10211952
LED	RNV	800 mA	31 W	10211954
LED	RNV	900 mA	35 W	10211956
LED	RNV	950 mA	37 W	10211957

Technical details as well as weight specifications and measurements have been prepared with care. Errors excepted. All dimensions in mm · LED service life data: L80/B10 at ambient temperature (ta) 25°C. Rated lamp service life 50,000h. Luminous flux and efficiency specifications are subject to a tolerance of +/- 10%. Min CRI Ra: >80 / >90 · Product images are used as an example and may differ from the original · We reserve the right to make changes, insofar as they serve progress. Oktalite Lichttechnik GmbH · Mathias-Brüggen-Str. 73 · 50829 Cologne · T +49 221 59767-0 · F +49 221 59767-40 · mail@oktalite.com · www.oktalite.com · 2020-09-28