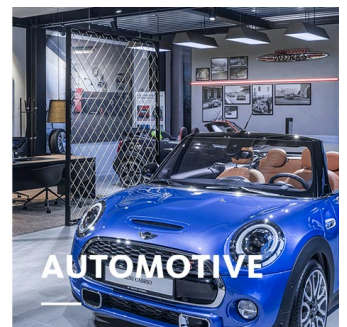
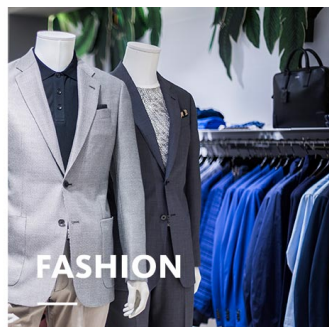
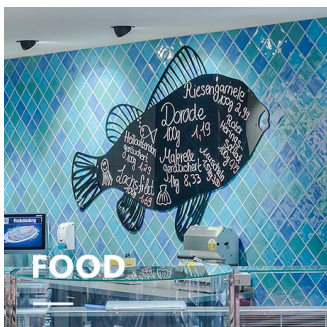




FANO MINI

TRACK MOUNTED LUMINAIRES

FANO MINI's distinguishing feature is its cubic, linear design. The perfect supplement to the successful product family in miniature format with almost closed housing. Flexible in use and particularly suitable for low ceiling heights.

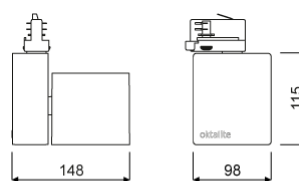


FANO MINI

oktalite



www.oktalite.com/fano-mini-t

Type of luminaire	Track mounted luminaires
Application areas	Accent lighting
Pan/tilt range	355° turning range, 180° swivel range
Mounting	3-circuit power track adapter, not suitable for vertical mounting
Lighting technology	LED ^{IQ}
Lumen category	2000 lm - 4000 lm
Light colour White	2700 K, 3000 K, 3000 K - Efficient White, 3000 K - Brilliant Colour, 3500 K, 4000 K
Light colour Food*	B+V+C, M, M+F
Cooling	passive
Supply unit	DALI driver integrated
Luminaire colour	RAL 9005 jet black RAL 9006 white aluminium RAL 9016 traffic white Special colours on request



Surface	structure powder-coated
Nominal voltage	220 - 240 V, 50/60Hz
Lighting controls	DALI
Weight	Approx. 1.9 kg

Components

-  Luminaire housing
-  Optic

Test seal



* B = Bakery, V = Vegetable, C = Cheese,
M = Meat,
M = Meat, F = Fish

Technical details as well as weight specifications and measurements have been prepared with care. Errors excepted. All dimensions in mm · LED service life data: L80/B10 at ambient temperature (ta) 25°C. Rated lamp service life 50,000h. Luminous flux and efficiency specifications are subject to a tolerance of +/- 10%. Min CRI Ra: >80 / >90 · Product images are used as an example and may differ from the original · We reserve the right to make changes, insofar as they serve progress. Oktalite Lichttechnik GmbH · Mathias-Brüggen-Str. 73 · 50829 Cologne · T +49 221 59767-0 · F +49 221 59767-40 · mail@oktalite.com · www.oktalite.com · 2019-06-25

**FANO MINI****oktalite**

Lumen category	Light colour	CRI R _a	system luminous flux*	System performance	Order number		
					white	silver	black
3000 lm	3000 K - Brilliant Colour	96	2615 lm	35 W	10188110	10188111	10188112
4000 lm	2700 K	81	3395 lm	31 W	10188113	10188114	10188115
4000 lm	3000 K	83	3535 lm	31 W	10188116	10188117	10188118
4000 lm	3000 K - Efficient White	94	3475 lm	37 W	10188119	10188120	10188121
4000 lm	3500 K	85	3605 lm	31 W	10188122	10188123	10188124
4000 lm	4000 K	83	3675 lm	31 W	10188125	10188126	10188127
2000 lm	M	-	1715 lm	31 W	10188101	10188102	10188103
2000 lm	M+F	-	1620 lm	31 W	10188104	10188105	10188106
4000 lm	B+V+C	-	3195 lm	41 W	10188107	10188108	10188109

* System luminous flux based on medium flood reflector in silver.

Efficient White: R₉ = 75, R_r = 91, R_g = 102

Brilliant Colour: R₉ = 92, R_r = 93, R_g = 106

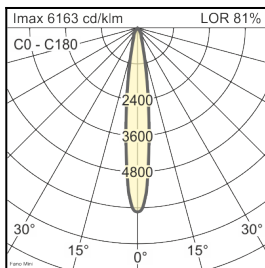
Technical details as well as weight specifications and measurements have been prepared with care. Errors excepted. All dimensions in mm · LED service life data: L80/B10 at ambient temperature (ta) 25°C. Rated lamp service life 50,000h. Luminous flux and efficiency specifications are subject to a tolerance of +/- 10%. Min CRI Ra: >80 / >90 · Product images are used as an example and may differ from the original · We reserve the right to make changes, insofar as they serve progress. Oktalite Lichttechnik GmbH · Mathias-Brüggen-Str. 73 · 50829 Cologne · T +49 221 59767-0 · F +49 221 59767-40 · mail@oktalite.com · www.oktalite.com · 2019-06-25

Optic FANO MINI - LED^{IQ}

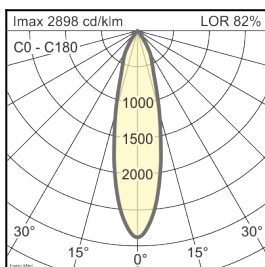
oktalite

Version	interchangeable reflector system
Mounting	Easy optic plate
Reflector colour	silber
Lighting technology	LED ^{IQ}

Beam angle Spot	Type of reflector	Cover / filter	LOR	Order number																		
				white	silver	black																
Fano Mini - SP <table border="1"> <thead> <tr> <th>Höhe [m]</th> <th>Kegel Ø [cm]</th> <th>E(0°) [lx/klm]</th> <th>E(C0) [lx/klm]</th> </tr> </thead> <tbody> <tr> <td>1</td> <td>26</td> <td>6163</td> <td>3064</td> </tr> <tr> <td>2</td> <td>51</td> <td>1541</td> <td>766</td> </tr> <tr> <td>3</td> <td>77</td> <td>685</td> <td>340</td> </tr> </tbody> </table>	Höhe [m]	Kegel Ø [cm]	E(0°) [lx/klm]	E(C0) [lx/klm]	1	26	6163	3064	2	51	1541	766	3	77	685	340	Facets	without	81 %	10186793	10186794	10186795
	Höhe [m]	Kegel Ø [cm]	E(0°) [lx/klm]	E(C0) [lx/klm]																		
	1	26	6163	3064																		
2	51	1541	766																			
3	77	685	340																			
Facets	clear	77 %	10186784	10186785	10186786																	



Beam angle Medium Flood	Type of reflector	Cover / filter	LOR	Order number																		
				white	silver	black																
Fano Mini - MF <table border="1"> <thead> <tr> <th>Höhe [m]</th> <th>Kegel Ø [cm]</th> <th>E(0°) [lx/klm]</th> <th>E(C0) [lx/klm]</th> </tr> </thead> <tbody> <tr> <td>1</td> <td>45</td> <td>2898</td> <td>1348</td> </tr> <tr> <td>2</td> <td>90</td> <td>724</td> <td>337</td> </tr> <tr> <td>3</td> <td>135</td> <td>322</td> <td>150</td> </tr> </tbody> </table>	Höhe [m]	Kegel Ø [cm]	E(0°) [lx/klm]	E(C0) [lx/klm]	1	45	2898	1348	2	90	724	337	3	135	322	150	Facets	without	82 %	10186796	10186797	10186798
	Höhe [m]	Kegel Ø [cm]	E(0°) [lx/klm]	E(C0) [lx/klm]																		
	1	45	2898	1348																		
2	90	724	337																			
3	135	322	150																			
Facets	clear	78 %	10186787	10186788	10186789																	



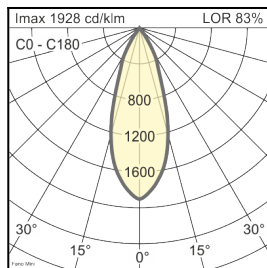
Technical details as well as weight specifications and measurements have been prepared with care. Errors excepted. All dimensions in mm · LED service life data: L80/B10 at ambient temperature (ta) 25°C. Rated lamp service life 50,000h. Luminous flux and efficiency specifications are subject to a tolerance of +/- 10%. Min CRI Ra: >80 / >90 · Product images are used as an example and may differ from the original · We reserve the right to make changes, insofar as they serve progress. Oktalite Lichttechnik GmbH · Mathias-Brüggen-Str. 73 · 50829 Cologne · T +49 221 59767-0 · F +49 221 59767-40 · mail@oktalite.com · www.oktalite.com · 2019-06-25

Optic FANO MINI - LED^{IQ}

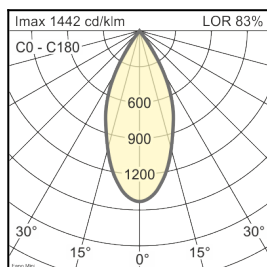
oktalite

Version	interchangeable reflector system
Mounting	Easy optic plate
Reflector colour	silber
Lighting technology	LED ^{IQ}

Beam angle Flood	Type of reflector	Cover / filter	LOR	Order number																						
				white	silver	black																				
<table border="1"> <thead> <tr> <th colspan="4">Fano Mini - FL</th> </tr> <tr> <th>Höhe [m]</th> <th>KegelØ [cm]</th> <th>E(0°) [lx/klm]</th> <th>E(C0) [lx/klm]</th> </tr> </thead> <tbody> <tr> <td>1</td> <td>67</td> <td>1928</td> <td>820</td> </tr> <tr> <td>2</td> <td>134</td> <td>482</td> <td>206</td> </tr> <tr> <td>3</td> <td>201</td> <td>214</td> <td>92</td> </tr> </tbody> </table>	Fano Mini - FL				Höhe [m]	KegelØ [cm]	E(0°) [lx/klm]	E(C0) [lx/klm]	1	67	1928	820	2	134	482	206	3	201	214	92	Facets	without	83 %	10186799	10186800	10186801
	Fano Mini - FL																									
	Höhe [m]	KegelØ [cm]	E(0°) [lx/klm]	E(C0) [lx/klm]																						
1	67	1928	820																							
2	134	482	206																							
3	201	214	92																							
Facets	clear	79 %	10186790	10186791	10186792																					



Beam angle Wide Flood	Type of reflector	Cover / filter	LOR	Order number																						
				white	silver	black																				
<table border="1"> <thead> <tr> <th colspan="4">Fano Mini - WFL</th> </tr> <tr> <th>Höhe [m]</th> <th>KegelØ [cm]</th> <th>E(0°) [lx/klm]</th> <th>E(C0) [lx/klm]</th> </tr> </thead> <tbody> <tr> <td>1</td> <td>86</td> <td>1442</td> <td>564</td> </tr> <tr> <td>2</td> <td>172</td> <td>361</td> <td>141</td> </tr> <tr> <td>3</td> <td>258</td> <td>160</td> <td>63</td> </tr> </tbody> </table>	Fano Mini - WFL				Höhe [m]	KegelØ [cm]	E(0°) [lx/klm]	E(C0) [lx/klm]	1	86	1442	564	2	172	361	141	3	258	160	63	Facets	without	83 %	10186802	10186803	10186804
	Fano Mini - WFL																									
	Höhe [m]	KegelØ [cm]	E(0°) [lx/klm]	E(C0) [lx/klm]																						
1	86	1442	564																							
2	172	361	141																							
3	258	160	63																							
Facets	clear	79 %	10186808	10186809	10186810																					



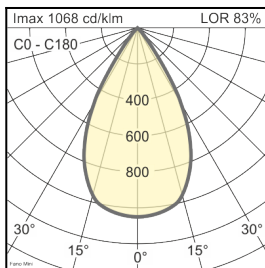
Technical details as well as weight specifications and measurements have been prepared with care. Errors excepted. All dimensions in mm · LED service life data: L80/B10 at ambient temperature (ta) 25°C. Rated lamp service life 50,000h. Luminous flux and efficiency specifications are subject to a tolerance of +/- 10%. Min CRI Ra: >80 / >90 · Product images are used as an example and may differ from the original · We reserve the right to make changes, insofar as they serve progress. Oktalite Lichttechnik GmbH · Mathias-Brüggen-Str. 73 · 50829 Cologne · T +49 221 59767-0 · F +49 221 59767-40 · mail@oktalite.com · www.oktalite.com · 2019-06-25

Optic FANO MINI - LED^{IQ}

oktalite

Version	interchangeable reflector system
Mounting	Easy optic plate
Reflector colour	silber
Lighting technology	LED ^{IQ}

Beam angle Very Wide Flood	Type of reflector	Cover / filter	LOR	Order number																											
				white	silver	black																									
<table border="1"> <thead> <tr> <th colspan="5">Fano Mini - VFL</th> </tr> <tr> <th>Höhe [m]</th> <th>Kegel Ø [cm]</th> <th>E(0°) [lx/kim]</th> <th colspan="2">E(C0) [lx/kim]</th> </tr> </thead> <tbody> <tr> <td>1</td> <td>110</td> <td>1068</td> <td colspan="2">363</td> </tr> <tr> <td>2</td> <td>221</td> <td>267</td> <td colspan="2">91</td> </tr> <tr> <td>3</td> <td>331</td> <td>119</td> <td colspan="2">40</td> </tr> </tbody> </table>	Fano Mini - VFL					Höhe [m]	Kegel Ø [cm]	E(0°) [lx/kim]	E(C0) [lx/kim]		1	110	1068	363		2	221	267	91		3	331	119	40		Facets	without	83 %	10186805	10186806	10186807
	Fano Mini - VFL																														
	Höhe [m]	Kegel Ø [cm]	E(0°) [lx/kim]	E(C0) [lx/kim]																											
1	110	1068	363																												
2	221	267	91																												
3	331	119	40																												
Facets	clear	79 %	10186811	10186812	10186813																										



Technical details as well as weight specifications and measurements have been prepared with care. Errors excepted. All dimensions in mm · LED service life data: L80/B10 at ambient temperature (ta) 25°C. Rated lamp service life 50,000h. Luminous flux and efficiency specifications are subject to a tolerance of +/- 10%. Min CRI Ra: >80 / >90 · Product images are used as an example and may differ from the original · We reserve the right to make changes, insofar as they serve progress. Oktalite Lichttechnik GmbH · Mathias-Brüggen-Str. 73 · 50829 Cologne · T +49 221 59767-0 · F +49 221 59767-40 · mail@oktalite.com · www.oktalite.com · 2019-06-25