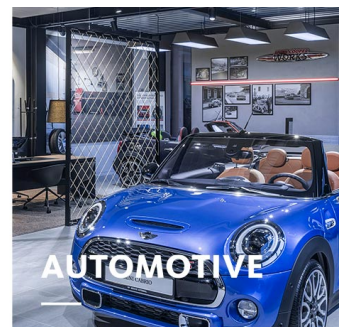
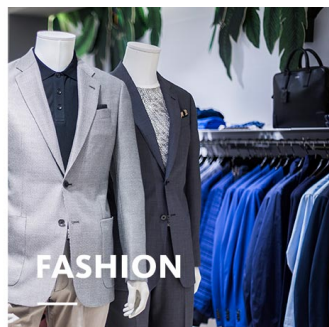
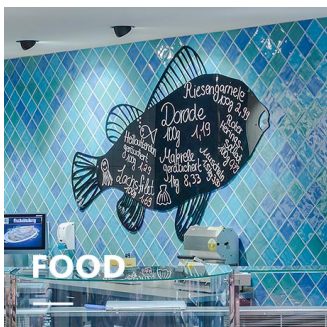




FANO MINI

TRACK MOUNTED LUMINAIRES

FANO MINI's distinguishing feature is its cubic, linear design. The perfect supplement to the successful product family in miniature format with almost closed housing. Flexible in use and particularly suitable for low ceiling heights.

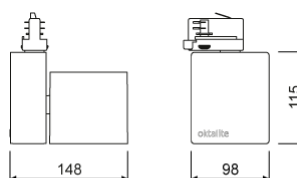




FANO MINI

oktalite

www.oktalite.com/fano-mini-t

Type of luminaire	Track mounted luminaires
Application areas	Accent lighting
Pan/tilt range	355° turning range, 180° swivel range
Mounting	3-circuit power track adapter, not suitable for vertical mounting
Lighting technology	LED
Lumen category	1500 lm - 4000 lm
Light colour White	2700 K, 3000 K, 3000 K - Efficient White, 3000 K - Brilliant Colour, 3500 K, 4000 K
Light colour Food*	B+V+C, M, M+F
Cooling	passive
Supply unit	Driver integrated
Luminaire colour	RAL 9005 jet black RAL 9006 white aluminium RAL 9016 traffic white Special colours on request
Surface	structure powder-coated
Nominal voltage	220 - 240 V, 50/60Hz
Lighting controls	on request
Weight	Approx. 1.9 kg



Components	 Luminaire housing  Optic
------------	--

Test seal	    
-----------	---

* B = Bakery, V = Vegetable, C = Cheese,
M = Meat,
M = Meat, F = Fish

Technical details as well as weight specifications and measurements have been prepared with care. Errors excepted. All dimensions in mm · LED service life data: L80/B10 at ambient temperature (ta) 25°C. Rated lamp service life 50,000h. Luminous flux and efficiency specifications are subject to a tolerance of +/- 10%. Min CRI Ra: >80 / >90 · Product images are used as an example and may differ from the original · We reserve the right to make changes, insofar as they serve progress. Oktalite Lichttechnik GmbH · Mathias-Brüggen-Str. 73 · 50829 Cologne · T +49 221 59767-0 · F +49 221 59767-40 · mail@oktalite.com · www.oktalite.com · 2019-06-25

**FANO MINI****oktalite**

Lumen category	Light colour	CRI R _a	system luminous flux*	System performance	Order number		
					white	silver	black
2000 lm	3000 K - Efficient White	94	1875 lm	17 W	10188062	10188063	10188064
2000 lm	3000 K - Brilliant Colour	96	1715 lm	21 W	10188065	10188066	10188067
3000 lm	2700 K	81	2675 lm	23 W	10188068	10188069	10188070
3000 lm	3000 K	83	2790 lm	23 W	10188071	10188072	10188073
3000 lm	3000 K - Efficient White	94	2725 lm	27 W	10188074	10188075	10188076
3000 lm	3000 K - Brilliant Colour	96	2615 lm	35 W	10188083	10188084	10188085
3000 lm	3500 K	85	2845 lm	23 W	10188077	10188078	10188079
3000 lm	4000 K	83	2900 lm	23 W	10188080	10188081	10188082
4000 lm	2700 K	81	3395 lm	31 W	10188086	10188087	10188088
4000 lm	3000 K	83	3535 lm	31 W	10188089	10188090	10188091
4000 lm	3000 K - Efficient White	94	3475 lm	37 W	10188092	10188093	10188094
4000 lm	3500 K	85	3605 lm	31 W	10188095	10188096	10188097
4000 lm	4000 K	83	3675 lm	31 W	10188098	10188099	10188100
1500 lm	M	-	1355 lm	23 W	10188041	10188042	10188043
1500 lm	M+F	-	1275 lm	23 W	10188047	10188048	10188049
2000 lm	B+V+C	-	1755 lm	19 W	10188053	10188054	10188055
2000 lm	M	-	1715 lm	31 W	10188044	10188045	10188046
2000 lm	M+F	-	1620 lm	31 W	10188050	10188051	10188052
3000 lm	B+V+C	-	2595 lm	31 W	10188056	10188057	10188058
4000 lm	B+V+C	-	3195 lm	41 W	10188059	10188060	10188061

* System luminous flux based on medium flood reflector in silver.

Efficient White: R₉ = 75, R_r = 91, R_g = 102

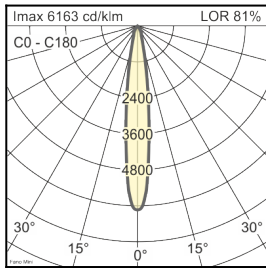
Brilliant Colour: R₉ = 92, R_r = 93, R_g = 106

Technical details as well as weight specifications and measurements have been prepared with care. Errors excepted. All dimensions in mm · LED service life data: L80/B10 at ambient temperature (ta) 25°C. Rated lamp service life 50,000h. Luminous flux and efficiency specifications are subject to a tolerance of +/- 10%. Min CRI Ra: >80 / >90 · Product images are used as an example and may differ from the original · We reserve the right to make changes, insofar as they serve progress. Oktalite Lichttechnik GmbH · Mathias-Brüggen-Str. 73 · 50829 Cologne · T +49 221 59767-0 · F +49 221 59767-40 · mail@oktalite.com · www.oktalite.com · 2019-06-25

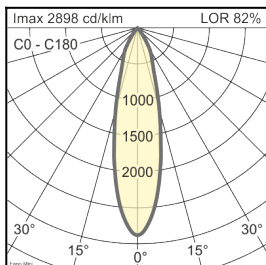
Optic FANO MINI - LED

Version	interchangeable reflector system
Mounting	Easy optic plate
Reflector colour	silber
Lighting technology	LED

Beam angle Spot	Type of reflector	Cover / filter	LOR	Order number																						
				white	silver	black																				
<table border="1"> <thead> <tr> <th colspan="4">Fano Mini - SP</th> </tr> <tr> <th>Höhe [m]</th> <th>KegelØ [cm]</th> <th>E(0°) [lx/klm]</th> <th>E(C0) [lx/klm]</th> </tr> </thead> <tbody> <tr> <td>1</td> <td>26</td> <td>6163</td> <td>3064</td> </tr> <tr> <td>2</td> <td>51</td> <td>1541</td> <td>766</td> </tr> <tr> <td>3</td> <td>77</td> <td>685</td> <td>340</td> </tr> </tbody> </table>	Fano Mini - SP				Höhe [m]	KegelØ [cm]	E(0°) [lx/klm]	E(C0) [lx/klm]	1	26	6163	3064	2	51	1541	766	3	77	685	340	Facets	without	81 %	10186793	10186794	10186795
	Fano Mini - SP																									
	Höhe [m]	KegelØ [cm]	E(0°) [lx/klm]	E(C0) [lx/klm]																						
1	26	6163	3064																							
2	51	1541	766																							
3	77	685	340																							
Facets	clear	77 %	10186784	10186785	10186786																					



Beam angle Medium Flood	Type of reflector	Cover / filter	LOR	Order number																						
				white	silver	black																				
<table border="1"> <thead> <tr> <th colspan="4">Fano Mini - MF</th> </tr> <tr> <th>Höhe [m]</th> <th>KegelØ [cm]</th> <th>E(0°) [lx/klm]</th> <th>E(C0) [lx/klm]</th> </tr> </thead> <tbody> <tr> <td>1</td> <td>45</td> <td>2898</td> <td>1348</td> </tr> <tr> <td>2</td> <td>90</td> <td>724</td> <td>337</td> </tr> <tr> <td>3</td> <td>135</td> <td>322</td> <td>150</td> </tr> </tbody> </table>	Fano Mini - MF				Höhe [m]	KegelØ [cm]	E(0°) [lx/klm]	E(C0) [lx/klm]	1	45	2898	1348	2	90	724	337	3	135	322	150	Facets	without	82 %	10186796	10186797	10186798
	Fano Mini - MF																									
	Höhe [m]	KegelØ [cm]	E(0°) [lx/klm]	E(C0) [lx/klm]																						
1	45	2898	1348																							
2	90	724	337																							
3	135	322	150																							
Facets	clear	78 %	10186787	10186788	10186789																					

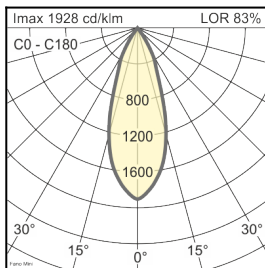


Technical details as well as weight specifications and measurements have been prepared with care. Errors excepted. All dimensions in mm · LED service life data: L80/B10 at ambient temperature (ta) 25°C. Rated lamp service life 50,000h. Luminous flux and efficiency specifications are subject to a tolerance of +/- 10%. Min CRI Ra: >80 / >90 · Product images are used as an example and may differ from the original · We reserve the right to make changes, insofar as they serve progress. Oktalite Lichttechnik GmbH · Mathias-Brüggen-Str. 73 · 50829 Cologne · T +49 221 59767-0 · F +49 221 59767-40 · mail@oktalite.com · www.oktalite.com · 2019-06-25

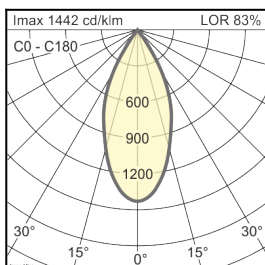
Optic FANO MINI - LED

Version	interchangeable reflector system
Mounting	Easy optic plate
Reflector colour	silber
Lighting technology	LED

Beam angle Flood	Type of reflector	Cover / filter	LOR	Order number																		
				white	silver	black																
Fano Mini - FL <table border="1"> <thead> <tr> <th>Höhe [m]</th> <th>KegelØ [cm]</th> <th>E(0°) [lx/klm]</th> <th>E(C0) [lx/klm]</th> </tr> </thead> <tbody> <tr> <td>1</td> <td>67</td> <td>1928</td> <td>820</td> </tr> <tr> <td>2</td> <td>134</td> <td>482</td> <td>206</td> </tr> <tr> <td>3</td> <td>201</td> <td>214</td> <td>92</td> </tr> </tbody> </table>	Höhe [m]	KegelØ [cm]	E(0°) [lx/klm]	E(C0) [lx/klm]	1	67	1928	820	2	134	482	206	3	201	214	92	Facets	without	83 %	10186799	10186800	10186801
	Höhe [m]	KegelØ [cm]	E(0°) [lx/klm]	E(C0) [lx/klm]																		
	1	67	1928	820																		
2	134	482	206																			
3	201	214	92																			
Facets	clear	79 %	10186790	10186791	10186792																	



Beam angle Wide Flood	Type of reflector	Cover / filter	LOR	Order number																		
				white	silver	black																
Fano Mini - WFL <table border="1"> <thead> <tr> <th>Höhe [m]</th> <th>KegelØ [cm]</th> <th>E(0°) [lx/klm]</th> <th>E(C0) [lx/klm]</th> </tr> </thead> <tbody> <tr> <td>1</td> <td>86</td> <td>1442</td> <td>564</td> </tr> <tr> <td>2</td> <td>172</td> <td>361</td> <td>141</td> </tr> <tr> <td>3</td> <td>258</td> <td>160</td> <td>63</td> </tr> </tbody> </table>	Höhe [m]	KegelØ [cm]	E(0°) [lx/klm]	E(C0) [lx/klm]	1	86	1442	564	2	172	361	141	3	258	160	63	Facets	without	83 %	10186802	10186803	10186804
	Höhe [m]	KegelØ [cm]	E(0°) [lx/klm]	E(C0) [lx/klm]																		
	1	86	1442	564																		
2	172	361	141																			
3	258	160	63																			
Facets	clear	79 %	10186808	10186809	10186810																	

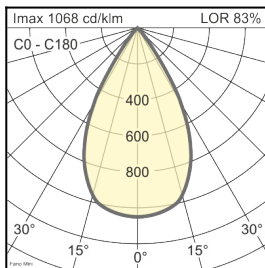


Technical details as well as weight specifications and measurements have been prepared with care. Errors excepted. All dimensions in mm · LED service life data: L80/B10 at ambient temperature (ta) 25°C. Rated lamp service life 50,000h. Luminous flux and efficiency specifications are subject to a tolerance of +/- 10%. Min CRI Ra: >80 / >90 · Product images are used as an example and may differ from the original · We reserve the right to make changes, insofar as they serve progress. Oktalite Lichttechnik GmbH · Mathias-Brüggen-Str. 73 · 50829 Cologne · T +49 221 59767-0 · F +49 221 59767-40 · mail@oktalite.com · www.oktalite.com · 2019-06-25

Optic FANO MINI - LED

Version	interchangeable reflector system
Mounting	Easy optic plate
Reflector colour	silber
Lighting technology	LED

Beam angle Very Wide Flood	Type of reflector	Cover / filter	LOR	Order number																						
				white	silver	black																				
<table border="1"> <thead> <tr> <th colspan="4">Fano Mini - VFL</th> </tr> <tr> <th>Höhe [m]</th> <th>KegelØ [cm]</th> <th>E(0°) [lx/klm]</th> <th>E(C0) [lx/klm]</th> </tr> </thead> <tbody> <tr> <td>1</td> <td>110</td> <td>1068</td> <td>363</td> </tr> <tr> <td>2</td> <td>221</td> <td>267</td> <td>91</td> </tr> <tr> <td>3</td> <td>331</td> <td>119</td> <td>40</td> </tr> </tbody> </table>	Fano Mini - VFL				Höhe [m]	KegelØ [cm]	E(0°) [lx/klm]	E(C0) [lx/klm]	1	110	1068	363	2	221	267	91	3	331	119	40	Facets	without	83 %	10186805	10186806	10186807
	Fano Mini - VFL																									
	Höhe [m]	KegelØ [cm]	E(0°) [lx/klm]	E(C0) [lx/klm]																						
1	110	1068	363																							
2	221	267	91																							
3	331	119	40																							
Facets	clear	79 %	10186811	10186812	10186813																					



Technical details as well as weight specifications and measurements have been prepared with care. Errors excepted. All dimensions in mm · LED service life data: L80/B10 at ambient temperature (ta) 25°C. Rated lamp service life 50,000h. Luminous flux and efficiency specifications are subject to a tolerance of +/- 10%. Min CRI Ra: >80 / >90 · Product images are used as an example and may differ from the original · We reserve the right to make changes, insofar as they serve progress. Oktalite Lichttechnik GmbH · Mathias-Brüggen-Str. 73 · 50829 Cologne · T +49 221 59767-0 · F +49 221 59767-40 · mail@oktalite.com · www.oktalite.com · 2019-06-25