



QUIRA

RECESSED LUMINAIRE

QUIRA - the recessed spotlight with impressive features: powerful and extremely flexible, yet small and handy. QUIRA can be swivelled to accentuate merchandise while remaining flush with the ceiling. And when extended, QUIRA precisely illuminates all high-level decoration. Optionally fitted with the ACTIVE LED module. This makes the precise adjustment of the light possible as regards intensity and colour temperature.



Calm ceiling appearance

QUIRA tilted in can be used as a downlight



Almost invisible

Can be tilted in through up to 15°



High level incidence of light

Can be tilted out through up to 70°: ideal for the goods wall



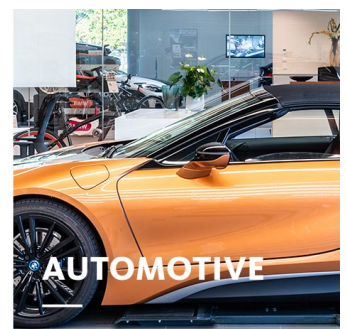
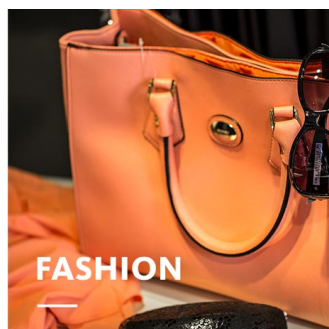
Five beam angles

Optimum light distribution by means of efficient faceted reflectors E65SP, MF, FL, WFL und VWF



Intelligent light

Smart lighting management optionally with control line or wireless

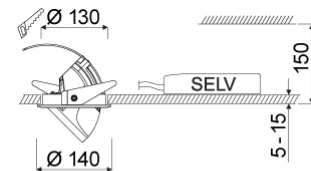




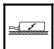
QUIRA

oktalite

www.oktalite.com/quira-r

Type of luminaire	recessed luminaire
Application areas	Accent lighting, High-level decoration
Pan/tilt range	Rotates through 355°, swivels through 85° (15° inwards, 70° outwards)
Mounting	spring mounting
Ceiling thickness	5 - 15 mm
Lighting technology	LED ^{IQ} DALI
LED Luminous Flux Class	2000 lm - 4000 lm
Light colour White	2700 K, 3000 K, 3000 K - Efficient White, 3000 K - Brilliant Colour, 3500 K, 4000 K, Active 2700-6000 K
Light colour Food*	M, M+F, BF
Cooling	passive
Supply unit	DALI driver separate
Luminaire colour	RAL 9005 jet black RAL 9006 white aluminium RAL 9016 traffic white Special colours on request
Surface	structure powder-coated
Nominal voltage	220 - 240 V, 50/60Hz
Lighting controls	DALI DT6, DALI DT8 (Active)
Installation	Recommended for new installation.
Weight	Approx. 0.8 kg



- Components
-  Luminaire housing
 -  Optic
 -  Supply unit



* M = Meat,
M = Meat, F = Fish,
BF = Brilliant Food

Technical details as well as weight specifications and measurements have been prepared with care. Errors excepted. All dimensions in mm · LED service life data: L80/B10 at ambient temperature (ta) 25°C. Rated lamp service life 50,000h. Luminous flux and efficiency specifications are subject to a tolerance of +/- 10%. Min CRI Ra: >80 / >90 · Product images are used as an example and may differ from the original · We reserve the right to make changes, insofar as they serve progress. Oktalite Lichttechnik GmbH · Mathias-Brüggen-Str. 73 · 50829 Cologne · T +49 221 59767-0 · F +49 221 59767-40 · mail@oktalite.com · www.oktalite.com · 2020-09-28

**QUIRA****oktalite**

LED Luminous Flux Class	Light colour	CRI R _a	system luminous flux*	System performance	Order number		
					white	silver	black
3000 lm	3000 K - Brilliant Colour	97	2880 lm	35 W	10187715	10187716	10187717
4000 lm	2700 K	81	3685 lm	31 W	10187700	10187701	10187702
	3000 K	83	3845 lm	31 W	10187703	10187704	10187705
	3000 K - Efficient White	94	3790 lm	37 W	10187706	10187707	10187708
	3500 K	85	3915 lm	31 W	10187709	10187710	10187711
	4000 K	83	3995 lm	31 W	10187712	10187713	10187714
2000 lm	M	-	1865 lm	31 W	10187691	10187692	10187693
	M+F	-	1760 lm	31 W	10187694	10187695	10187696
3000 lm	BF	-	2720 lm	31 W	10213480	10213481	10213482
2500 lm	Active 2700-6000 K	-	-	37 W	10211095	10211096	10211098
	2700 K	83	2140 lm				
	6000 K	87	2480 lm				

* System luminous flux based on medium flood reflector.



Efficient White: R₉ = 75, R_f = 91, R_g = 102



Brilliant Colour: R₉ = 94, R_f = 95, R_g = 104

Technical details as well as weight specifications and measurements have been prepared with care. Errors excepted. All dimensions in mm · LED service life data: L80/B10 at ambient temperature (ta) 25°C. Rated lamp service life 50,000h. Luminous flux and efficiency specifications are subject to a tolerance of +/- 10%. Min CRI Ra: >80 / >90 · Product images are used as an example and may differ from the original · We reserve the right to make changes, insofar as they serve progress. Oktalite Lichttechnik GmbH · Mathias-Brüggen-Str. 73 · 50829 Cologne · T +49 221 59767-0 · F +49 221 59767-40 · mail@oktalite.com · www.oktalite.com · 2020-09-28



Optic QUIRA - LED ^{IQ} DALI

oktalite

Optic 3D faceted reflectors
Type interchangeable reflector system

Beam angle				Cover	LOR	Order number																		
Spot						white	silver	black																
Quira - SP <table border="1"> <thead> <tr> <th>Höhe [m]</th> <th>KegelØ [cm]</th> <th>E(0°) [lx/klm]</th> <th>E(C0) [lx/klm]</th> </tr> </thead> <tbody> <tr> <td>1</td> <td>26</td> <td>5964</td> <td>2956</td> </tr> <tr> <td>2</td> <td>52</td> <td>1491</td> <td>739</td> </tr> <tr> <td>3</td> <td>78</td> <td>663</td> <td>328</td> </tr> </tbody> </table>				Höhe [m]	KegelØ [cm]	E(0°) [lx/klm]	E(C0) [lx/klm]	1	26	5964	2956	2	52	1491	739	3	78	663	328					
Höhe [m]	KegelØ [cm]	E(0°) [lx/klm]	E(C0) [lx/klm]																					
1	26	5964	2956																					
2	52	1491	739																					
3	78	663	328																					
				without	89 %	10186739	10186740	10186741																
				clear	85 %	10186748	10186749	10186750																
Beam angle				Cover	LOR	Order number																		
Medium Flood						white	silver	black																
Quira - MF <table border="1"> <thead> <tr> <th>Höhe [m]</th> <th>KegelØ [cm]</th> <th>E(0°) [lx/klm]</th> <th>E(C0) [lx/klm]</th> </tr> </thead> <tbody> <tr> <td>1</td> <td>46</td> <td>2841</td> <td>1319</td> </tr> <tr> <td>2</td> <td>92</td> <td>710</td> <td>330</td> </tr> <tr> <td>3</td> <td>139</td> <td>316</td> <td>147</td> </tr> </tbody> </table>				Höhe [m]	KegelØ [cm]	E(0°) [lx/klm]	E(C0) [lx/klm]	1	46	2841	1319	2	92	710	330	3	139	316	147					
Höhe [m]	KegelØ [cm]	E(0°) [lx/klm]	E(C0) [lx/klm]																					
1	46	2841	1319																					
2	92	710	330																					
3	139	316	147																					
				without	90 %	10186742	10186743	10186744																
				clear	86 %	10186751	10186752	10186753																
Beam angle				Cover	LOR	Order number																		
Flood						white	silver	black																
Quira - FL <table border="1"> <thead> <tr> <th>Höhe [m]</th> <th>KegelØ [cm]</th> <th>E(0°) [lx/klm]</th> <th>E(C0) [lx/klm]</th> </tr> </thead> <tbody> <tr> <td>1</td> <td>67</td> <td>1962</td> <td>845</td> </tr> <tr> <td>2</td> <td>133</td> <td>490</td> <td>211</td> </tr> <tr> <td>3</td> <td>200</td> <td>218</td> <td>94</td> </tr> </tbody> </table>				Höhe [m]	KegelØ [cm]	E(0°) [lx/klm]	E(C0) [lx/klm]	1	67	1962	845	2	133	490	211	3	200	218	94					
Höhe [m]	KegelØ [cm]	E(0°) [lx/klm]	E(C0) [lx/klm]																					
1	67	1962	845																					
2	133	490	211																					
3	200	218	94																					
				without	89 %	10186745	10186746	10186747																
				clear	85 %	10186754	10186755	10186756																

Technical details as well as weight specifications and measurements have been prepared with care. Errors excepted. All dimensions in mm · LED service life data: L80/B10 at ambient temperature (ta) 25°C. Rated lamp service life 50,000h. Luminous flux and efficiency specifications are subject to a tolerance of +/- 10%. Min CRI Ra: >80 / >90 · Product images are used as an example and may differ from the original · We reserve the right to make changes, insofar as they serve progress. Oktalite Lichttechnik GmbH · Mathias-Brüggen-Str. 73 · 50829 Cologne · T +49 221 59767-0 · F +49 221 59767-40 · mail@oktalite.com · www.oktalite.com · 2020-09-28



Optic QUIRA - LED ^{IQ} DALI

oktalite

Optic 3D faceted reflectors
Type interchangeable reflector system

Beam angle				Cover	LOR	Order number																						
Wide Flood						white	silver	black																				
<table border="1"> <thead> <tr> <th colspan="4">Quira - WFL</th> </tr> <tr> <th>Höhe [m]</th> <th>KegelØ [cm]</th> <th>E(0°) [lx/klm]</th> <th>E(C0) [lx/klm]</th> </tr> </thead> <tbody> <tr> <td>1</td> <td>85</td> <td>1514</td> <td>592</td> </tr> <tr> <td>2</td> <td>170</td> <td>379</td> <td>148</td> </tr> <tr> <td>3</td> <td>255</td> <td>168</td> <td>66</td> </tr> </tbody> </table>				Quira - WFL				Höhe [m]	KegelØ [cm]	E(0°) [lx/klm]	E(C0) [lx/klm]	1	85	1514	592	2	170	379	148	3	255	168	66					
Quira - WFL																												
Höhe [m]	KegelØ [cm]	E(0°) [lx/klm]	E(C0) [lx/klm]																									
1	85	1514	592																									
2	170	379	148																									
3	255	168	66																									
				without	89 %	10186757	10186758	10186759																				
				clear	85 %	10186763	10186764	10186765																				

Beam angle				Cover	LOR	Order number																						
Very Wide Flood						white	silver	black																				
<table border="1"> <thead> <tr> <th colspan="4">Quira - VFL</th> </tr> <tr> <th>Höhe [m]</th> <th>KegelØ [cm]</th> <th>E(0°) [lx/klm]</th> <th>E(C0) [lx/klm]</th> </tr> </thead> <tbody> <tr> <td>1</td> <td>116</td> <td>1058</td> <td>344</td> </tr> <tr> <td>2</td> <td>232</td> <td>265</td> <td>86</td> </tr> <tr> <td>3</td> <td>348</td> <td>118</td> <td>38</td> </tr> </tbody> </table>				Quira - VFL				Höhe [m]	KegelØ [cm]	E(0°) [lx/klm]	E(C0) [lx/klm]	1	116	1058	344	2	232	265	86	3	348	118	38					
Quira - VFL																												
Höhe [m]	KegelØ [cm]	E(0°) [lx/klm]	E(C0) [lx/klm]																									
1	116	1058	344																									
2	232	265	86																									
3	348	118	38																									
				without	88 %	10186760	10186761	10186762																				
				clear	84 %	10186766	10186767	10186768																				

Technical details as well as weight specifications and measurements have been prepared with care. Errors excepted. All dimensions in mm · LED service life data: L80/B10 at ambient temperature (ta) 25°C. Rated lamp service life 50,000h. Luminous flux and efficiency specifications are subject to a tolerance of +/- 10%. Min CRI Ra: >80 / >90 · Product images are used as an example and may differ from the original · We reserve the right to make changes, insofar as they serve progress. Oktalite Lichttechnik GmbH · Mathias-Brüggen-Str. 73 · 50829 Cologne · T +49 221 59767-0 · F +49 221 59767-40 · mail@oktalite.com · www.oktalite.com · 2020-09-28



Supply unit - LED^{IQ} DALI

DALI driver

oktalite

Connection type	Pre-wired plug-in connectivity
Mains connection	GST 18i3
Cable length secondary	400 mm
Nominal voltage	220 - 240 V, 50/60Hz
protection	IP20
protection class	I, II
Lighting controls	DALI DT6, DALI DT8 (Active)
Lighting technology	LED ^{IQ} DALI

Lighting technology	Luminaire connection	Output	System performance	Order number
LED IQ DALI	RNV	800 mA	31 W	10185636
LED IQ DALI	RNV	900 mA	35 W	10185638
LED IQ DALI	RNV	950 mA	37 W	10185640
LED IQ DALI	R4L (Active)	900 mA	37 W	10211596

Technical details as well as weight specifications and measurements have been prepared with care. Errors excepted. All dimensions in mm · LED service life data: L80/B10 at ambient temperature (ta) 25°C. Rated lamp service life 50,000h. Luminous flux and efficiency specifications are subject to a tolerance of +/- 10%. Min CRI Ra: >80 / >90 · Product images are used as an example and may differ from the original · We reserve the right to make changes, insofar as they serve progress. Oktalite Lichttechnik GmbH · Mathias-Brüggen-Str. 73 · 50829 Cologne · T +49 221 59767-0 · F +49 221 59767-40 · mail@oktalite.com · www.oktalite.com · 2020-09-28