



B.LEE MINI

TRACK MOUNTED LUMINAIRES

B.LEE MINI makes perfect use of its inconspicuous size: the small LED spotlight has an unobtrusive appearance and at the same time a high performance. Exposed cooling ribs optimise the passive cooling management and makes for an unmistakable look.



Handy size

25 % smaller than B.LEE and nevertheless with a high light output



No brightening of the ceiling

Light-tight housing with external cooling fins



Illumination of individual products

Replacement without tools of five interchangeable reflectors SP, MF, FL, WFL and VWFL



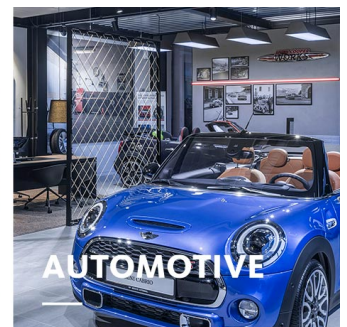
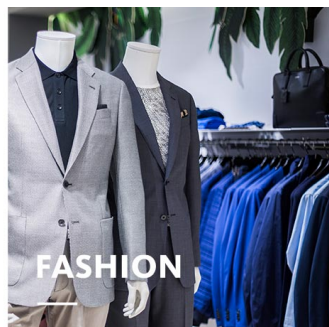
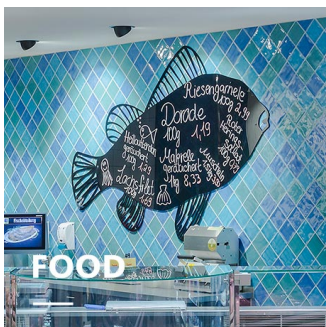
Large selection of LEDs

Sechs Weißlichtfarben und drei Speziallichtfarben für den Frischebereich stehen zur Auswahl



Intelligent lighting

LED^{IQ} for your smart lighting management



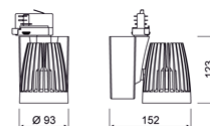
B.LEE MINI

oktalite

www.oktalite.com/blee-mini-t

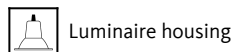
Type of luminaire	Track mounted luminaires
Application areas	Accent lighting
Pan/tilt range	355° turning range, 180° swivel range
Mounting	3-circuit power track adapter, not suitable for vertical mounting
Lighting technology	LED ^{IQ}
Lumen category	2000 lm - 4000 lm
Light colour White	2700 K, 3000 K, 3100 K Best Colour, 3100 K Efficient Colour, 3500 K, 4000 K
Light colour Food*	B+V+C, M, M+F
Cooling	passive
Supply unit	DALI driver integrated
Luminaire colour	RAL 9005 jet black RAL 9006 white aluminium RAL 9016 traffic white Special colours on request

LED^{IQ}



Surface	structure powder-coated
Nominal voltage	220 - 240 V, 50/60Hz
Lighting controls	DALI
Weight	Approx. 1.2 kg

Components



Test seal



* B = Bakery, V = Vegetable, C = Cheese,
M = Meat,
M = Meat, F = Fish

Technical details as well as weight specifications and measurements have been prepared with care. Errors excepted. All dimensions in mm · LED service life data: L80/B10 at ambient temperature (ta) 25°C. Rated lamp service life 50,000h. Luminous flux and efficiency specifications are subject to a tolerance of +/- 10%. Min CRI Ra: >80 / >90 · Product images are used as an example and may differ from the original · We reserve the right to make changes, insofar as they serve progress. Oktalite Lichttechnik GmbH · Mathias-Brüggen-Str. 73 · 50829 Cologne · T +49 221 59767-0 · F +49 221 59767-40 · mail@oktalite.com · www.oktalite.com · 2019-06-25



Luminaire housing - LED^{IQ}

B.LEE MINI

oktalite

Lumen category	Light colour	CRI R _a	system luminous flux*	System performance	Order number		
					white	silver	black
3000 lm	3100 K Best Colour	95	2985 lm	32 W	10161965	10161966	10161967
4000 lm	2700 K	82	3500 lm	32 W	10161971	10161972	10161973
4000 lm	3000 K	85	3765 lm	32 W	10161977	10161978	10161979
4000 lm	3100 K Efficient Colour	85	3665 lm	32 W	10161983	10161984	10161985
4000 lm	3500 K	85	3815 lm	32 W	10161989	10161990	10161991
4000 lm	4000 K	85	3895 lm	32 W	10161995	10161996	10161997
2000 lm	M	-	1960 lm	31 W	10161162	10161163	10161164
2000 lm	M+F	-	1850 lm	31 W	10161171	10161172	10161173
3000 lm	B+V+C	-	2960 lm	31 W	10161180	10161181	10161182

* System luminous flux based on medium flood reflector in silver.

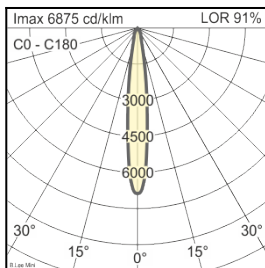
Technical details as well as weight specifications and measurements have been prepared with care. Errors excepted. All dimensions in mm · LED service life data: L80/B10 at ambient temperature (ta) 25°C. Rated lamp service life 50,000h. Luminous flux and efficiency specifications are subject to a tolerance of +/- 10%. Min CRI Ra: >80 / >90 · Product images are used as an example and may differ from the original · We reserve the right to make changes, insofar as they serve progress. Oktalite Lichttechnik GmbH · Mathias-Brüggen-Str. 73 · 50829 Cologne · T +49 221 59767-0 · F +49 221 59767-40 · mail@oktalite.com · www.oktalite.com · 2019-06-25

Optic B.LEE MINI - LED^{IQ}

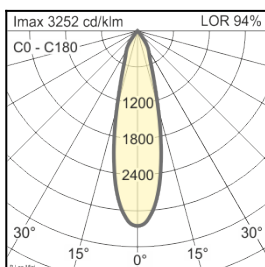
oktalite

Version	interchangeable reflector system
Mounting	snap ring
Reflector colour	silver
Lighting technology	LED ^{IQ}

Beam angle Spot	Type of reflector	Cover / filter	LOR	Order number																						
				white	silver	black																				
<table border="1"> <thead> <tr> <th colspan="4">B.Lee Mini - SP</th> </tr> <tr> <th>Höhe [m]</th> <th>Kegel Ø [cm]</th> <th>E(0°) [lx/klm]</th> <th>E(C0) [lx/klm]</th> </tr> </thead> <tbody> <tr> <td>1</td> <td>25</td> <td>6875</td> <td>3397</td> </tr> <tr> <td>2</td> <td>49</td> <td>1719</td> <td>849</td> </tr> <tr> <td>3</td> <td>74</td> <td>764</td> <td>377</td> </tr> </tbody> </table>	B.Lee Mini - SP				Höhe [m]	Kegel Ø [cm]	E(0°) [lx/klm]	E(C0) [lx/klm]	1	25	6875	3397	2	49	1719	849	3	74	764	377	Segmented, MIRO-SILVER®	without	91 %	-	10116161	-
B.Lee Mini - SP																										
Höhe [m]	Kegel Ø [cm]	E(0°) [lx/klm]	E(C0) [lx/klm]																							
1	25	6875	3397																							
2	49	1719	849																							
3	74	764	377																							



Beam angle Medium Flood	Type of reflector	Cover / filter	LOR	Order number																						
				white	silver	black																				
<table border="1"> <thead> <tr> <th colspan="4">B.Lee Mini - MF</th> </tr> <tr> <th>Höhe [m]</th> <th>Kegel Ø [cm]</th> <th>E(0°) [lx/klm]</th> <th>E(C0) [lx/klm]</th> </tr> </thead> <tbody> <tr> <td>1</td> <td>44</td> <td>3252</td> <td>1520</td> </tr> <tr> <td>2</td> <td>89</td> <td>813</td> <td>380</td> </tr> <tr> <td>3</td> <td>133</td> <td>361</td> <td>169</td> </tr> </tbody> </table>	B.Lee Mini - MF				Höhe [m]	Kegel Ø [cm]	E(0°) [lx/klm]	E(C0) [lx/klm]	1	44	3252	1520	2	89	813	380	3	133	361	169	Segmented, MIRO-SILVER®	without	94 %	-	10116162	-
B.Lee Mini - MF																										
Höhe [m]	Kegel Ø [cm]	E(0°) [lx/klm]	E(C0) [lx/klm]																							
1	44	3252	1520																							
2	89	813	380																							
3	133	361	169																							

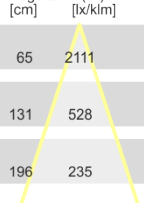


Technical details as well as weight specifications and measurements have been prepared with care. Errors excepted. All dimensions in mm · LED service life data: L80/B10 at ambient temperature (ta) 25°C. Rated lamp service life 50,000h. Luminous flux and efficiency specifications are subject to a tolerance of +/- 10%. Min CRI Ra: >80 / >90 · Product images are used as an example and may differ from the original · We reserve the right to make changes, insofar as they serve progress. Oktalite Lichttechnik GmbH · Mathias-Brüggen-Str. 73 · 50829 Cologne · T +49 221 59767-0 · F +49 221 59767-40 · mail@oktalite.com · www.oktalite.com · 2019-06-25

Version	interchangeable reflector system
Mounting	snap ring
Reflector colour	silver
Lighting technology	LED ^{IQ}

Beam angle Flood	Type of reflector	Cover / filter	LOR	Order number		
				white	silver	black

B.Lee Mini - FL			
Höhe [m]	KegelØ [cm]	E(0°) [lx/klm]	E(C0) [lx/klm]
1	65	2111	907
2	131	528	227
3	196	235	101



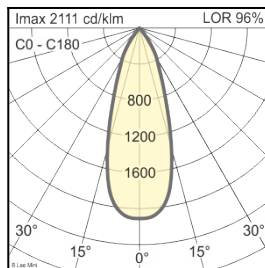
Segmented, MIRO-SILVER®

without

96 %

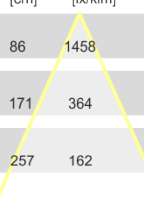
-

10116163 -



Beam angle Wide Flood	Type of reflector	Cover / filter	LOR	Order number		
				white	silver	black

B.Lee Mini - WFL			
Höhe [m]	KegelØ [cm]	E(0°) [lx/klm]	E(C0) [lx/klm]
1	86	1458	574
2	171	364	143
3	257	162	64



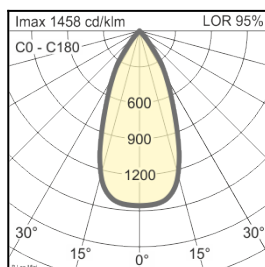
Segmented, MIRO-SILVER®

without

95 %

-

10147509 -



Technical details as well as weight specifications and measurements have been prepared with care. Errors excepted. All dimensions in mm · LED service life data: L80/B10 at ambient temperature (ta) 25°C. Rated lamp service life 50,000h. Luminous flux and efficiency specifications are subject to a tolerance of +/- 10%. Min CRI Ra: >80 / >90 · Product images are used as an example and may differ from the original · We reserve the right to make changes, insofar as they serve progress. Oktalite Lichttechnik GmbH · Mathias-Brüggen-Str. 73 · 50829 Cologne · T +49 221 59767-0 · F +49 221 59767-40 · mail@oktalite.com · www.oktalite.com · 2019-06-25

Optic B.LEE MINI - LED^{IQ}

oktalite

Version	interchangeable reflector system
Mounting	snap ring
Reflector colour	silver
Lighting technology	LED ^{IQ}

Beam angle	Type of reflector	Cover / filter	LOR	Order number		
				white	silver	black

B.Lee Mini - VFL			
Höhe [m]	KegelØ [cm]	E(0°) [lx/klm]	E(C0) [lx/klm]
1	113	1044	366
2	225	261	91
3	338	116	41

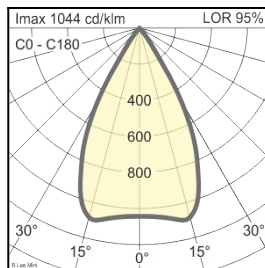
Segmented, MIRO-SILVER®

without

95 %

-

10147510 -



Technical details as well as weight specifications and measurements have been prepared with care. Errors excepted. All dimensions in mm · LED service life data: L80/B10 at ambient temperature (ta) 25°C. Rated lamp service life 50,000h. Luminous flux and efficiency specifications are subject to a tolerance of +/- 10%. Min CRI Ra: >80 / >90 · Product images are used as an example and may differ from the original · We reserve the right to make changes, insofar as they serve progress. Oktalite Lichttechnik GmbH · Mathias-Brüggen-Str. 73 · 50829 Cologne · T +49 221 59767-0 · F +49 221 59767-40 · mail@oktalite.com · www.oktalite.com · 2019-06-25