



B.LEE MINI

TRACK MOUNTED LUMINAIRES

B.LEE MINI makes perfect use of its inconspicuous size: the small LED spotlight has an unobtrusive appearance and at the same time a high performance. Exposed cooling ribs optimise the passive cooling management and makes for an unmistakable look.



Handy size

25 % smaller than B.LEE and nevertheless with a high light output



No brightening of the ceiling

Light-tight housing with external cooling fins



Illumination of individual products

Replacement without tools of five interchangeable reflectors SP, MF, FL, WFL and VWFL



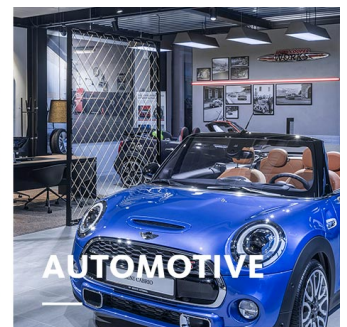
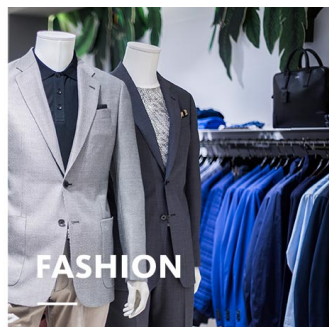
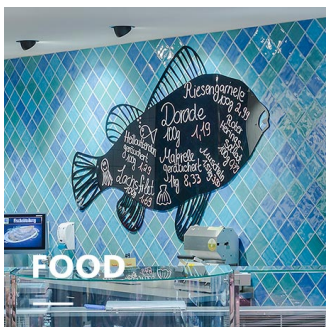
Large selection of LEDs

Sechs Weißlichtfarben und drei Speziallichtfarben für den Frischebereich stehen zur Auswahl



Intelligent lighting

LED^{IQ} for your smart lighting management

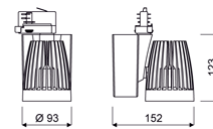


B.LEE MINI

oktalite



www.oktalite.com/blee-mini-t

| | |
|---------------------|---|
| Type of luminaire | Track mounted luminaires |
| Application areas | Accent lighting |
| Pan/tilt range | 355° turning range, 180° swivel range |
| Mounting | 3-circuit power track adapter, not suitable for vertical mounting |
| Lighting technology | LED |
| Lumen category | 1500 lm - 4000 lm |
| Light colour White | 2700 K, 3000 K, 3100 K Best Colour, 3100 K Efficient Colour, 3500 K, 4000 K |
| Light colour Food* | B+V+C, M, M+F |
| Cooling | passive |
| Supply unit | Driver integrated |
| Luminaire colour | RAL 9005 jet black |



| | |
|-----------------|----------------------------|
| | RAL 9006 white aluminium |
| | RAL 9016 traffic white |
| | Special colours on request |
| Surface | structure powder-coated |
| Nominal voltage | 220 - 240 V, 50/60Hz |
| Weight | Approx. 1.2 kg |

Components

-  Luminaire housing
-  Optic

Test seal



* B = Bakery, V = Vegetable, C = Cheese,
M = Meat,
M = Meat, F = Fish

Technical details as well as weight specifications and measurements have been prepared with care. Errors excepted. All dimensions in mm · LED service life data: L80/B10 at ambient temperature (ta) 25°C. Rated lamp service life 50,000h. Luminous flux and efficiency specifications are subject to a tolerance of +/- 10%. Min CRI Ra: >80 / >90 · Product images are used as an example and may differ from the original · We reserve the right to make changes, insofar as they serve progress. Oktalite Lichttechnik GmbH · Mathias-Brüggen-Str. 73 · 50829 Cologne · T +49 221 59767-0 · F +49 221 59767-40 · mail@oktalite.com · www.oktalite.com · 2019-06-25

**B.LEE MINI****oktalite**

| Lumen category | Light colour | CRI R _a | system luminous flux* | System performance | Order number | | |
|----------------|-------------------------|--------------------|-----------------------|--------------------|--------------|----------|----------|
| | | | | | white | silver | black |
| 3000 lm | 2700 K | 82 | 2770 lm | 24 W | 10161947 | 10161948 | 10161949 |
| 3000 lm | 3000 K | 85 | 2985 lm | 24 W | 10161950 | 10161951 | 10161952 |
| 3000 lm | 3100 K Best Colour | 95 | 2985 lm | 32 W | 10161962 | 10161963 | 10161964 |
| 3000 lm | 3100 K Efficient Colour | 85 | 2900 lm | 24 W | 10161953 | 10161954 | 10161955 |
| 3000 lm | 3500 K | 85 | 3020 lm | 24 W | 10161956 | 10161957 | 10161958 |
| 3000 lm | 4000 K | 85 | 3085 lm | 24 W | 10161959 | 10161960 | 10161961 |
| 4000 lm | 2700 K | 82 | 3500 lm | 32 W | 10161968 | 10161969 | 10161970 |
| 4000 lm | 3000 K | 85 | 3765 lm | 32 W | 10161974 | 10161975 | 10161976 |
| 4000 lm | 3100 K Best Colour | 95 | 3640 lm | 42 W | 10163625 | 10163626 | 10163627 |
| 4000 lm | 3100 K Efficient Colour | 85 | 3665 lm | 32 W | 10161980 | 10161981 | 10161982 |
| 4000 lm | 3500 K | 85 | 3815 lm | 32 W | 10161986 | 10161987 | 10161988 |
| 4000 lm | 4000 K | 85 | 3895 lm | 32 W | 10161992 | 10161993 | 10161994 |
| 1500 lm | M | - | 1555 lm | 24 W | 10161156 | 10161157 | 10161158 |
| 1500 lm | M+F | - | 1465 lm | 24 W | 10161165 | 10161166 | 10161167 |
| 2000 lm | B+V+C | - | 2025 lm | 20 W | 10161174 | 10161175 | 10161176 |
| 2000 lm | M | - | 1960 lm | 31 W | 10161159 | 10161160 | 10161161 |
| 2000 lm | M+F | - | 1850 lm | 31 W | 10161168 | 10161169 | 10161170 |
| 3000 lm | B+V+C | - | 2960 lm | 31 W | 10161177 | 10161178 | 10161179 |

* System luminous flux based on medium flood reflector in silver.

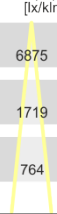
Technical details as well as weight specifications and measurements have been prepared with care. Errors excepted. All dimensions in mm · LED service life data: L80/B10 at ambient temperature (ta) 25°C. Rated lamp service life 50,000h. Luminous flux and efficiency specifications are subject to a tolerance of +/- 10%. Min CRI Ra: >80 / >90 · Product images are used as an example and may differ from the original · We reserve the right to make changes, insofar as they serve progress. Oktalite Lichttechnik GmbH · Mathias-Brüggen-Str. 73 · 50829 Cologne · T +49 221 59767-0 · F +49 221 59767-40 · mail@oktalite.com · www.oktalite.com · 2019-06-25

Optic B.LEE MINI - LED

| | |
|---------------------|----------------------------------|
| Version | interchangeable reflector system |
| Mounting | snap ring |
| Reflector colour | silver |
| Lighting technology | LED |

| Beam angle Spot | Type of reflector | Cover / filter | LOR | Order number | | |
|--------------------|-------------------|-------------------|-----|--------------|--------|-------|
| | | | | white | silver | black |

| B.Lee Mini - SP | | | |
|-----------------|-----------------|-------------------|-------------------|
| Höhe [m] | Kegel Ø [cm] | E(0°) [lx/klm] | E(C0) [lx/klm] |
| 1 | 25 | 6875 | 3397 |
| 2 | 49 | 1719 | 849 |
| 3 | 74 | 764 | 377 |



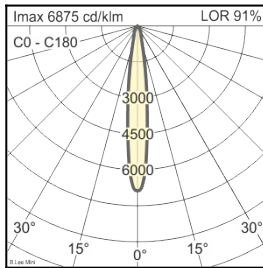
Segmented, MIRO-SILVER®

without

91 %

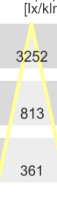
-

10116161 -



| Beam angle Medium Flood | Type of reflector | Cover / filter | LOR | Order number | | |
|----------------------------|-------------------|-------------------|-----|--------------|--------|-------|
| | | | | white | silver | black |

| B.Lee Mini - MF | | | |
|-----------------|-----------------|-------------------|-------------------|
| Höhe [m] | Kegel Ø [cm] | E(0°) [lx/klm] | E(C0) [lx/klm] |
| 1 | 44 | 3252 | 1520 |
| 2 | 89 | 813 | 380 |
| 3 | 133 | 361 | 169 |



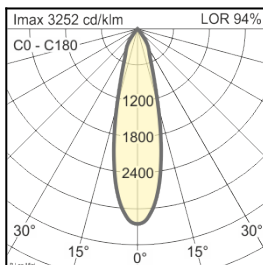
Segmented, MIRO-SILVER®

without

94 %

-

10116162 -



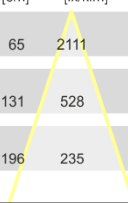
Technical details as well as weight specifications and measurements have been prepared with care. Errors excepted. All dimensions in mm · LED service life data: L80/B10 at ambient temperature (ta) 25°C. Rated lamp service life 50,000h. Luminous flux and efficiency specifications are subject to a tolerance of +/- 10%. Min CRI Ra: >80 / >90 · Product images are used as an example and may differ from the original · We reserve the right to make changes, insofar as they serve progress. Oktalite Lichttechnik GmbH · Mathias-Brüggen-Str. 73 · 50829 Cologne · T +49 221 59767-0 · F +49 221 59767-40 · mail@oktalite.com · www.oktalite.com · 2019-06-25

Optic B.LEE MINI - LED

| | |
|---------------------|----------------------------------|
| Version | interchangeable reflector system |
| Mounting | snap ring |
| Reflector colour | silver |
| Lighting technology | LED |

| Beam angle Flood | Type of reflector | Cover / filter | LOR | Order number | | |
|---------------------|-------------------|-------------------|-----|--------------|--------|-------|
| | | | | white | silver | black |

| B.Lee Mini - FL | | | |
|-----------------|-------------|----------------|----------------|
| Höhe [m] | KegelØ [cm] | E(0°) [lx/klm] | E(C0) [lx/klm] |
| 1 | 65 | 2111 | 907 |
| 2 | 131 | 528 | 227 |
| 3 | 196 | 235 | 101 |



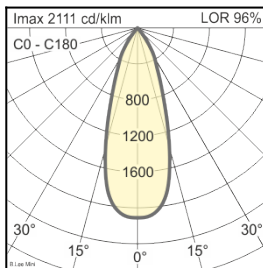
Segmented, MIRO-SILVER®

without

96 %

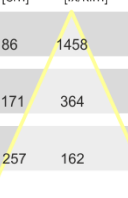
-

10116163 -



| Beam angle Wide Flood | Type of reflector | Cover / filter | LOR | Order number | | |
|--------------------------|-------------------|-------------------|-----|--------------|--------|-------|
| | | | | white | silver | black |

| B.Lee Mini - WFL | | | |
|------------------|-------------|----------------|----------------|
| Höhe [m] | KegelØ [cm] | E(0°) [lx/klm] | E(C0) [lx/klm] |
| 1 | 86 | 1458 | 574 |
| 2 | 171 | 364 | 143 |
| 3 | 257 | 162 | 64 |



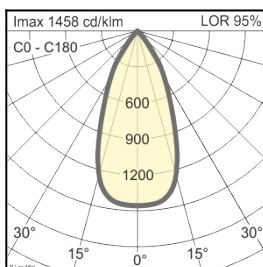
Segmented, MIRO-SILVER®

without

95 %

-

10147509 -



Technical details as well as weight specifications and measurements have been prepared with care. Errors excepted. All dimensions in mm · LED service life data: L80/B10 at ambient temperature (ta) 25°C. Rated lamp service life 50,000h. Luminous flux and efficiency specifications are subject to a tolerance of +/- 10%. Min CRI Ra: >80 / >90 · Product images are used as an example and may differ from the original · We reserve the right to make changes, insofar as they serve progress. Oktalite Lichttechnik GmbH · Mathias-Brüggen-Str. 73 · 50829 Cologne · T +49 221 59767-0 · F +49 221 59767-40 · mail@oktalite.com · www.oktalite.com · 2019-06-25

Optic B.LEE MINI - LED

| | |
|---------------------|----------------------------------|
| Version | interchangeable reflector system |
| Mounting | snap ring |
| Reflector colour | silver |
| Lighting technology | LED |

| Beam angle | Type of reflector | Cover / filter | LOR | Order number | | |
|------------|-------------------|----------------|-----|--------------|--------|-------|
| | | | | white | silver | black |

| B.Lee Mini - VFL | | | |
|------------------|-------------|----------------|----------------|
| Höhe [m] | KegelØ [cm] | E(0°) [lx/klm] | E(C0) [lx/klm] |
| 1 | 113 | 1044 | 366 |
| 2 | 225 | 261 | 91 |
| 3 | 338 | 116 | 41 |

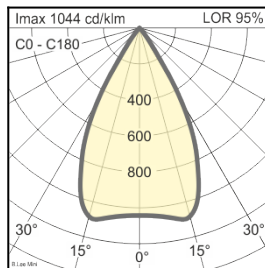
Segmented, MIRO-SILVER®

without

95 %

-

10147510 -



Technical details as well as weight specifications and measurements have been prepared with care. Errors excepted. All dimensions in mm · LED service life data: L80/B10 at ambient temperature (ta) 25°C. Rated lamp service life 50,000h. Luminous flux and efficiency specifications are subject to a tolerance of +/- 10%. Min CRI Ra: >80 / >90 · Product images are used as an example and may differ from the original · We reserve the right to make changes, insofar as they serve progress. Oktalite Lichttechnik GmbH · Mathias-Brüggen-Str. 73 · 50829 Cologne · T +49 221 59767-0 · F +49 221 59767-40 · mail@oktalite.com · www.oktalite.com · 2019-06-25