



QUAD

TRACK MOUNTED LUMINAIRES

Innovation in all areas: the use of a translucent ceramic as both a heat sink and design element and the light-bundling collimator technology make possible the extremely flat QUAD design. Lens disks can be used to set the ideal beam angle - quickly and easily.



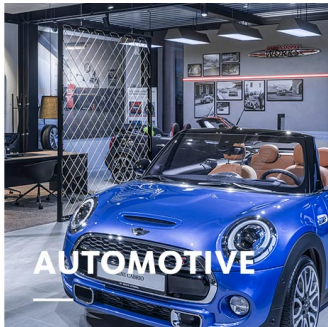
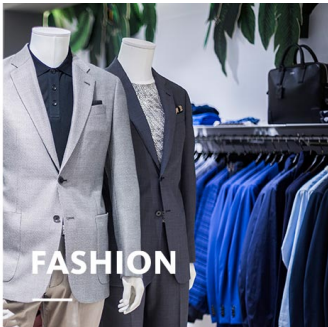
Flat design
Overall height only 4 cm, driver integrated



Targeted light
Collimators for light concentration, lenticular lenses for determination of the beam angle




Adaptable colours
Ring available in the standard colours black, white and silver, all other RAL colours on request



QUAD

oktalite

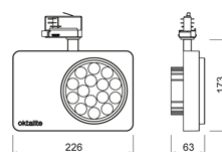
www.oktalite.com/quad-t

Type of luminaire	Track mounted luminaires
Application areas	Accent lighting
Pan/tilt range	355° turning range, 90° swivel range
Mounting	3-circuit power track adapter, not suitable for vertical mounting
Lighting technology	LED ^{IQ}
Lumen category	3600 lm
Light colour White	3000 K, 3500 K
Cooling	passive
Supply unit	DALI driver integrated
Luminaire colour	RAL 9005 matte jet black RAL 9006 matte white aluminium RAL 9010 matte pure white Special colours on request
Surface	smooth
Nominal voltage	220 - 240 V, 50/60Hz
Weight	Approx. 1.6 kg
Components	 Luminaire housing

Test seal



LED^{IQ}



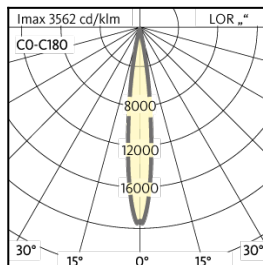
Technical details as well as weight specifications and measurements have been prepared with care. Errors excepted. All dimensions in mm · LED service life data: L80/B10 at ambient temperature (ta) 25°C. Rated lamp service life 50,000h. Luminous flux and efficiency specifications are subject to a tolerance of +/- 10%. Min CRI Ra: >80 / >90 · Product images are used as an example and may differ from the original · We reserve the right to make changes, insofar as they serve progress. Oktalite Lichttechnik GmbH · Mathias-Brüggen-Str. 73 · 50829 Cologne · T +49 221 59767-0 · F +49 221 59767-40 · mail@oktalite.com · www.oktalite.com · 2019-06-25

**QUAD****oktalite**

Optikfarbe	Beam angle	Light colour	CRI R _a	system luminous flux	System performance	Order number		
						white	silver	black
matte jet black	12°	3000 K	> 80	3200 lm	47 W	10136079	10136077	10136053
matte jet black	24°	3000 K	> 80	3200 lm	47 W	10136088	10136086	10136044
matte jet black	12°	3500 K	> 80	3200 lm	47 W	10136082	10136080	10136054
matte jet black	24°	3500 K	> 80	3200 lm	47 W	10136091	10136089	10136045
matte white aluminium	12°	3000 K	> 80	3200 lm	47 W	10136061	10136056	10136078
matte white aluminium	24°	3000 K	> 80	3200 lm	47 W	10136070	10136047	10136087
matte white aluminium	12°	3500 K	> 80	3200 lm	47 W	10136064	10136057	10136081
matte white aluminium	24°	3500 K	> 80	3200 lm	47 W	10136073	10136048	10136090
matte pure white	12°	3000 K	> 80	3200 lm	47 W	10136050	10136059	10136060
matte pure white	24°	3000 K	> 80	3200 lm	47 W	10136041	10136068	10136069
matte pure white	12°	3500 K	> 80	3200 lm	47 W	10136051	10136062	10136063
matte pure white	24°	3500 K	> 80	3200 lm	47 W	10136042	10136071	10136072

Beam angle	Reflector colour	LOR
12°	silver	%

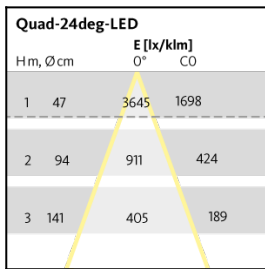
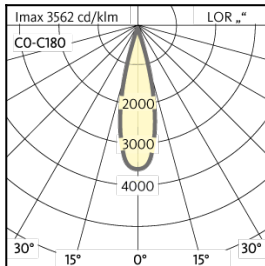
Quad-12deg-LED			
Hm, Ø cm		E [lx/klm]	
		0°	CO
1 14		19880	10039
2 35		4970	2510
3 52		2209	1115



Technical details as well as weight specifications and measurements have been prepared with care. Errors excepted. All dimensions in mm · LED service life data: L80/B10 at ambient temperature (ta) 25°C. Rated lamp service life 50,000h. Luminous flux and efficiency specifications are subject to a tolerance of +/- 10%. Min CRI Ra: >80 / >90 · Product images are used as an example and may differ from the original · We reserve the right to make changes, insofar as they serve progress. Oktalite Lichttechnik GmbH · Mathias-Brüggen-Str. 73 · 50829 Cologne · T +49 221 59767-0 · F +49 221 59767-40 · mail@oktalite.com · www.oktalite.com · 2019-06-25

	Beam angle	Reflector colour	LOR
--	------------	------------------	-----

Quad-24deg-LED			
Hm, Ø cm		E [lx/klm]	
		0°	CO
1	47	3645	1698
2	94	911	424
3	141	405	189

Technical details as well as weight specifications and measurements have been prepared with care. Errors excepted. All dimensions in mm · LED service life data: L80/B10 at ambient temperature (ta) 25°C. Rated lamp service life 50,000h. Luminous flux and efficiency specifications are subject to a tolerance of +/- 10%. Min CRI Ra: >80 / >90 · Product images are used as an example and may differ from the original · We reserve the right to make changes, insofar as they serve progress. Oktalite Lichttechnik GmbH · Mathias-Brüggen-Str. 73 · 50829 Cologne · T +49 221 59767-0 · F +49 221 59767-40 · mail@oktalite.com · www.oktalite.com · 2019-06-25