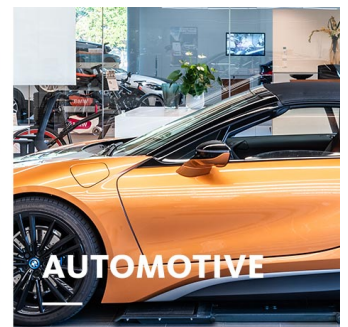
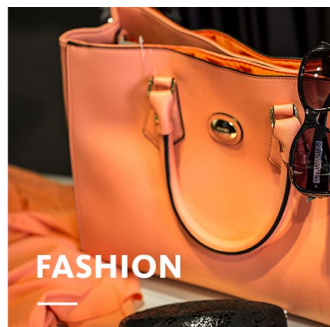




NIMBUS VARIO PLUS

RECESSED LUMINAIRES

High luminous flux with homogeneous light distribution and light incidence flush with the ceiling: NIMBUS VARIO PLUS efficiently illuminates the target surface. This wallwasher can be flexibly adjusted to match the individual ceiling height and merchandise presentation.

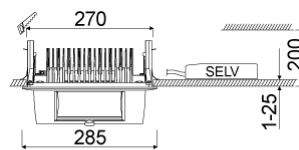




NIMBUS VARIO PLUS

oktalite

www.oktalite.com/nimbus-vario-plus-r

Type of luminaire	Recessed luminaires
Application areas	Wide-area merchandise illumination
Pan/tilt range	9 lockable levels, can be swivelled to 45°
Mounting	spring mounting
Ceiling thickness	1 - 25 mm
Lighting technology	LED
Lumen category	1500 lm - 4000 lm
Light colour White	2700 K, 3000 K, 3000 K - Efficient White, 3000 K - Brilliant Colour, 3500 K, 4000 K
Light colour Food*	B+V+C, M, M+F
Cooling	passive
Supply unit	Driver separate
Luminaire colour	RAL 9005 jet black RAL 9006 white aluminium RAL 9016 traffic white Special colours on request
Surface	structure powder-coated
Nominal voltage	220 - 240 V, 50/60Hz
Lighting controls	on request
Weight	Approx. 1.8 kg
Components	



-  Luminaire housing
-  Supply unit

Test seal



* B = Bakery, V = Vegetable, C = Cheese,
M = Meat,
M = Meat, F = Fish

Technical details as well as weight specifications and measurements have been prepared with care. Errors excepted. All dimensions in mm · LED service life data: L80/B10 at ambient temperature (ta) 25°C. Rated lamp service life 50,000h. Luminous flux and efficiency specifications are subject to a tolerance of +/- 10%. Min CRI Ra: >80 / >90 · Product images are used as an example and may differ from the original · We reserve the right to make changes, insofar as they serve progress. Oktalite Lichttechnik GmbH · Mathias-Brüggen-Str. 73 · 50829 Cologne · T +49 221 59767-0 · F +49 221 59767-40 · mail@oktalite.com · www.oktalite.com · 2019-06-16

**NIMBUS VARIO PLUS****oktalite**

Lumen category	Light colour	CRI [RA]	system luminous flux	System performance	Reflector colour	Order number		
						white	silver	black
2000 lm	3000 K - Efficient White	94	2140 lm	17 W	silver	10187868	10187869	10187870
2000 lm	3000 K - Brilliant Colour	96	2000 lm	21 W	silver	10187877	10187878	10187879
3000 lm	2700 K	81	2865 lm	21 W	silver	10187862	10187863	10187864
3000 lm	3000 K	83	2945 lm	21 W	silver	10187865	10187866	10187867
3000 lm	3000 K - Efficient White	94	2960 lm	25 W	silver	10187868	10187869	10187870
3000 lm	3000 K - Brilliant Colour	96	2955 lm	32 W	silver	10187877	10187878	10187879
3000 lm	3500 K	85	3005 lm	21 W	silver	10187871	10187872	10187873
3000 lm	4000 K	83	3100 lm	21 W	silver	10187874	10187875	10187876
4000 lm	2700 K	81	3745 lm	28 W	silver	10187862	10187863	10187864
4000 lm	3000 K	83	3855 lm	28 W	silver	10187865	10187866	10187867
4000 lm	3000 K - Efficient White	94	3905 lm	34 W	silver	10187868	10187869	10187870
4000 lm	3000 K - Brilliant Colour	96	3960 lm	46 W	silver	10187877	10187878	10187879
4000 lm	3500 K	85	3930 lm	28 W	silver	10187871	10187872	10187873
4000 lm	4000 K	83	4060 lm	28 W	silver	10187874	10187875	10187876
1500 lm	M	-	1600 lm	23 W	silver	10187853	10187854	10187855
1500 lm	M+F	-	1490 lm	23 W	silver	10187856	10187857	10187858
2000 lm	B+V+C	-	2040 lm	19 W	silver	10187859	10187860	10187861
2000 lm	M	-	2055 lm	30 W	silver	10187853	10187854	10187855
2000 lm	M+F	-	1915 lm	30 W	silver	10187856	10187857	10187858
3000 lm	B+V+C	-	3070 lm	30 W	silver	10187859	10187860	10187861
3000 lm	M	-	2860 lm	46 W	silver	10187853	10187854	10187855
3000 lm	M+F	-	2665 lm	46 W	silver	10187856	10187857	10187858
4000 lm	B+V+C	-	3845 lm	40 W	silver	10187859	10187860	10187861

* Efficient White: $R_9 = 75$, $R_f = 91$, $R_g = 102$ Brilliant Colour: $R_9 = 92$, $R_f = 93$, $R_g = 106$

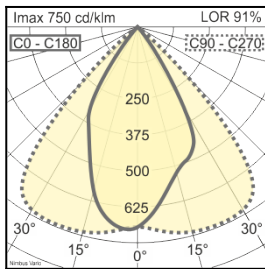
Technical details as well as weight specifications and measurements have been prepared with care. Errors excepted. All dimensions in mm · LED service life data: L80/B10 at ambient temperature (ta) 25°C. Rated lamp service life 50,000h. Luminous flux and efficiency specifications are subject to a tolerance of +/- 10%. Min CRI Ra: >80 / >90 · Product images are used as an example and may differ from the original · We reserve the right to make changes, insofar as they serve progress. Oktalite Lichttechnik GmbH · Mathias-Brüggen-Str. 73 · 50829 Cologne · T +49 221 59767-0 · F +49 221 59767-40 · mail@oktalite.com · www.oktalite.com · 2019-06-16

Beam angle	Reflector colour	LOR
------------	------------------	-----

Wall Washer

silver

91 %



Technical details as well as weight specifications and measurements have been prepared with care. Errors excepted. All dimensions in mm · LED service life data: L80/B10 at ambient temperature (t_a) 25°C. Rated lamp service life 50,000h. Luminous flux and efficiency specifications are subject to a tolerance of +/- 10%. Min CRI Ra: >80 / >90 · Product images are used as an example and may differ from the original · We reserve the right to make changes, insofar as they serve progress. Oktalite Lichttechnik GmbH · Mathias-Brüggen-Str. 73 · 50829 Cologne · T +49 221 59767-0 · F +49 221 59767-40 · mail@oktalite.com · www.oktalite.com · 2019-06-16



Supply unit - LED

Driver

oktalite

Connection type	Pre-wired plug-in connectivity
Mains connection	GST 18i3
Luminaire connection	RNV
Cable length secondary	400 mm
Nominal voltage	220 - 240 V, 50/60Hz
Schutzart_EN	IP20
Schutzklasse_EN	I, II
Lighting controls	on request
Lighting technology	LED

Lighting technology	Output	System performance	Order number
LED	450 mA	17 W	10185622
LED	500 mA	19 W	10185623
LED	550 mA	21 W	10185624
LED	600 mA	23 W	10185625
LED	650 mA	25 W	10185626
LED	750 mA	28 W	10185628
LED	800 mA	30 W	10185629
LED	850 mA	32 W	10185630
LED	900 mA	34 W	10185631
LED	1050 mA	40 W	10185633
LED	1200 mA	46 W	10185634

Technical details as well as weight specifications and measurements have been prepared with care. Errors excepted. All dimensions in mm · LED service life data: L80/B10 at ambient temperature (ta) 25°C. Rated lamp service life 50,000h. Luminous flux and efficiency specifications are subject to a tolerance of +/- 10%. Min CRI Ra: >80 / >90 · Product images are used as an example and may differ from the original · We reserve the right to make changes, insofar as they serve progress. Oktalite Lichttechnik GmbH · Mathias-Brüggen-Str. 73 · 50829 Cologne · T +49 221 59767-0 · F +49 221 59767-40 · mail@oktalite.com · www.oktalite.com · 2019-06-16