



# MUCH MOON

SUSPENDED LUMINAIRE

From special edition to standard: MUCH MOON has seized its place in the portfolio. The decorative suspended luminaire with a visible light surface offers creative design options for many applications thanks to different rod lengths and variable installation options. Be it Food, Fashion, Architectural, Office or Showroom – the controllable lighting installation MUCH MOON with high-level aesthetics creates representative and attention-grabbing areas in any room.



### Flexible suspension lengths

Variability from 60 cm to 2 m. On request even longer, up to a maximum of 4 meters



### Two luminaire sizes

Luminaire diameter of 165 mm and 240 mm for flexible architectural design



### Three installation types

From recessed and surface-mounted to 3-phase track



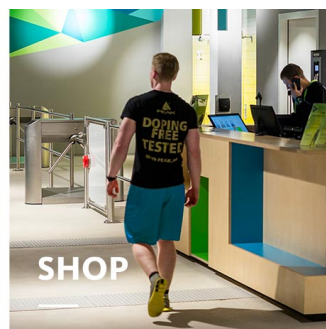
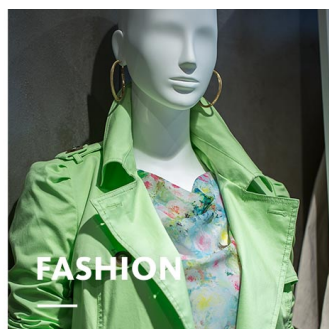
### Large LED selection

In light colours 3,000 K, 4,000 K or ACTIVE (2,700 - 6,000 K)



### Smart light

Ideal light management at all times with LED<sup>IQ</sup> DALI or LED<sup>IQ</sup> BLE





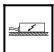
# MUCH MOON

# oktalite

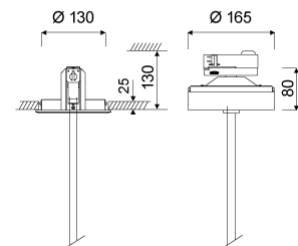
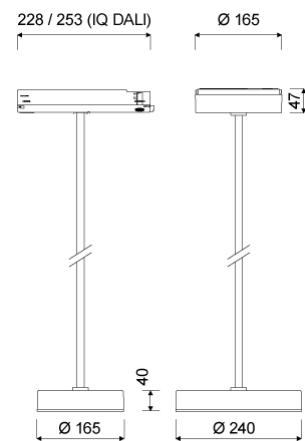
[www.oktalite.com/much-moon-p](http://www.oktalite.com/much-moon-p)

Type of luminaire	suspended luminaire
Application areas	base illumination
Pan/tilt range	fixed
Mounting	3P Power Track Typ Global DALI, not suitable for vertical mounting, recessed (Ø 130mm), Surface mounted
Ceiling thickness	1 - 25 mm
Lighting technology	LED <sup>IQ</sup> DALI
LED Luminous Flux Class	2000 lm - 3000 lm
Light colour White	3000 K, 4000 K, Active 2700-6000 K
Cooling	passive
Supply unit	DALI driver separate
Luminaire colour	RAL 9005 jet black RAL 9016 traffic white Special colours on request
Surface	structure powder-coated
Nominal voltage	220 - 240 V, 50/60Hz
Lighting controls	DALI DT6, DALI DT8 (Active)
Installation	Recommended for new installation.
Weight	2,0 kg / 2,8 kg

Components

-  Luminaire housing
-  Suspensions
-  Supply unit

Test seal



Technical details as well as weight specifications and measurements have been prepared with care. Errors excepted. All dimensions in mm · LED service life data: L80/B10 at ambient temperature (ta) 25°C. Rated lamp service life 50,000h. Luminous flux and efficiency specifications are subject to a tolerance of /- 10%. Min CRI Ra: >80 / >90· Product images are used as an example and may differ from the original · We reserve the right to make changes, insofar as they serve progress. The Single Lighting Regulation (SLR) documentation can be found in our download area. Oktalite Lichttechnik GmbH · Mathias-Brüggen-Str. 73 · 50829 Cologne · T 49 221 59767-0 · F 49 221 59767-40 · mail@oktalite.com · www.oktalite.com · 2022-11-29

**MUCH MOON****oktalite**

Size	LED Luminous Flux Class	Light colour	CRI R <sub>a</sub>	system luminous flux	System performance	Order number		
						white	silver	black
Ø 165 mm	2000 lm	3000 K	> 80	1685 lm	17 W	10236795		10236796
Ø 165 mm		4000 K	> 80	1770 lm	17 W	10236797		10236798
Ø 165 mm		Active 2700-6000 K	> 80	-	17 W	10236799		10236800
Ø 165 mm		2700 K	> 80	1635 lm				
Ø 165 mm		6000 K	> 80	1770 lm				
Ø 240 mm	3000 lm	3000 K	> 80	2545 lm	22 W	10236801		10236802
Ø 240 mm		4000 K	> 80	2675 lm	22 W	10236803		10236804
Ø 240 mm		Active 2700-6000 K	> 80	-	22 W	10236805		10236806
Ø 240 mm		2700 K	> 80	2470 lm				
Ø 240 mm		6000 K	> 80	2675 lm				

Technical details as well as weight specifications and measurements have been prepared with care. Errors excepted. All dimensions in mm · LED service life data: L80/B10 at ambient temperature (ta) 25°C. Rated lamp service life 50,000h. Luminous flux and efficiency specifications are subject to a tolerance of +/- 10%. Min CRI Ra: >80 / >90 · Product images are used as an example and may differ from the original · We reserve the right to make changes, insofar as they serve progress. The Single Lighting Regulation (SLR) documentation can be found in our download area. Oktalite Lichttechnik GmbH · Mathias-Brüggen-Str. 73 · 50829 Cologne · T 49 221 59767-0 · F 49 221 59767-40 · mail@oktalite.com · www.oktalite.com · 2022-11-29



Optic - LED<sup>IQ</sup> DALI

# Optic Much Moon - LED<sup>IQ</sup> DALI

# oktalite

Optic

Diffuser (opal)

Type

Optic integrated

## Beam angle

### Lambertian light distribution (Ø165mm)

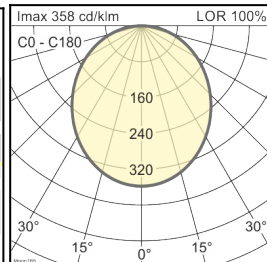
Cover

LOR

without

100 %

Much Moon 165			
Höhe [m]	KegelØ [m]	E(0°) [lx/klm]	E(C0) [lx/klm]
1	2,63	358	40
2	5,25	89	10
3	7,88	40	4



## Beam angle

### Lambertian light distribution (Ø240mm)

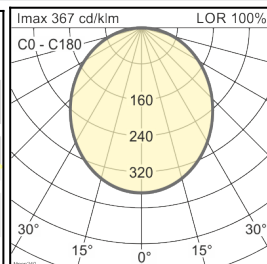
Cover

LOR

without

100 %

Much Moon 240			
Höhe [m]	KegelØ [m]	E(0°) [lx/klm]	E(C0) [lx/klm]
1	2,55	367	43
2	5,10	92	11
3	7,65	41	5



Technical details as well as weight specifications and measurements have been prepared with care. Errors excepted. All dimensions in mm · LED service life data: L80/B10 at ambient temperature (ta) 25°C. Rated lamp service life 50,000h. Luminous flux and efficiency specifications are subject to a tolerance of +/- 10%. Min CRI Ra: >80 / >90 · Product images are used as an example and may differ from the original · We reserve the right to make changes, insofar as they serve progress. The Single Lighting Regulation (SLR) documentation can be found in our download area. Oktalite Lichttechnik GmbH · Mathias-Brüggen-Str. 73 · 50829 Cologne · T 49 221 59767-0 · F 49 221 59767-40 · mail@oktalite.com · www.oktalite.com · 2022-11-29



Mounting - LED<sup>IQ</sup> DALI

## pendulum bar

# oktalite

Connection type

Pre-wired plug-in connectivity

Suspension length	Order number	
	white	black
600 mm	10236807	10236808
800 mm	10236809	10236810
1000mm	10236811	10236812
1200 mm	10236813	10236814
1400 mm	10236815	10236816
1600 mm	10236817	10236818
1800 mm	10236819	10236820
2000 mm	10236821	10236822

Technical details as well as weight specifications and measurements have been prepared with care. Errors excepted. All dimensions in mm · LED service life data: L80/B10 at ambient temperature (ta) 25°C. Rated lamp service life 50,000h. Luminous flux and efficiency specifications are subject to a tolerance of +/- 10%. Min CRI Ra: >80 / >90 · Product images are used as an example and may differ from the original · We reserve the right to make changes, insofar as they serve progress. The Single Lighting Regulation (SLR) documentation can be found in our download area. Oktalite Lichttechnik GmbH · Mathias-Brüggen-Str. 73 · 50829 Cologne · T 49 221 59767-0 · F 49 221 59767-40 · mail@oktalite.com · www.oktalite.com · 2022-11-29



## DALI driver

# oktalite

Version	Ceiling fixing incl. control gear
Connection type	Pre-wired plug-in connectivity
Luminaire connection	jack TRRS
Cable length secondary	400 mm
Nominal voltage	220 - 240 V, 50/60Hz
protection	IP20
protection class	I, II
Lighting controls	DALI DT6, DALI DT8 (Active)
Lighting technology	LED <sup>IQ</sup> DALI

Mounting	Mains connection	Output	System performance	max. luminaires B16	Order number	
					white	black
3P Power Track (l=253mm)	GAC616	600 mA	17 W	50	10236823	10236824
3P Power Track H17	GAC616 (Active)	600 mA	17 W	16	10236825	10236826
Surface mounted H17	1x3pol + 1x2pol	600 mA	17 W	50	10236831	10236832
Surface mounted H17	1x3pol + 1x2pol (Active)	600 mA	17 W	16	10236833	10236834
recessed (Ø 130mm)	GST18i3 + GST15i2	600 mA	17 W	50	10236839	10236840
recessed (Ø 130mm)	GST18i3 + GST15i2 (Active)	600 mA	17 W	16	10236841	10236842
3P Power Track (l=253mm)	GAC616	600 mA	22 W	50	10236823	10236824
3P Power Track H17	GAC616 (Active)	600 mA	22 W	16	10236825	10236826
Surface mounted H17	1x3pol + 1x2pol	600 mA	22 W	50	10236831	10236832
Surface mounted H17	1x3pol + 1x2pol (Active)	600 mA	22 W	16	10236833	10236834
recessed (Ø 130mm)	GST18i3 + GST15i2	600 mA	22 W	50	10236839	10236840
recessed (Ø 130mm)	GST18i3 + GST15i2 (Active)	600 mA	22 W	16	10236841	10236842

Technical details as well as weight specifications and measurements have been prepared with care. Errors excepted. All dimensions in mm · LED service life data: L80/B10 at ambient temperature (ta) 25°C. Rated lamp service life 50,000h. Luminous flux and efficiency specifications are subject to a tolerance of +/- 10%. Min CRI Ra: >80 / >90 · Product images are used as an example and may differ from the original · We reserve the right to make changes, insofar as they serve progress. The Single Lighting Regulation (SLR) documentation can be found in our download area. Oktalite Lichttechnik GmbH · Mathias-Brüggen-Str. 73 · 50829 Cologne · T 49 221 59767-0 · F 49 221 59767-40 · mail@oktalite.com · www.oktalite.com · 2022-11-29