



# TOKO PLUS

RECESSED LUMINAIRE

This LED downlight is an ideal partner for the sales floor. The simple design makes TOKO PLUS the favourite. The ceiling-recessed luminaire reliably supplies optionally homogeneous or accentuated light for all groups of goods. Equipped with our unique 3D faceted reflectors, the luminaire with four beam angles provides more possibilities for targeted illumination.



**Four beam angles thanks to 3D faceted reflector**

Homogeneous or accentuated illumination quite easy: Beam angled of 28°, 38°, 48° and 60°



**Strong luminous flux**

Up to 5000 lm ideal for rooms with high ceilings



**Well thought-out fastening**

Our own development for easy assembly



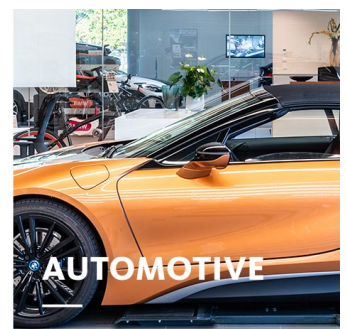
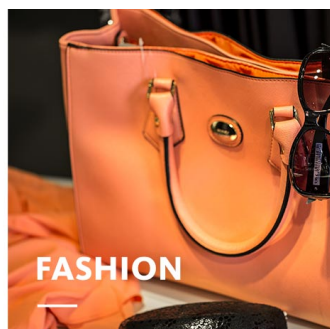
**Large LED selection**

Six white light colours up to 5000 lm



**Intelligent lighting**






LED<sup>IO</sup> for your smart lighting management

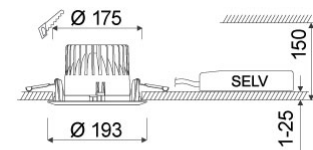


# TOKO PLUS

# oktalite

[www.oktalite.com/toko-plus-r](http://www.oktalite.com/toko-plus-r)

Type of luminaire	recessed luminaire
Application areas	base illumination
Pan/tilt range	fixed
Mounting	Okталite folding spring
Ceiling thickness	1 - 25 mm
Lighting technology	LED
LED Luminous Flux Class	3000 lm - 7000 lm
Light colour White	2700 K, 3000 K, 3000 K - Efficient White, 3000 K - Brilliant Colour, 3500 K, 4000 K
Cooling	passive
Supply unit	Driver separate
Luminaire colour	RAL 9005 jet black RAL 9006 white aluminium RAL 9016 traffic white Special colours on request
Surface	structure powder-coated
Nominal voltage	220 - 240 V, 50/60Hz
Lighting controls	on request
Weight	Approx. 1.2 kg
Components	 Luminaire housing  Supply unit
Test seal	  



Technical details as well as weight specifications and measurements have been prepared with care. Errors excepted. All dimensions in mm · LED service life data: L80/B10 at ambient temperature (ta) 25°C. Rated lamp service life 50,000h. Luminous flux and efficiency specifications are subject to a tolerance of +/- 10%. Min CRI Ra: >80 / >90· Product images are used as an example and may differ from the original · We reserve the right to make changes, insofar as they serve progress. The Single Lighting Regulation (SLR) documentation can be found in our download area. Okталite Lichttechnik GmbH · Mathias-Brüggen-Str. 73 · 50829 Cologne · T 49 221 59767-0 · F 49 221 59767-40 · mail@okталite.com · www.okталite.com · 2023-10-24



Beam angle

Medium Flood



LED Luminous Flux Class	Light colour	CRI R <sub>a</sub>	system luminous flux	System performance	Cover	Order number		
						white	silver	black
3000 lm	2700 K	81	2770 lm	21 W	clear	10217707	10217708	10217709
3000 lm	2700 K	81	2895 lm	21 W	without	10217635	10217636	10217637
3000 lm	3000 K	83	2845 lm	21 W	clear	10217710	10217711	10217712
3000 lm	3000 K	83	2980 lm	21 W	without	10217638	10217639	10217640
3000 lm	3000 K - Efficient White	94	2885 lm	25 W	clear	10217713	10217714	10217715
3000 lm	3000 K - Efficient White	94	3015 lm	25 W	without	10217641	10217642	10217643
3000 lm	3000 K - Brilliant Colour	97	2870 lm	32 W	clear	10217722	10217723	10217724
3000 lm	3000 K - Brilliant Colour	97	3000 lm	32 W	without	10217650	10217651	10217652
3000 lm	3500 K	84	2905 lm	21 W	clear	10217716	10217717	10217718
3000 lm	3500 K	84	3035 lm	21 W	without	10217644	10217645	10217646
3000 lm	4000 K	83	3000 lm	21 W	clear	10217719	10217720	10217721
3000 lm	4000 K	83	3135 lm	21 W	without	10217647	10217648	10217649
4000 lm	2700 K	81	3625 lm	28 W	clear	10217707	10217708	10217709
4000 lm	2700 K	81	3795 lm	28 W	without	10217635	10217636	10217637
4000 lm	3000 K	83	3730 lm	28 W	clear	10217710	10217711	10217712
4000 lm	3000 K	83	3900 lm	28 W	without	10217638	10217639	10217640
4000 lm	3000 K - Efficient White	94	3805 lm	34 W	clear	10217713	10217714	10217715
4000 lm	3000 K - Efficient White	94	3980 lm	34 W	without	10217641	10217642	10217643
4000 lm	3000 K - Brilliant Colour	97	3800 lm	46 W	clear	10217722	10217723	10217724
4000 lm	3000 K - Brilliant Colour	97	3975 lm	46 W	without	10217650	10217651	10217652
4000 lm	3500 K	84	3805 lm	28 W	clear	10217716	10217717	10217718
4000 lm	3500 K	84	3975 lm	28 W	without	10217644	10217645	10217646
4000 lm	4000 K	83	3930 lm	28 W	clear	10217719	10217720	10217721
4000 lm	4000 K	83	4110 lm	28 W	without	10217647	10217648	10217649
5000 lm	2700 K	81	4425 lm	36 W	clear	10217707	10217708	10217709
5000 lm	2700 K	81	4630 lm	36 W	without	10217635	10217636	10217637
5000 lm	3000 K	83	4550 lm	36 W	clear	10217710	10217711	10217712

Technical details as well as weight specifications and measurements have been prepared with care. Errors excepted. All dimensions in mm · LED service life data: L80/B10 at ambient temperature (ta) 25°C. Rated lamp service life 50,000h. Luminous flux and efficiency specifications are subject to a tolerance of +/- 10%. Min CRI Ra: >80 / >90· Product images are used as an example and may differ from the original · We reserve the right to make changes, insofar as they serve progress. The Single Lighting Regulation (SLR) documentation can be found in our download area. Oktalite Lichttechnik GmbH · Mathias-Brüggen-Str. 73 · 50829 Cologne · T 49 221 59767-0 · F 49 221 59767-40 · mail@oktalite.com · www.oktalite.com · 2023-10-24

5000 lm	3000 K	83	4760 lm	36 W	without	10217638	10217639	10217640
5000 lm	3000 K - Efficient White	94	4800 lm	46 W	clear	10217713	10217714	10217715
5000 lm	3000 K - Efficient White	94	5020 lm	46 W	without	10217641	10217642	10217643
5000 lm	3500 K	84	4640 lm	36 W	clear	10217716	10217717	10217718
5000 lm	3500 K	84	4855 lm	36 W	without	10217644	10217645	10217646
5000 lm	4000 K	83	4795 lm	36 W	clear	10217719	10217720	10217721
5000 lm	4000 K	83	5015 lm	36 W	without	10217647	10217648	10217649
7000 lm	3000 K	80	6845 lm	54 W	clear	10260593	10260594	10260595
7000 lm	3000 K	80	7160 lm	54 W	without	10260569	10260570	10260571
7000 lm	4000 K	80	7235 lm	54 W	clear	10260596	10260597	10260598
7000 lm	4000 K	80	7565 lm	54 W	without	10260572	10260573	10260574

Technical details as well as weight specifications and measurements have been prepared with care. Errors excepted. All dimensions in mm · LED service life data: L80/B10 at ambient temperature (ta) 25°C. Rated lamp service life 50,000h. Luminous flux and efficiency specifications are subject to a tolerance of +/- 10%. Min CRI Ra: >80 / >90 · Product images are used as an example and may differ from the original · We reserve the right to make changes, insofar as they serve progress. The Single Lighting Regulation (SLR) documentation can be found in our download area. Oktalite Lichttechnik GmbH · Mathias-Brüggen-Str. 73 · 50829 Cologne · T 49 221 59767-0 · F 49 221 59767-40 · mail@oktalite.com · www.oktalite.com · 2023-10-24



Beam angle

Flood



LED Luminous Flux Class	Light colour	CRI R <sub>a</sub>	system luminous flux	System performance	Cover	Order number		
						white	silver	black
3000 lm	2700 K	81	2770 lm	21 W	clear	10217725	10217726	10217727
3000 lm	2700 K	81	2895 lm	21 W	without	10217653	10217654	10217655
3000 lm	3000 K	83	2850 lm	21 W	clear	10217728	10217729	10217730
3000 lm	3000 K	83	2980 lm	21 W	without	10217656	10217657	10217658
3000 lm	3000 K - Efficient White	94	2885 lm	25 W	clear	10217731	10217732	10217733
3000 lm	3000 K - Efficient White	94	3015 lm	25 W	without	10217659	10217660	10217661
3000 lm	3000 K - Brilliant Colour	97	2870 lm	32 W	clear	10217740	10217741	10217742
3000 lm	3000 K - Brilliant Colour	97	3005 lm	32 W	without	10217668	10217669	10217670
3000 lm	3500 K	84	2905 lm	21 W	clear	10217734	10217735	10217736
3000 lm	3500 K	84	3035 lm	21 W	without	10217662	10217663	10217664
3000 lm	4000 K	83	3000 lm	21 W	clear	10217737	10217738	10217739
3000 lm	4000 K	83	3140 lm	21 W	without	10217665	10217666	10217667
4000 lm	2700 K	81	3630 lm	28 W	clear	10217725	10217726	10217727
4000 lm	2700 K	81	3795 lm	28 W	without	10217653	10217654	10217655
4000 lm	3000 K	83	3730 lm	28 W	clear	10217728	10217729	10217730
4000 lm	3000 K	83	3900 lm	28 W	without	10217656	10217657	10217658
4000 lm	3000 K - Efficient White	94	3805 lm	34 W	clear	10217731	10217732	10217733
4000 lm	3000 K - Efficient White	94	3980 lm	34 W	without	10217659	10217660	10217661
4000 lm	3000 K - Brilliant Colour	97	3800 lm	46 W	clear	10217740	10217741	10217742
4000 lm	3000 K - Brilliant Colour	97	3975 lm	46 W	without	10217668	10217669	10217670
4000 lm	3500 K	84	3805 lm	28 W	clear	10217734	10217735	10217736
4000 lm	3500 K	84	3980 lm	28 W	without	10217662	10217663	10217664
4000 lm	4000 K	83	3930 lm	28 W	clear	10217737	10217738	10217739
4000 lm	4000 K	83	4110 lm	28 W	without	10217665	10217666	10217667
5000 lm	2700 K	81	4425 lm	36 W	clear	10217725	10217726	10217727
5000 lm	2700 K	81	4630 lm	36 W	without	10217653	10217654	10217655
5000 lm	3000 K	83	4550 lm	36 W	clear	10217728	10217729	10217730

Technical details as well as weight specifications and measurements have been prepared with care. Errors excepted. All dimensions in mm · LED service life data: L80/B10 at ambient temperature (ta) 25°C. Rated lamp service life 50,000h. Luminous flux and efficiency specifications are subject to a tolerance of +/- 10%. Min CRI Ra: >80 / >90· Product images are used as an example and may differ from the original · We reserve the right to make changes, insofar as they serve progress. The Single Lighting Regulation (SLR) documentation can be found in our download area. Oktalite Lichttechnik GmbH · Mathias-Brüggen-Str. 73 · 50829 Cologne · T 49 221 59767-0 · F 49 221 59767-40 · mail@oktalite.com · www.oktalite.com · 2023-10-24

5000 lm	3000 K	83	4760 lm	36 W	without	10217656	10217657	10217658
5000 lm	3000 K - Efficient White	94	4800 lm	46 W	clear	10217731	10217732	10217733
5000 lm	3000 K - Efficient White	94	5020 lm	46 W	without	10217659	10217660	10217661
5000 lm	3500 K	84	4640 lm	36 W	clear	10217734	10217735	10217736
5000 lm	3500 K	84	4855 lm	36 W	without	10217662	10217663	10217664
5000 lm	4000 K	83	4795 lm	36 W	clear	10217737	10217738	10217739
5000 lm	4000 K	83	5015 lm	36 W	without	10217665	10217666	10217667
7000 lm	3000 K	80	6825 lm	54 W	clear	10260599	10260600	10260601
7000 lm	3000 K	80	7140 lm	54 W	without	10260575	10260576	10260577
7000 lm	4000 K	80	7210 lm	54 W	clear	10260602	10260603	10260604
7000 lm	4000 K	80	7540 lm	54 W	without	10260578	10260579	10260580

Technical details as well as weight specifications and measurements have been prepared with care. Errors excepted. All dimensions in mm · LED service life data: L80/B10 at ambient temperature (ta) 25°C. Rated lamp service life 50,000h. Luminous flux and efficiency specifications are subject to a tolerance of +/- 10%. Min CRI Ra: >80 / >90 · Product images are used as an example and may differ from the original · We reserve the right to make changes, insofar as they serve progress. The Single Lighting Regulation (SLR) documentation can be found in our download area. Oktalite Lichttechnik GmbH · Mathias-Brüggen-Str. 73 · 50829 Cologne · T 49 221 59767-0 · F 49 221 59767-40 · mail@oktalite.com · www.oktalite.com · 2023-10-24



Beam angle

Wide Flood



LED Luminous Flux Class	Light colour	CRI R <sub>a</sub>	system luminous flux	System performance	Cover	Order number		
						white	silver	black
3000 lm	2700 K	81	2770 lm	21 W	clear	10217743	10217744	10217745
3000 lm	2700 K	81	2895 lm	21 W	without	10217671	10217672	10217673
3000 lm	3000 K	83	2845 lm	21 W	clear	10217746	10217747	10217748
3000 lm	3000 K	83	2975 lm	21 W	without	10217674	10217675	10217676
3000 lm	3000 K - Efficient White	94	2880 lm	25 W	clear	10217749	10217750	10217751
3000 lm	3000 K - Efficient White	94	3015 lm	25 W	without	10217677	10217678	10217679
3000 lm	3000 K - Brilliant Colour	97	2870 lm	32 W	clear	10217758	10217759	10217760
3000 lm	3000 K - Brilliant Colour	97	3000 lm	32 W	without	10217686	10217687	10217688
3000 lm	3500 K	84	2905 lm	21 W	clear	10217752	10217753	10217754
3000 lm	3500 K	84	3035 lm	21 W	without	10217680	10217681	10217682
3000 lm	4000 K	83	3000 lm	21 W	clear	10217755	10217756	10217757
3000 lm	4000 K	83	3135 lm	21 W	without	10217683	10217684	10217685
4000 lm	2700 K	81	3625 lm	28 W	clear	10217743	10217744	10217745
4000 lm	2700 K	81	3790 lm	28 W	without	10217671	10217672	10217673
4000 lm	3000 K	83	3730 lm	28 W	clear	10217746	10217747	10217748
4000 lm	3000 K	83	3900 lm	28 W	without	10217674	10217675	10217676
4000 lm	3000 K - Efficient White	94	3805 lm	34 W	clear	10217749	10217750	10217751
4000 lm	3000 K - Efficient White	94	3980 lm	34 W	without	10217677	10217678	10217679
4000 lm	3000 K - Brilliant Colour	97	3800 lm	46 W	clear	10217758	10217759	10217760
4000 lm	3000 K - Brilliant Colour	97	3970 lm	46 W	without	10217686	10217687	10217688
4000 lm	3500 K	84	3800 lm	28 W	clear	10217752	10217753	10217754
4000 lm	3500 K	84	3975 lm	28 W	without	10217680	10217681	10217682
4000 lm	4000 K	83	3930 lm	28 W	clear	10217755	10217756	10217757
4000 lm	4000 K	83	4110 lm	28 W	without	10217683	10217684	10217685
5000 lm	2700 K	81	4425 lm	36 W	clear	10217743	10217744	10217745
5000 lm	2700 K	81	4625 lm	36 W	without	10217671	10217672	10217673
5000 lm	3000 K	83	4550 lm	36 W	clear	10217746	10217747	10217748

Technical details as well as weight specifications and measurements have been prepared with care. Errors excepted. All dimensions in mm · LED service life data: L80/B10 at ambient temperature (ta) 25°C. Rated lamp service life 50,000h. Luminous flux and efficiency specifications are subject to a tolerance of +/- 10%. Min CRI Ra: >80 / >90· Product images are used as an example and may differ from the original · We reserve the right to make changes, insofar as they serve progress. The Single Lighting Regulation (SLR) documentation can be found in our download area. Oktalite Lichttechnik GmbH · Mathias-Brüggen-Str. 73 · 50829 Cologne · T 49 221 59767-0 · F 49 221 59767-40 · mail@oktalite.com · www.oktalite.com · 2023-10-24

5000 lm	3000 K	83	4755 lm	36 W	without	10217674	10217675	10217676
5000 lm	3000 K - Efficient White	94	4800 lm	46 W	clear	10217749	10217750	10217751
5000 lm	3000 K - Efficient White	94	5020 lm	46 W	without	10217677	10217678	10217679
5000 lm	3500 K	84	4640 lm	36 W	clear	10217752	10217753	10217754
5000 lm	3500 K	84	4850 lm	36 W	without	10217680	10217681	10217682
5000 lm	4000 K	83	4790 lm	36 W	clear	10217755	10217756	10217757
5000 lm	4000 K	83	5010 lm	36 W	without	10217683	10217684	10217685
7000 lm	3000 K	80	6825 lm	54 W	clear	10260605	10260606	10260607
7000 lm	3000 K	80	7135 lm	54 W	without	10260581	10260582	10260583
7000 lm	4000 K	80	7210 lm	54 W	clear	10260608	10260609	10260610
7000 lm	4000 K	80	7540 lm	54 W	without	10260584	10260585	10260586

Technical details as well as weight specifications and measurements have been prepared with care. Errors excepted. All dimensions in mm · LED service life data: L80/B10 at ambient temperature (ta) 25°C. Rated lamp service life 50,000h. Luminous flux and efficiency specifications are subject to a tolerance of +/- 10%. Min CRI Ra: >80 / >90 · Product images are used as an example and may differ from the original · We reserve the right to make changes, insofar as they serve progress. The Single Lighting Regulation (SLR) documentation can be found in our download area. Oktalite Lichttechnik GmbH · Mathias-Brüggen-Str. 73 · 50829 Cologne · T 49 221 59767-0 · F 49 221 59767-40 · mail@oktalite.com · www.oktalite.com · 2023-10-24





Beam angle

Very Wide Flood



LED Luminous Flux Class	Light colour	CRI R <sub>a</sub>	system luminous flux	System performance	Cover	Order number		
						white	silver	black
3000 lm	2700 K	81	2770 lm	21 W	clear	10217761	10217762	10217763
3000 lm	2700 K	81	2895 lm	21 W	without	10217689	10217690	10217691
3000 lm	3000 K	83	2845 lm	21 W	clear	10217764	10217765	10217766
3000 lm	3000 K	83	2975 lm	21 W	without	10217692	10217693	10217694
3000 lm	3000 K - Efficient White	94	2885 lm	25 W	clear	10217767	10217768	10217769
3000 lm	3000 K - Efficient White	94	3015 lm	25 W	without	10217695	10217696	10217697
3000 lm	3000 K - Brilliant Colour	97	2870 lm	32 W	clear	10217776	10217777	10217778
3000 lm	3000 K - Brilliant Colour	97	3000 lm	32 W	without	10217704	10217705	10217706
3000 lm	3500 K	84	2905 lm	21 W	clear	10217770	10217771	10217772
3000 lm	3500 K	84	3035 lm	21 W	without	10217698	10217699	10217700
3000 lm	4000 K	83	3000 lm	21 W	clear	10217773	10217774	10217775
3000 lm	4000 K	83	3135 lm	21 W	without	10217701	10217702	10217703
4000 lm	2700 K	81	3625 lm	28 W	clear	10217761	10217762	10217763
4000 lm	2700 K	81	3795 lm	28 W	without	10217689	10217690	10217691
4000 lm	3000 K	83	3730 lm	28 W	clear	10217764	10217765	10217766
4000 lm	3000 K	83	3900 lm	28 W	without	10217692	10217693	10217694
4000 lm	3000 K - Efficient White	94	3805 lm	34 W	clear	10217767	10217768	10217769
4000 lm	3000 K - Efficient White	94	3980 lm	34 W	without	10217695	10217696	10217697
4000 lm	3000 K - Brilliant Colour	97	3800 lm	46 W	clear	10217776	10217777	10217778
4000 lm	3000 K - Brilliant Colour	97	3975 lm	46 W	without	10217704	10217705	10217706
4000 lm	3500 K	84	3805 lm	28 W	clear	10217770	10217771	10217772
4000 lm	3500 K	84	3975 lm	28 W	without	10217698	10217699	10217700
4000 lm	4000 K	83	3930 lm	28 W	clear	10217773	10217774	10217775
4000 lm	4000 K	83	4110 lm	28 W	without	10217701	10217702	10217703
5000 lm	2700 K	81	4425 lm	36 W	clear	10217761	10217762	10217763
5000 lm	2700 K	81	4625 lm	36 W	without	10217689	10217690	10217691
5000 lm	3000 K	83	4550 lm	36 W	clear	10217764	10217765	10217766

Technical details as well as weight specifications and measurements have been prepared with care. Errors excepted. All dimensions in mm · LED service life data: L80/B10 at ambient temperature (ta) 25°C. Rated lamp service life 50,000h. Luminous flux and efficiency specifications are subject to a tolerance of +/- 10%. Min CRI Ra: >80 / >90· Product images are used as an example and may differ from the original · We reserve the right to make changes, insofar as they serve progress. The Single Lighting Regulation (SLR) documentation can be found in our download area. Oktalite Lichttechnik GmbH · Mathias-Brüggen-Str. 73 · 50829 Cologne · T 49 221 59767-0 · F 49 221 59767-40 · mail@oktalite.com · www.oktalite.com · 2023-10-24

5000 lm	3000 K	83	4760 lm	36 W	without	10217692	10217693	10217694
5000 lm	3000 K - Efficient White	94	4800 lm	46 W	clear	10217767	10217768	10217769
5000 lm	3000 K - Efficient White	94	5020 lm	46 W	without	10217695	10217696	10217697
5000 lm	3500 K	84	4640 lm	36 W	clear	10217770	10217771	10217772
5000 lm	3500 K	84	4850 lm	36 W	without	10217698	10217699	10217700
5000 lm	4000 K	83	4795 lm	36 W	clear	10217773	10217774	10217775
5000 lm	4000 K	83	5015 lm	36 W	without	10217701	10217702	10217703
7000 lm	3000 K	80	6855 lm	54 W	clear	10260611	10260612	10260613
7000 lm	3000 K	80	7170 lm	54 W	without	10260587	10260588	10260589
7000 lm	4000 K	80	7240 lm	54 W	clear	10260614	10260615	10260616
7000 lm	4000 K	80	7575 lm	54 W	without	10260590	10260591	10260592



Efficient White:  $R_9 = 75$ ,  $R_i = 91$ ,  $R_g = 102$



Brilliant Colour:  $R_9 = 94$ ,  $R_i = 95$ ,  $R_g = 104$

Technical details as well as weight specifications and measurements have been prepared with care. Errors excepted. All dimensions in mm · LED service life data: L80/B10 at ambient temperature ( $t_a$ ) 25°C. Rated lamp service life 50,000h. Luminous flux and efficiency specifications are subject to a tolerance of  $\pm 10\%$ . Min CRI Ra:  $>80 / >90$  · Product images are used as an example and may differ from the original · We reserve the right to make changes, insofar as they serve progress. The Single Lighting Regulation (SLR) documentation can be found in our download area. Oktalite Lichttechnik GmbH · Mathias-Brüggen-Str. 73 · 50829 Cologne · T 49 221 59767-0 · F 49 221 59767-40 · mail@oktalite.com · www.oktalite.com · 2023-10-24

# Optic Toko Plus - LED

# oktalite

Optic 3D faceted reflectors  
 Type Optic integrated

**Beam angle**  
**Medium Flood**

Höhe [m]	KegelØ [cm]	E(0°) [lx/klm]	E(C0) [lx/klm]
1	52	2233	1014
2	103	558	253
3	155	248	113

Imax 2233 cd/klm LOR 91%  
 C0 - C180

Cover	LOR
without	91 %
clear	87 %

**Beam angle**  
**Flood**

Höhe [m]	KegelØ [cm]	E(0°) [lx/klm]	E(C0) [lx/klm]
1	70	1772	751
2	139	443	188
3	209	197	83

Imax 1772 cd/klm LOR 91%  
 C0 - C180

Cover	LOR
without	91 %
clear	87 %

**Beam angle**  
**Wide Flood**

Höhe [m]	KegelØ [cm]	E(0°) [lx/klm]	E(C0) [lx/klm]
1	98	1341	485
2	197	335	121
3	295	149	54

Imax 1341 cd/klm LOR 91%  
 C0 - C180

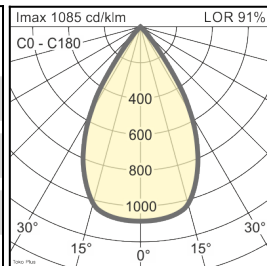
Cover	LOR
without	91 %
clear	87 %

Technical details as well as weight specifications and measurements have been prepared with care. Errors excepted. All dimensions in mm · LED service life data: L80/B10 at ambient temperature (ta) 25°C. Rated lamp service life 50,000h. Luminous flux and efficiency specifications are subject to a tolerance of +/- 10%. Min CRI Ra: >80 / >90 · Product images are used as an example and may differ from the original · We reserve the right to make changes, insofar as they serve progress. The Single Lighting Regulation (SLR) documentation can be found in our download area. Oktalite Lichttechnik GmbH · Mathias-Brüggen-Str. 73 · 50829 Cologne · T 49 221 59767-0 · F 49 221 59767-40 · mail@oktalite.com · www.oktalite.com · 2023-10-24

## Beam angle

### Very Wide Flood

Toko Plus - VFL			
Höhe [m]	KegelØ [cm]	E(0°) [lx/klm]	E(C0) [lx/klm]
1	116	1085	353
2	232	271	88
3	348	121	39



### Cover

### LOR

without

91 %

clear

87 %

Technical details as well as weight specifications and measurements have been prepared with care. Errors excepted. All dimensions in mm · LED service life data: L80/B10 at ambient temperature (ta) 25°C. Rated lamp service life 50,000h. Luminous flux and efficiency specifications are subject to a tolerance of +/- 10%. Min CRI Ra: >80 / >90 · Product images are used as an example and may differ from the original · We reserve the right to make changes, insofar as they serve progress. The Single Lighting Regulation (SLR) documentation can be found in our download area. Oktalite Lichttechnik GmbH · Mathias-Brüggen-Str. 73 · 50829 Cologne · T 49 221 59767-0 · F 49 221 59767-40 · mail@oktalite.com · www.oktalite.com · 2023-10-24



Supply unit - LED

## Driver

# oktalite

Version	Independent control gear
Connection type	Pre-wired plug-in connectivity
Mains connection	GST 18i3
Cable length secondary	400 mm
Nominal voltage	220 - 240 V, 50/60Hz
protection	IP20
protection class	I, II
Lighting controls	on request
Lighting technology	LED

Lighting technology	Luminaire connection	Output	System performance	max. luminaires B16	Order number
LED	RNV	550 mA	21 W	27	10264893
LED	RNV	650 mA	25 W	27	10264895
LED	RNV	750 mA	28 W	28	10264896
LED	RNV	850 mA	32 W	28	10264897
LED	RNV	900 mA	34 W	25	10211956
LED	RNV	950 mA	36 W	25	10211957
LED	RNV	1200 mA	46 W	30	10185634
LED	RNV	950 mA	54 W	30	10260617

Technical details as well as weight specifications and measurements have been prepared with care. Errors excepted. All dimensions in mm · LED service life data: L80/B10 at ambient temperature (ta) 25°C. Rated lamp service life 50,000h. Luminous flux and efficiency specifications are subject to a tolerance of +/- 10%. Min CRI Ra: >80 / >90 · Product images are used as an example and may differ from the original · We reserve the right to make changes, insofar as they serve progress. The Single Lighting Regulation (SLR) documentation can be found in our download area. Oktalite Lichttechnik GmbH · Mathias-Brüggen-Str. 73 · 50829 Cologne · T 49 221 59767-0 · F 49 221 59767-40 · mail@oktalite.com · www.oktalite.com · 2023-10-24