



TOKO

RECESSED LUMINAIRE

Particularly in the fashion area, an ingenious mixture of coherent basic lighting and well-balanced accentuation is required. Here TOKO is just right, since this LED downlight performs both tasks with virtuosity. It is small and unobtrusive in its design. Its fresh light illuminates the room homogeneously as far as the very last corner. Thanks to the 3D faceted reflector and four beam angles, accents can also be systematically set with TOKO.



Four beam angles thanks to 3D faceted reflector

Homogeneous or accentuated illumination is very easy: Beam angles of 28°, 38°, 48° und 60°



Small dimensions

Ceiling cut-out only 130 mm, recessing depth only 100 mm



Well thought-out attachment

Innovative mounting spring for ease of attachment



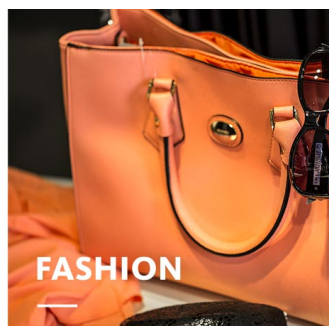
Large choice of LEDs

Six white light colours up to 4000 lm


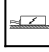
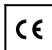




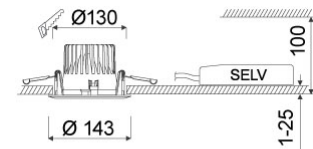
Intelligent lighting

LED^{IO} for your smart lighting management



www.oktalite.com/toko-r

Type of luminaire	recessed luminaire
Application areas	base illumination
Pan/tilt range	fixed
Mounting	Okталite folding spring
Ceiling thickness	1 - 25 mm
Lighting technology	LED IQ BLE
LED Luminous Flux Class	3000 lm - 4000 lm
Light colour White	2700 K, 3000 K, 3000 K - Efficient White, 3000 K - Brilliant Colour, 3500 K, 4000 K
Cooling	passive
Supply unit	BLE-Driver separate
Luminaire colour	RAL 9005 jet black RAL 9006 white aluminium RAL 9016 traffic white Special colours on request
Surface	structure powder-coated
Nominal voltage	220 - 240 V, 50/60Hz
Lighting controls	Bluetooth Low Energy
Installation	Recommended for modernization or new installation. In a BLE network up to 127 luminaires can be coupled. A stable Bluetooth connection depends on the particular local situation. In the case of this luminaire type it amounts to up to 25 m.
Weight	Approx. 0.6 kg
Components	 Luminaire housing  Supply unit
Test seal	  



Technical details as well as weight specifications and measurements have been prepared with care. Errors excepted. All dimensions in mm · LED service life data: L80/B10 at ambient temperature (ta) 25°C. Rated lamp service life 50,000h. Luminous flux and efficiency specifications are subject to a tolerance of +/- 10%. Min CRI Ra: >80 / >90· Product images are used as an example and may differ from the original · We reserve the right to make changes, insofar as they serve progress. The Single Lighting Regulation (SLR) documentation can be found in our download area. Okталite Lichttechnik GmbH · Mathias-Brüggen-Str. 73 · 50829 Cologne · T 49 221 59767-0 · F 49 221 59767-40 · mail@oktalite.com · www.oktalite.com · 2023-01-12



Beam angle

Medium Flood



LED Luminous Flux Class	Light colour	CRI R _a	system luminous flux	System performance	Cover	Order number		
						white	silver	black
3000 lm	3000 K - Brilliant Colour	97	2800 lm	32 W	clear	10222300	10222301	10222302
3000 lm	3000 K - Brilliant Colour	97	2930 lm	32 W	without	10222228	10222229	10222230
4000 lm	2700 K	81	3550 lm	28 W	clear	10222285	10222286	10222287
4000 lm	2700 K	81	3715 lm	28 W	without	10222213	10222214	10222215
4000 lm	3000 K	83	3650 lm	28 W	clear	10222288	10222289	10222290
4000 lm	3000 K	83	3820 lm	28 W	without	10222216	10222217	10222218
4000 lm	3000 K - Efficient White	94	3705 lm	34 W	clear	10222291	10222292	10222293
4000 lm	3000 K - Efficient White	94	3875 lm	34 W	without	10222219	10222220	10222221
4000 lm	3500 K	84	3725 lm	28 W	clear	10222294	10222295	10222296
4000 lm	3500 K	84	3895 lm	28 W	without	10222222	10222223	10222224
4000 lm	4000 K	83	3845 lm	28 W	clear	10222297	10222298	10222299
4000 lm	4000 K	83	4025 lm	28 W	without	10222225	10222226	10222227

Technical details as well as weight specifications and measurements have been prepared with care. Errors excepted. All dimensions in mm · LED service life data: L80/B10 at ambient temperature (ta) 25°C. Rated lamp service life 50,000h. Luminous flux and efficiency specifications are subject to a tolerance of +/- 10%. Min CRI Ra: >80 / >90 · Product images are used as an example and may differ from the original · We reserve the right to make changes, insofar as they serve progress. The Single Lighting Regulation (SLR) documentation can be found in our download area. Oktalite Lichttechnik GmbH · Mathias-Brüggen-Str. 73 · 50829 Cologne · T 49 221 59767-0 · F 49 221 59767-40 · mail@oktalite.com · www.oktalite.com · 2023-01-12



Beam angle

Flood



LED Luminous Flux Class	Light colour	CRI R _a	system luminous flux	System performance	Cover	Order number		
						white	silver	black
3000 lm	3000 K - Brilliant Colour	97	2805 lm	32 W	clear	10222318	10222319	10222320
3000 lm	3000 K - Brilliant Colour	97	2935 lm	32 W	without	10222246	10222247	10222248
4000 lm	2700 K	81	3560 lm	28 W	clear	10222303	10222304	10222305
4000 lm	2700 K	81	3720 lm	28 W	without	10222231	10222232	10222233
4000 lm	3000 K	83	3660 lm	28 W	clear	10222306	10222307	10222308
4000 lm	3000 K	83	3825 lm	28 W	without	10222234	10222235	10222236
4000 lm	3000 K - Efficient White	94	3715 lm	34 W	clear	10222309	10222310	10222311
4000 lm	3000 K - Efficient White	94	3885 lm	34 W	without	10222237	10222238	10222239
4000 lm	3500 K	84	3730 lm	28 W	clear	10222312	10222313	10222314
4000 lm	3500 K	84	3900 lm	28 W	without	10222240	10222241	10222242
4000 lm	4000 K	83	3855 lm	28 W	clear	10222315	10222316	10222317
4000 lm	4000 K	83	4030 lm	28 W	without	10222243	10222244	10222245

Technical details as well as weight specifications and measurements have been prepared with care. Errors excepted. All dimensions in mm · LED service life data: L80/B10 at ambient temperature (ta) 25°C. Rated lamp service life 50,000h. Luminous flux and efficiency specifications are subject to a tolerance of +/- 10%. Min CRI Ra: >80 / >90 · Product images are used as an example and may differ from the original · We reserve the right to make changes, insofar as they serve progress. The Single Lighting Regulation (SLR) documentation can be found in our download area. Oktalite Lichttechnik GmbH · Mathias-Brüggen-Str. 73 · 50829 Cologne · T 49 221 59767-0 · F 49 221 59767-40 · mail@oktalite.com · www.oktalite.com · 2023-01-12



Beam angle

Wide Flood



LED Luminous Flux Class	Light colour	CRI R _a	system luminous flux	System performance	Cover	Order number		
						white	silver	black
3000 lm	3000 K - Brilliant Colour	97	2805 lm	32 W	clear	10222336	10222337	10222338
3000 lm	3000 K - Brilliant Colour	97	2935 lm	32 W	without	10222264	10222265	10222266
3000 lm	3000 K - Brilliant Colour	97	2935 lm	32 W	clear	10222336	10222337	10222338
4000 lm	2700 K	81	3555 lm	28 W	clear	10222321	10222322	10222323
4000 lm	2700 K	81	3720 lm	28 W	without	10222249	10222250	10222251
4000 lm	3000 K	83	3655 lm	28 W	clear	10222324	10222325	10222326
4000 lm	3000 K	83	3825 lm	28 W	without	10222252	10222253	10222254
4000 lm	3000 K - Efficient White	94	3710 lm	34 W	clear	10222327	10222328	10222329
4000 lm	3000 K - Efficient White	94	3880 lm	34 W	without	10222255	10222256	10222257
4000 lm	3500 K	84	3730 lm	28 W	clear	10222330	10222331	10222332
4000 lm	3500 K	84	3900 lm	28 W	without	10222258	10222259	10222260
4000 lm	3500 K	84	3900 lm	28 W	clear	10222330	10222331	10222332
4000 lm	4000 K	83	3850 lm	28 W	clear	10222333	10222334	10222335
4000 lm	4000 K	83	4030 lm	28 W	without	10222261	10222262	10222263
4000 lm	4000 K	83	4030 lm	28 W	clear	10222333	10222334	10222335

Technical details as well as weight specifications and measurements have been prepared with care. Errors excepted. All dimensions in mm · LED service life data: L80/B10 at ambient temperature (ta) 25°C. Rated lamp service life 50,000h. Luminous flux and efficiency specifications are subject to a tolerance of +/- 10%. Min CRI Ra: >80 / >90 · Product images are used as an example and may differ from the original · We reserve the right to make changes, insofar as they serve progress. The Single Lighting Regulation (SLR) documentation can be found in our download area. Oktalite Lichttechnik GmbH · Mathias-Brüggen-Str. 73 · 50829 Cologne · T 49 221 59767-0 · F 49 221 59767-40 · mail@oktalite.com · www.oktalite.com · 2023-01-12



Beam angle

Very Wide Flood



LED Luminous Flux Class	Light colour	CRI R _a	system luminous flux	System performance	Cover	Order number		
						white	silver	black
3000 lm	3000 K - Brilliant Colour	97	2800 lm	32 W	clear	10222354	10222355	10222356
3000 lm	3000 K - Brilliant Colour	97	2925 lm	32 W	without	10222282	10222283	10222284
3000 lm	3000 K - Brilliant Colour	97	2925 lm	32 W	clear	10222354	10222355	10222356
4000 lm	2700 K	81	3545 lm	28 W	clear	10222339	10222340	10222341
4000 lm	2700 K	81	3710 lm	28 W	without	10222267	10222268	10222269
4000 lm	2700 K	81	3710 lm	28 W	clear	10222339	10222340	10222341
4000 lm	3000 K	83	3645 lm	28 W	clear	10222342	10222343	10222344
4000 lm	3000 K	83	3815 lm	28 W	without	10222270	10222271	10222272
4000 lm	3000 K	83	3815 lm	28 W	clear	10222342	10222343	10222344
4000 lm	3000 K - Efficient White	94	3700 lm	34 W	clear	10222345	10222346	10222347
4000 lm	3000 K - Efficient White	94	3870 lm	34 W	without	10222273	10222274	10222275
4000 lm	3500 K	84	3720 lm	28 W	clear	10222348	10222349	10222350
4000 lm	3500 K	84	3890 lm	28 W	without	10222276	10222277	10222278
4000 lm	3500 K	84	3890 lm	28 W	clear	10222348	10222349	10222350
4000 lm	4000 K	83	3845 lm	28 W	clear	10222351	10222352	10222353
4000 lm	4000 K	83	4020 lm	28 W	without	10222279	10222280	10222281
4000 lm	4000 K	83	4020 lm	28 W	clear	10222351	10222352	10222353

Efficient White: R_s = 75, R_r = 91, R_g = 102Brilliant Colour: R_s = 94, R_r = 95, R_g = 104

Technical details as well as weight specifications and measurements have been prepared with care. Errors excepted. All dimensions in mm · LED service life data: L80/B10 at ambient temperature (ta) 25°C. Rated lamp service life 50,000h. Luminous flux and efficiency specifications are subject to a tolerance of +/- 10%. Min CRI Ra: >80 / >90 · Product images are used as an example and may differ from the original · We reserve the right to make changes, insofar as they serve progress. The Single Lighting Regulation (SLR) documentation can be found in our download area. Oktalite Lichttechnik GmbH · Mathias-Brüggen-Str. 73 · 50829 Cologne · T 49 221 59767-0 · F 49 221 59767-40 · mail@oktalite.com · www.oktalite.com · 2023-01-12

Optic 3D faceted reflectors
 Type Optic integrated

Beam angle
Medium Flood

Höhe [m]	KegelØ [cm]	E(0°) [lx/klm]	E(C0) [lx/klm]
1	53	2272	1034
2	106	568	259
3	159	252	115

Imax 2272 cd/klm LOR 91%
 C0 - C180

Cover	LOR
without	91 %
clear	87 %

Beam angle
Flood

Höhe [m]	KegelØ [cm]	E(0°) [lx/klm]	E(C0) [lx/klm]
1	73	1723	715
2	146	431	179
3	220	191	79

Imax 1723 cd/klm LOR 91%
 C0 - C180

Cover	LOR
without	91 %
clear	87 %

Beam angle
Wide Flood

Höhe [m]	KegelØ [cm]	E(0°) [lx/klm]	E(C0) [lx/klm]
1	93	1372	511
2	187	343	128
3	280	152	57

Imax 1372 cd/klm LOR 91%
 C0 - C180

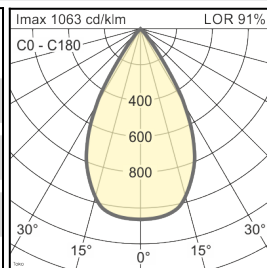
Cover	LOR
without	91 %
clear	87 %

Technical details as well as weight specifications and measurements have been prepared with care. Errors excepted. All dimensions in mm · LED service life data: L80/B10 at ambient temperature (ta) 25°C. Rated lamp service life 50,000h. Luminous flux and efficiency specifications are subject to a tolerance of +/- 10%. Min CRI Ra: >80 / >90· Product images are used as an example and may differ from the original · We reserve the right to make changes, insofar as they serve progress. The Single Lighting Regulation (SLR) documentation can be found in our download area. Oktalite Lichttechnik GmbH · Mathias-Brüggen-Str. 73 · 50829 Cologne · T 49 221 59767-0 · F 49 221 59767-40 · mail@oktalite.com · www.oktalite.com · 2023-01-12

Beam angle

Very Wide Flood

Toko - VFL			
Höhe [m]	KegelØ [cm]	E(0°) [lx/klm]	E(C0) [lx/klm]
1	118	1063	341
2	236	266	85
3	353	118	38



Cover

LOR

without	91 %
clear	87 %

Accessories

Order number

Energy self-sufficient 4-way push-button, white	10195262
4-way pushbutton coupler for recessed and surface-mounted boxes	10195263
Motion and brightness sensor with 2 m cable and Europlug	10195264
Motion and brightness sensor with integrated safety socket, white	10195265

Technical details as well as weight specifications and measurements have been prepared with care. Errors excepted. All dimensions in mm · LED service life data: L80/B10 at ambient temperature (ta) 25°C. Rated lamp service life 50,000h. Luminous flux and efficiency specifications are subject to a tolerance of +/- 10%. Min CRI Ra: >80 / >90 · Product images are used as an example and may differ from the original · We reserve the right to make changes, insofar as they serve progress. The Single Lighting Regulation (SLR) documentation can be found in our download area. Oktalite Lichttechnik GmbH · Mathias-Brüggen-Str. 73 · 50829 Cologne · T 49 221 59767-0 · F 49 221 59767-40 · mail@oktalite.com · www.oktalite.com · 2023-01-12



Supply unit - LED^{IQ} BLE

BLE-Driver

oktalite

Version	Independent control gear
Mains connection	GST 18i3
Cable length secondary	400 mm
Nominal voltage	220 - 240 V, 50/60Hz
Lighting controls	Bluetooth Low Energy
Lighting technology	LED ^{IQ} BLE

Lighting technology	Luminaire connection	Output	System performance	max. luminaires B16	Order number
LED IQ BLE	RNV	750 mA	28 W	50	10210600
LED IQ BLE	RNV	850 mA	32 W	50	10210601
LED IQ BLE	RNV	900 mA	34 W	50	10210602

Technical details as well as weight specifications and measurements have been prepared with care. Errors excepted. All dimensions in mm · LED service life data: L80/B10 at ambient temperature (ta) 25°C. Rated lamp service life 50,000h. Luminous flux and efficiency specifications are subject to a tolerance of +/- 10%. Min CRI Ra: >80 / >90 · Product images are used as an example and may differ from the original · We reserve the right to make changes, insofar as they serve progress. The Single Lighting Regulation (SLR) documentation can be found in our download area. Oktalite Lichttechnik GmbH · Mathias-Brüggen-Str. 73 · 50829 Cologne · T 49 221 59767-0 · F 49 221 59767-40 · mail@oktalite.com · www.oktalite.com · 2023-01-12