



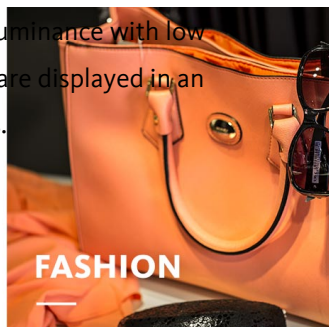
LENTY

RECESSED LUMINAIRE

The recessed version of the elegant lens spotlight also scores. Perfectly controlled illumination combined with a compact design and high flexibility make LENTY a popular highlight luminaire in the fashion sector and beyond. Shops such as opticians, jewellers and hearing-aid acousticians which frequently have low to medium ceiling heights also benefit from its high quality lens technology. The LENTY lens has been relocated approximately 20 mm to the rear, disappearing into the luminaire head away from the view of the observer – thus significantly minimising glare. The spotlight head with matt black front ring can be swivelled out by up to 50° and rotated by up to 355° for concentrated, vivid illumination of products and surfaces of all textures, compositions and sizes. The lens



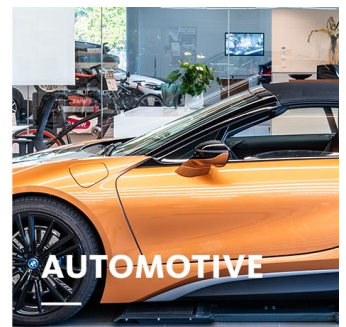
FOOD



FASHION



SHOP



AUTOMOTIVE



Lenses instead of reflector technology

More concentrated and directed light on the target surface



Providing highlights

High light intensity at 1,000, 1,500 or 2,000 lm; beam angles from spot and medium flood to flood



CRI > 90 for all light colours

Authentic illumination with Brilliant Food, Efficient White or Efficient Cool and more



Compatible with shop, office, gastronomy and architecture

Multi-functional in white or black, always with a black front ring



Intelligent light


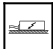
LED^{IQ} for your smart light management; control options including switchable, DALI, Bluetooth and BLE

LENTY

oktalite

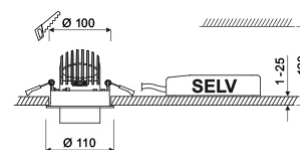
www.oktalite.com/lenty-r

Type of luminaire	recessed luminaire
Application areas	Accent lighting
Pan/tilt range	355° turning range, 50° swivel range
Mounting	Folding spring
Ceiling thickness	1 - 25 mm
Lighting technology	LED
LED Luminous Flux Class	1000 lm - 2000 lm
Light colour White	2700 K, 3000 K - Efficient White, 3100 K - Brilliant Colour, 3500 K, 4000 K - Efficient Cool
Light colour Food*	BF
Cooling	passive
Supply unit	Driver separate
Luminaire colour	RAL 9005 jet black RAL 9016 traffic white Special colours on request
Surface	structure powder-coated
Nominal voltage	220 - 240 V, 50/60Hz
Lighting controls	on request
Weight	Approx. 0.7 kg

Components	 Luminaire housing
	 Supply unit

Test seal	  
-----------	---

* BF = Brilliant Food



Technical details as well as weight specifications and measurements have been prepared with care. Errors excepted. All dimensions in mm · LED service life data: L80/B10 at ambient temperature (ta) 25°C. Rated lamp service life 50,000h. Luminous flux and efficiency specifications are subject to a tolerance of +/- 10%. Min CRI Ra: >80 / >90· Product images are used as an example and may differ from the original · We reserve the right to make changes, insofar as they serve progress. The Single Lighting Regulation (SLR) documentation can be found in our download area. Oktalite Lichttechnik GmbH · Mathias-Brüggen-Str. 73 · 50829 Cologne · T 49 221 59767-0 · F 49 221 59767-40 · mail@oktalite.com · www.oktalite.com · 2024-09-02



Luminaire housing - LED

LENTY

oktalite

Beam angle

Spot



LED Luminous Flux Class	Light colour	CRI R _a	system luminous flux	System performance	Cover	Order number		
						white	silver	black
1000 lm	3000 K - Efficient White	94	1200 lm	12 W	without	10239551		10239553
1000 lm	3500 K	92	1265 lm	12 W	without	10239533		10239535
1000 lm	4000 K - Efficient Cool	91	1240 lm	12 W	without	10239542		10239544
1500 lm	3100 K - Brilliant Colour	97	1545 lm	23 W	without	10239560		10239562
2000 lm	3000 K - Efficient White	94	1930 lm	23 W	without	10239551		10239553
2000 lm	3500 K	92	2040 lm	23 W	without	10239533		10239535
2000 lm	4000 K - Efficient Cool	91	1995 lm	23 W	without	10239542		10239544
1500 lm	BF	98	1600 lm	23 W	without	10239515		10239517

Technical details as well as weight specifications and measurements have been prepared with care. Errors excepted. All dimensions in mm · LED service life data: L80/B10 at ambient temperature (ta) 25°C. Rated lamp service life 50,000h. Luminous flux and efficiency specifications are subject to a tolerance of +/- 10%. Min CRI Ra: >80 / >90· Product images are used as an example and may differ from the original · We reserve the right to make changes, insofar as they serve progress. The Single Lighting Regulation (SLR) documentation can be found in our download area. Oktalite Lichttechnik GmbH · Mathias-Brüggen-Str. 73 · 50829 Cologne · T 49 221 59767-0 · F 49 221 59767-40 · mail@oktalite.com · www.oktalite.com · 2024-09-02



Luminaire housing - LED

LENTY

oktalite

Beam angle

Medium Flood



LED Luminous Flux Class	Light colour	CRI R _a	system luminous flux	System performance	Cover	Order number		
						white	silver	black
1000 lm	3000 K - Efficient White	94	1180 lm	12 W	without	10239554		10239556
1000 lm	3500 K	92	1245 lm	12 W	without	10239536		10239538
1000 lm	4000 K - Efficient Cool	91	1220 lm	12 W	without	10239545		10239547
1500 lm	3100 K - Brilliant Colour	97	1515 lm	23 W	without	10239563		10239565
2000 lm	3000 K - Efficient White	94	1895 lm	23 W	without	10239554		10239556
2000 lm	3500 K	92	2000 lm	23 W	without	10239536		10239538
2000 lm	4000 K - Efficient Cool	91	1960 lm	23 W	without	10239545		10239547
1500 lm	BF	98	1570 lm	23 W	without	10239518		10239520

Technical details as well as weight specifications and measurements have been prepared with care. Errors excepted. All dimensions in mm · LED service life data: L80/B10 at ambient temperature (ta) 25°C. Rated lamp service life 50,000h. Luminous flux and efficiency specifications are subject to a tolerance of +/- 10%. Min CRI Ra: >80 / >90· Product images are used as an example and may differ from the original · We reserve the right to make changes, insofar as they serve progress. The Single Lighting Regulation (SLR) documentation can be found in our download area. Oktalite Lichttechnik GmbH · Mathias-Brüggen-Str. 73 · 50829 Cologne · T 49 221 59767-0 · F 49 221 59767-40 · mail@oktalite.com · www.oktalite.com · 2024-09-02



Luminaire housing - LED

LENTY

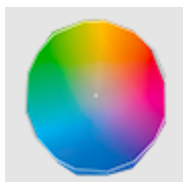
oktalite

Beam angle

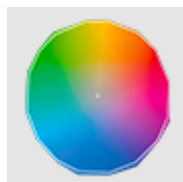
Flood



LED Luminous Flux Class	Light colour	CRI R _a	system luminous flux	System performance	Cover	Order number		
						white	silver	black
1000 lm	3000 K - Efficient White	94	1055 lm	12 W	without	10239557		10239559
1000 lm	3500 K	92	1115 lm	12 W	without	10239539		10239541
1000 lm	4000 K - Efficient Cool	91	1095 lm	12 W	without	10239548		10239550
1500 lm	3100 K - Brilliant Colour	97	1360 lm	23 W	without	10239566		10239568
2000 lm	3000 K - Efficient White	94	1700 lm	23 W	without	10239557		10239559
2000 lm	3500 K	92	1795 lm	23 W	without	10239539		10239541
2000 lm	4000 K - Efficient Cool	91	1755 lm	23 W	without	10239548		10239550
1500 lm	BF	98	1410 lm	23 W	without	10239521		10239523



Efficient White: R₉ = 75, R_f = 91, R_g = 102



Brilliant Colour: R₉ = 94, R_f = 95, R_g = 104

Technical details as well as weight specifications and measurements have been prepared with care. Errors excepted. All dimensions in mm · LED service life data: L80/B10 at ambient temperature (ta) 25°C. Rated lamp service life 50,000h. Luminous flux and efficiency specifications are subject to a tolerance of +/- 10%. Min CRI Ra: >80 / >90· Product images are used as an example and may differ from the original · We reserve the right to make changes, insofar as they serve progress. The Single Lighting Regulation (SLR) documentation can be found in our download area. Oktalite Lichttechnik GmbH · Mathias-Brüggen-Str. 73 · 50829 Cologne · T 49 221 59767-0 · F 49 221 59767-40 · mail@oktalite.com · www.oktalite.com · 2024-09-02

Optic Lenty - LED

oktalite

Optic

Lens optic

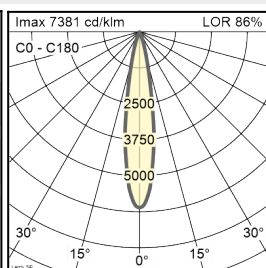
Type

Optic integrated

Beam angle

Spot

Lenty - SP			
Höhe [m]	Kegel Ø [cm]	E(0°) [lx/klm]	E(C0) [lx/klm]
1	32	7381	3575
2	64	1845	894
3	96	820	397



Cover

without

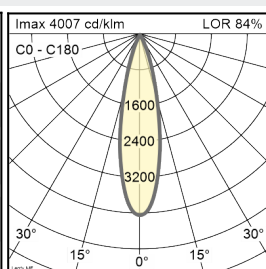
LOR

86 %

Beam angle

Medium Flood

Lenty - MF			
Höhe [m]	Kegel Ø [cm]	E(0°) [lx/klm]	E(C0) [lx/klm]
1	43	4007	1873
2	86	1002	468
3	130	445	208



Cover

without

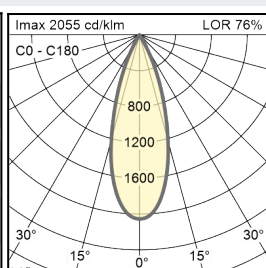
LOR

84 %

Beam angle

Flood

Lenty - FL			
Höhe [m]	Kegel Ø [cm]	E(0°) [lx/klm]	E(C0) [lx/klm]
1	61	2055	906
2	122	514	227
3	182	228	101



Cover

without

LOR

76 %

Technical details as well as weight specifications and measurements have been prepared with care. Errors excepted. All dimensions in mm · LED service life data: L80/B10 at ambient temperature (ta) 25°C. Rated lamp service life 50,000h. Luminous flux and efficiency specifications are subject to a tolerance of +/- 10%. Min CRI Ra: >80 / >90 · Product images are used as an example and may differ from the original · We reserve the right to make changes, insofar as they serve progress. The Single Lighting Regulation (SLR) documentation can be found in our download area. Oktalite Lichttechnik GmbH · Mathias-Brüggen-Str. 73 · 50829 Cologne · T 49 221 59767-0 · F 49 221 59767-40 · mail@oktalite.com · www.oktalite.com · 2024-09-02



Supply unit - **LED**

Driver

oktalite

Version	Independent control gear
Connection type	Pre-wired plug-in connectivity
Mains connection	GST 18i3
Cable length secondary	400 mm
Nominal voltage	220 - 240 V, 50/60Hz
protection	IP20
protection class	I, II
Lighting controls	on request
Lighting technology	LED

Lighting technology	Luminaire connection	Output	System performance	max. luminaires B16	Order number
LED	RNV	300 mA	12 W	50	10320108
LED	RNV	550 mA	23 W	27	10264893

Technical details as well as weight specifications and measurements have been prepared with care. Errors excepted. All dimensions in mm · LED service life data: L80/B10 at ambient temperature (ta) 25°C. Rated lamp service life 50,000h. Luminous flux and efficiency specifications are subject to a tolerance of +/- 10%. Min CRI Ra: >80 / >90· Product images are used as an example and may differ from the original · We reserve the right to make changes, insofar as they serve progress. The Single Lighting Regulation (SLR) documentation can be found in our download area. Oktalite Lichttechnik GmbH · Mathias-Brüggen-Str. 73 · 50829 Cologne · T 49 221 59767-0 · F 49 221 59767-40 · mail@oktalite.com · www.oktalite.com · 2024-09-02