

JUNO

SUSPENDED LUMINAIRE

With the addition of the suspended luminaire, the JUNO product family is a strong trio. The luminaire that received an award for the successful combination of design and directional lighting control supplies outstanding retail lighting in every design version. In addition, it can be used as an allrounder for the complete shop lighting: ambient lighting, assortment lighting, and aisle lighting with the TWIN variant, or accentuation of the counter and tables can also be achieved in a tailor-made manner with this luminaire. The hallmark of the JUNO, its visible and nevertheless dazzle-free light at the free-form lens, can be more directly experienced with the suspended luminaire.



Optimum light distribution

Accurate directional lighting control of free-form lens thanks to Oktalite reflector



Ideal applications

Suspended luminaire plus track-mounted spotlight – allrounder lighting for goods and architecture



New design language

Filigree, elegant appearance, and exciting long-distance effect thanks to the lens in droplet shape



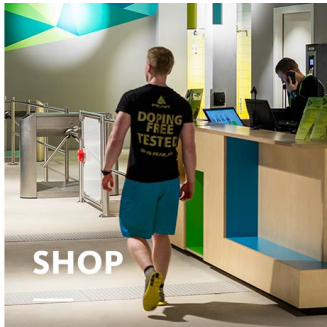
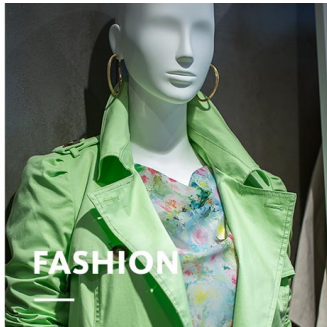
Easy alignment

Fine adjustment of the pendulum length on the ceiling fixture from 0 to 1.5 metres or 1.5 to 3 metres



Intelligent lighting

Simply digital: LED^{IQ} makes lighting control really easy

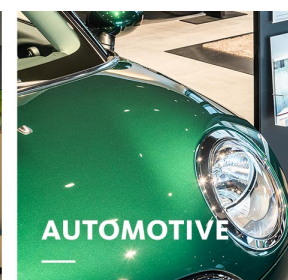
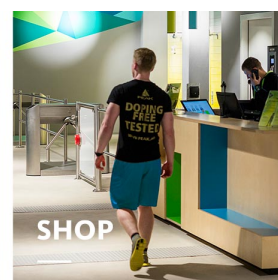
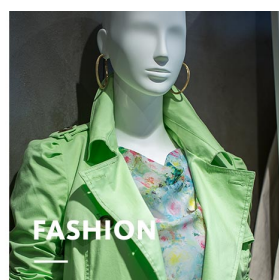
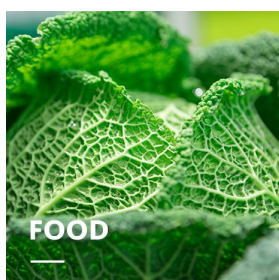
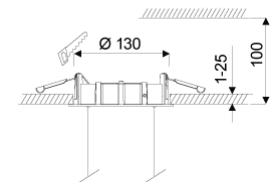
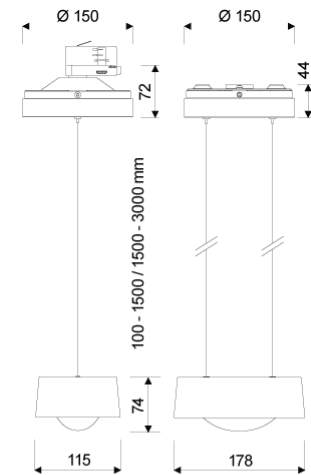


JUNO

oktalite

www.oktalite.com/juno-p

Type of luminaire	suspended luminaire
Application areas	Decorative lighting
Pan/tilt range	fixed
Mounting	3P Power Track Typ Global DALI, recessed (Ø 130mm), Surface mounted
Ceiling thickness	1 - 25 mm
Lighting technology	LED ^{IQ} DALI
LED Luminous Flux Class	3000 lm - 4000 lm
Light colour White	2700 K, 3000 K, 3000 K - Efficient White, 3000 K - Brilliant Colour, 3500 K, 4000 K
Light colour Food*	BF
Cooling	passive
Supply unit	DALI driver separate / integrated
Luminaire colour	RAL 9005 jet black RAL 9006 white aluminium RAL 9016 traffic white Special colours on request
Surface	structure powder-coated
Suspension length	1500mm, 3000mm
Nominal voltage	220 - 240 V, 50/60Hz
Lighting controls	DALI DT6
Installation	Recommended for new installation.
Weight	Approx. 2.2 kg



Components



Luminaire housing



Supply unit

Test seal



* BF = Brilliant Food

Technical details as well as weight specifications and measurements have been prepared with care. Errors excepted. All dimensions in mm · LED service life data: L80/B10 at ambient temperature (ta) 25°C. Rated lamp service life 50,000h. Luminous flux and efficiency specifications are subject to a tolerance of /- 10%. Min CRI Ra: >80 / >90· Product images are used as an example and may differ from the original · We reserve the right to make changes, insofar as they serve progress. The Single Lighting Regulation (SLR) documentation can be found in our download area. Oktalite Lichttechnik GmbH · Mathias-Brüggen-Str. 73 · 50829 Cologne · T 49 221 59767-0 · F 49 221 59767-40 · mail@oktalite.com · www.oktalite.com · 2023-11-23

Luminaire housing - LED^{IQ} DALI

JUNO

oktalite

Mounting
Supply unit3P Power Track H11
integrated

LED Luminous Flux Class	Light colour	CRI R _a	system luminous flux*	System performance	Suspension length	Order number		
						white	silver	black
3000 lm	3000 K - Brilliant Colour	> 95	2810 lm	34 W	1500mm	10232184	10232185	10232186
3000 lm	3000 K - Brilliant Colour	> 95	2810 lm	35 W	3000mm	10232187	10232188	10232189
4000 lm	2700 K	> 80	3620 lm	30 W	1500mm	10232166	10232167	10232168
4000 lm	2700 K	> 80	3620 lm	31 W	3000mm	10232169	10232170	10232171
4000 lm	3000 K	> 80	3720 lm	30 W	1500mm	10232172	10232173	10232174
4000 lm	3000 K	> 80	3720 lm	31 W	3000mm	10232175	10232176	10232177
4000 lm	3000 K - Efficient White	> 90	3785 lm	36 W	1500mm	10232178	10232179	10232180
4000 lm	3000 K - Efficient White	> 90	3785 lm	38 W	3000mm	10232181	10232182	10232183
4000 lm	3500 K	> 80	3795 lm	30 W	1500mm	10232190	10232191	10232192
4000 lm	3500 K	> 80	3795 lm	31 W	3000mm	10232193	10232194	10232195
4000 lm	4000 K	> 80	3920 lm	30 W	1500mm	10232196	10232197	10232198
4000 lm	4000 K	> 80	3920 lm	31 W	3000mm	10232199	10232200	10232201
4000 lm	BF	> 95	3480 lm	43 W	1500mm	10232202	10232203	10232204
4000 lm	BF	> 95	3480 lm	45 W	3000mm	10232205	10232206	10232207

Technical details as well as weight specifications and measurements have been prepared with care. Errors excepted. All dimensions in mm · LED service life data: L80/B10 at ambient temperature (ta) 25°C. Rated lamp service life 50,000h. Luminous flux and efficiency specifications are subject to a tolerance of +/- 10%. Min CRI Ra: >80 / >90· Product images are used as an example and may differ from the original · We reserve the right to make changes, insofar as they serve progress. The Single Lighting Regulation (SLR) documentation can be found in our download area. Oktalite Lichttechnik GmbH · Mathias-Brüggen-Str. 73 · 50829 Cologne · T 49 221 59767-0 · F 49 221 59767-40 · mail@oktalite.com · www.oktalite.com · 2023-11-23

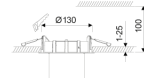


Luminaire housing - LED^{IQ} DALI

JUNO

oktalite

Mounting recessed H14 (Ø 130mm)
Supply unit separate



LED Luminous Flux Class	Light colour	CRI R _a	system luminous flux*	System performance	Suspension length	Order number		
						white	silver	black
3000 lm	3000 K - Brilliant Colour	> 95	2810 lm	34 W	1500mm	10235208	10235209	10235210
4000 lm	2700 K	> 80	3620 lm	30 W	1500mm	10232130	10232131	10232132
4000 lm	3000 K	> 80	3720 lm	30 W	1500mm	10232136	10232137	10232138
4000 lm	3000 K - Efficient White	> 90	3785 lm	36 W	1500mm	10232142	10232143	10232144
4000 lm	3500 K	> 80	3795 lm	30 W	1500mm	10232148	10232149	10232150
4000 lm	4000 K	> 80	3920 lm	30 W	1500mm	10232154	10232155	10232156
4000 lm	BF	> 95	3480 lm	43 W	1500mm	10232160	10232161	10232162

Technical details as well as weight specifications and measurements have been prepared with care. Errors excepted. All dimensions in mm · LED service life data: L80/B10 at ambient temperature (ta) 25°C. Rated lamp service life 50,000h. Luminous flux and efficiency specifications are subject to a tolerance of /- 10%. Min CRI Ra: >80 / >90· Product images are used as an example and may differ from the original · We reserve the right to make changes, insofar as they serve progress. The Single Lighting Regulation (SLR) documentation can be found in our download area. Oktalite Lichttechnik GmbH · Mathias-Brüggen-Str. 73 · 50829 Cologne · T 49 221 59767-0 · F 49 221 59767-40 · mail@oktalite.com · www.oktalite.com · 2023-11-23



JUNO

oktalite

Mounting
Supply unitSurface mounted H20
integrated

LED Luminous Flux Class	Light colour	CRI R _a	system luminous flux*	System performance	Suspension length	Order number		
						white	silver	black
3000 lm	3000 K - Brilliant Colour	> 95	2810 lm	34 W	1500mm	10232226	10232227	10232228
3000 lm	3000 K - Brilliant Colour	> 95	2810 lm	35 W	3000mm	10232229	10232230	10232231
4000 lm	2700 K	> 80	3620 lm	30 W	1500mm	10232208	10232209	10232210
4000 lm	2700 K	> 80	3620 lm	31 W	3000mm	10232211	10232212	10232213
4000 lm	3000 K	> 80	3720 lm	30 W	1500mm	10232214	10232215	10232216
4000 lm	3000 K	> 80	3720 lm	31 W	3000mm	10232217	10232218	10232219
4000 lm	3000 K - Efficient White	> 90	3785 lm	36 W	1500mm	10232220	10232221	10232222
4000 lm	3000 K - Efficient White	> 90	3785 lm	38 W	3000mm	10232223	10232224	10232225
4000 lm	3500 K	> 80	3795 lm	30 W	1500mm	10232232	10232233	10232234
4000 lm	3500 K	> 80	3795 lm	31 W	3000mm	10232235	10232236	10232237
4000 lm	4000 K	> 80	3920 lm	30 W	1500mm	10232238	10232239	10232240
4000 lm	4000 K	> 80	3920 lm	31 W	3000mm	10232241	10232242	10232243
4000 lm	BF	> 95	3480 lm	43 W	1500mm	10232244	10232245	10232246
4000 lm	BF	> 95	3480 lm	45 W	3000mm	10232247	10232248	10232249

Efficient White: R₉ = 75, R_f = 91, R_g = 102Brilliant Colour: R₉ = 94, R_f = 95, R_g = 104

Technical details as well as weight specifications and measurements have been prepared with care. Errors excepted. All dimensions in mm · LED service life data: L80/B10 at ambient temperature (ta) 25°C. Rated lamp service life 50,000h. Luminous flux and efficiency specifications are subject to a tolerance of +/- 10%. Min CRI Ra: >80 / >90 · Product images are used as an example and may differ from the original · We reserve the right to make changes, insofar as they serve progress. The Single Lighting Regulation (SLR) documentation can be found in our download area. Oktalite Lichttechnik GmbH · Mathias-Brüggen-Str. 73 · 50829 Cologne · T 49 221 59767-0 · F 49 221 59767-40 · mail@oktalite.com · www.oktalite.com · 2023-11-23



Optic Juno - LED ^{IQ} DALI

oktalite

Optic

Freeform lens

Type

Optic integrated

Beam angle

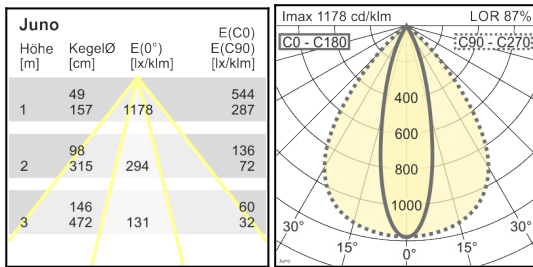
Oval light distribution

Cover

LOR

without

87 %



Technical details as well as weight specifications and measurements have been prepared with care. Errors excepted. All dimensions in mm · LED service life data: L80/B10 at ambient temperature (ta) 25°C. Rated lamp service life 50,000h. Luminous flux and efficiency specifications are subject to a tolerance of +/- 10%. Min CRI Ra: >80 / >90 · Product images are used as an example and may differ from the original · We reserve the right to make changes, insofar as they serve progress. The Single Lighting Regulation (SLR) documentation can be found in our download area. Oktalite Lichttechnik GmbH · Mathias-Brüggen-Str. 73 · 50829 Cologne · T 49 221 59767-0 · F 49 221 59767-40 · mail@oktalite.com · www.oktalite.com · 2023-11-23



Supply unit - LED^{IQ} DALI

DALI driver

oktalite

Version	Independent control gear
Connection type	Pre-wired plug-in connectivity
Mains connection	GST 18i3
Cable length secondary	400 mm
Nominal voltage	220 - 240 V, 50/60Hz
protection	IP20
protection class	I, II
Lighting controls	DALI DT6
Lighting technology	LED ^{IQ} DALI

Lighting technology	Luminaire connection	Output	System performance	max. luminaires B16	Order number
LED IQ DALI	RNV	750 mA	30 W	20	10239584
LED IQ DALI	RNV	850 mA	34 W	20	10239583
LED IQ DALI	RNV	900 mA	36 W	20	10185639
LED IQ DALI	RNV	1050 mA	43 W	20	10239582

Technical details as well as weight specifications and measurements have been prepared with care. Errors excepted. All dimensions in mm · LED service life data: L80/B10 at ambient temperature (ta) 25°C. Rated lamp service life 50,000h. Luminous flux and efficiency specifications are subject to a tolerance of +/- 10%. Min CRI Ra: >80 / >90 · Product images are used as an example and may differ from the original · We reserve the right to make changes, insofar as they serve progress. The Single Lighting Regulation (SLR) documentation can be found in our download area. Oktalite Lichttechnik GmbH · Mathias-Brüggen-Str. 73 · 50829 Cologne · T 49 221 59767-0 · F 49 221 59767-40 · mail@oktalite.com · www.oktalite.com · 2023-11-23